


INTERPRETATION / INTERPRETACIÓN

Windows | macOS

1. In your meeting/webinar controls, click **Interpretation** .
2. Click the language that you would like to hear.
3. (Optional) To hear the interpreted language only, click **Mute Original Audio**.

Notes:

- You must join the meeting audio through your computer audio/VoIP. You cannot listen to language interpretation if you use the [dial-in](#) or [call me](#) phone audio features.
- As a participant joining a language channel, you can broadcast back into the main audio channel if you unmute your audio and speak.

Android | iOS

1. In your meeting controls, tap the ellipses **⋮**.
2. Tap **Language Interpretation**.
3. Tap the language you want to hear.
4. (Optional) Tap the toggle to **Mute Original Audio**.
5. Click **Done**.

Notes:

- You cannot listen to language interpretation if you use the [dial-in](#) or [call me](#) phone audio features.
- As a participant joining a language channel, you can broadcast back into the main audio channel if you unmute your audio and speak.



Mayor Michelle Wu

SASAKI



City of Boston
Public Facilities

QUESTIONS? PLEASE HOLD THEM UNTIL THE END!

JOINING BY WEB (Computer, Tablet, etc):



Click to raise
your hand



Click to type
your questions



Microphone

Click to mute
or unmute



Video

Click to show
or hide your
video

JOINING BY PHONE (Dial): **301 715 8592** + use Meeting ID 986 4157 7181

Press *9 to raise your hand

Press *6 to unmute/mute yourself

¿PREGUNTAS? ¡POR FAVOR, GUARDENLOS HASTA EL FINAL!

FAVOR SELECCIONAR LA TRADUCCIÓN A ESPAÑOL CON EL
ICONO DE GLOBO (🌐) DE LA PARTE INFERIOR A LA DERECHA

Instrucciones para escuchar la interpretación en Español:
Seleccione un canal en zoom para escuchar. Si tiene computador,
busque el globo terráqueo/mundo y escoja Español.
Favor de poner en mudo su microfono durante la sesión.



Egleston Square Branch Library

Community Design Meeting #1
May 13, 2024



Mayor Michelle Wu

SASAKI



City of Boston
Public Facilities



CITY OF BOSTON

Public Facilities Team

DION IRISH *Chief of Operations*

KERRIE GRIFFIN *Director*

CARLETON JONES *Deputy Director*

ELLEN MCDONOUGH *Chief of Staff*

SUSAN RICE *Assistant Director*

TARA DARDEN *Project Manager*

AGENDA

1. Introductions
2. 2021 Programming Study
3. Design Phase Overview
4. Initial Design Work
 - Site and Neighborhood Analysis
 - Sustainability
 - Library Experience
 - Review of Program Spaces
5. Feedback & Questions
 - Please hold your questions and comments until the end



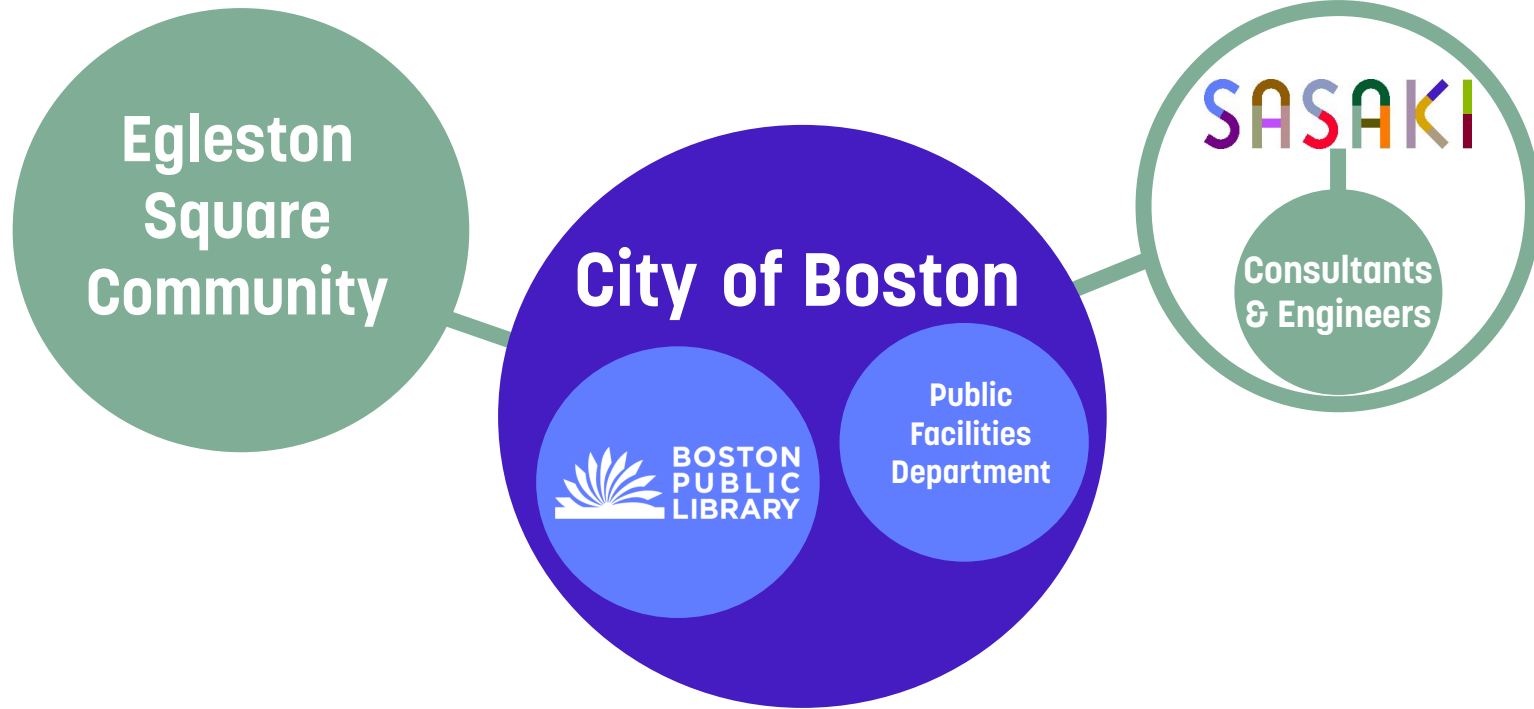
Mayor Michelle Wu

SASAKI



City of Boston
Public Facilities

TEAM



Mayor Michelle Wu

SASAKI



City of Boston
Public Facilities

Programming Study
**Boston Public Library
Egleston Square Branch**

City of Boston
Kim Janey, Mayor
Dion Irish, Chief of Operations
Boston Public Library
David Leonard, President
Public Facilities Department
Kerrie Griffin, Director
Department of Neighborhood Development
Shejla Dillon, Director
Aisha Miller, Chief of Civic Engagement



AnnBeha Architects

October 2021

PROGRAMMING + FEASIBILITY STUDY



Mayor Michelle Wu

SASAKI



City of Boston
Public Facilities

2021 STUDY

What we studied

- What programs and services should this branch provide?
- How does this community want to use the library?
- What is the condition of the existing building? Is it large enough?
- Should the project include housing?
- What design elements will be important to include?



Mayor Michelle Wu

SASAKI



City of Boston
Public Facilities

2021 STUDY

What we heard from the Community

- The location is uniquely positioned to serve several neighborhoods with deep cultural roots
- Library staff and programs are beloved in this community
- Children's programming is popular, and the library is a resource for local kids
- We need more spaces to meet, more spaces to hold library programs
- Library users appreciate the big windows and pleasant atmosphere
- The new library should be designed for sustainability.
- Holds pickup and "library of things" are popular.
- A need for more Spanish-language books and more computer access
- The garden brings people together. Outdoor green space is very important
- The site does not seem to be large enough to include both housing and all the other things that the community wants to see in the library



Mayor Michelle Wu

SASAKI

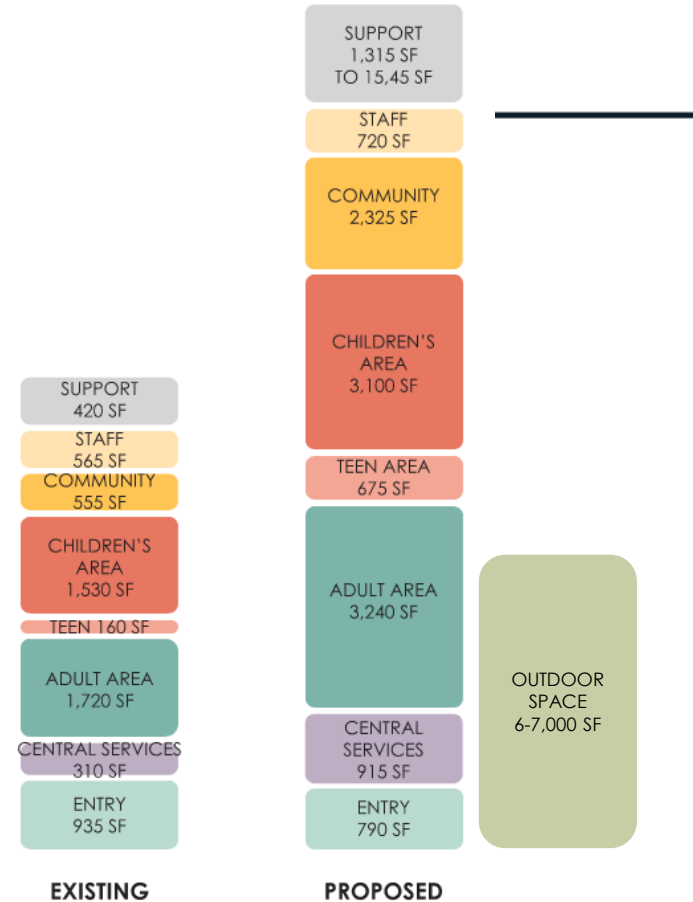


City of Boston
Public Facilities

2021 STUDY

Program

- The building needs to be significantly larger to house all of the library programs + services that are desired
- Outdoor space is an important element for this community



Note: Areas are approximate



Mayor Michelle Wu

SASAKI



City of Boston
Public Facilities

2021 STUDY

Program

ENTRY LOBBY SELF CHECKOUT + HOLDS NEW BOOK DISPLAY EXHIBITION/GALLERY WALL 700 SF	ADULT COLLECTION SEATING TECHNOLOGY W/ PRINT STATION 3,200 SF	TEEN COLLECTION SEATING 700 SF	CHILDREN COLLECTION SEATING TECHNOLOGY TWEEN AREA STORYTIME AREA FAMILY RESTROOM 3,100 SF
COMMUNITY COMMUNITY ROOM W/ KITCHENETTE CLASSROOM/CRAFT ROOM STUDY ROOMS PHONE BOOTHS 2,300 SF	STAFF SERVICE DESK(S) WORK ROOM OFFICE BREAK ROOM 1,100 SF	SERVICE PUBLIC RESTROOMS ALL-GENDER RESTROOM CUSTODIAL SPACES OUTDOOR EQUIPMENT STOR. TRASH & RECYCLING ROOM OTHER BLDG SUPPORT SPACES FRIENDS STORAGE 2,300 SF	

Note: Areas are approximate



Mayor Michelle Wu

SASAKI



City of Boston
Public Facilities

2021 STUDY

Conclusions

- The building needs to be significantly larger to house all of the library programs + services that are desired
- Outdoor space is an important element for this community
- The existing building is beyond its useful lifespan and should be replaced
- The project should not include housing; it will be a standalone branch library, as it is today



Mayor Michelle Wu

SASAKI



City of Boston
Public Facilities



DESIGN PHASE



Mayor Michelle Wu

SASAKI



BOSTON
PUBLIC
LIBRARY



City of Boston
Public Facilities

DESIGN PHASE OVERVIEW

15 Months, 3 Community Meetings

- Revisit site and neighborhood analysis
- Set design goals for the library experience
- Set sustainability goals
- Confirm the space needs of each program
- Select HVAC and energy systems
- Develop a design that accommodates all of the project needs, including outdoor space and utilities
- Confirm the design is within the budget
- Refine the design; select materials and systems
- Document the design for bidding (construction documents)

← *We are here*



Mayor Michelle Wu

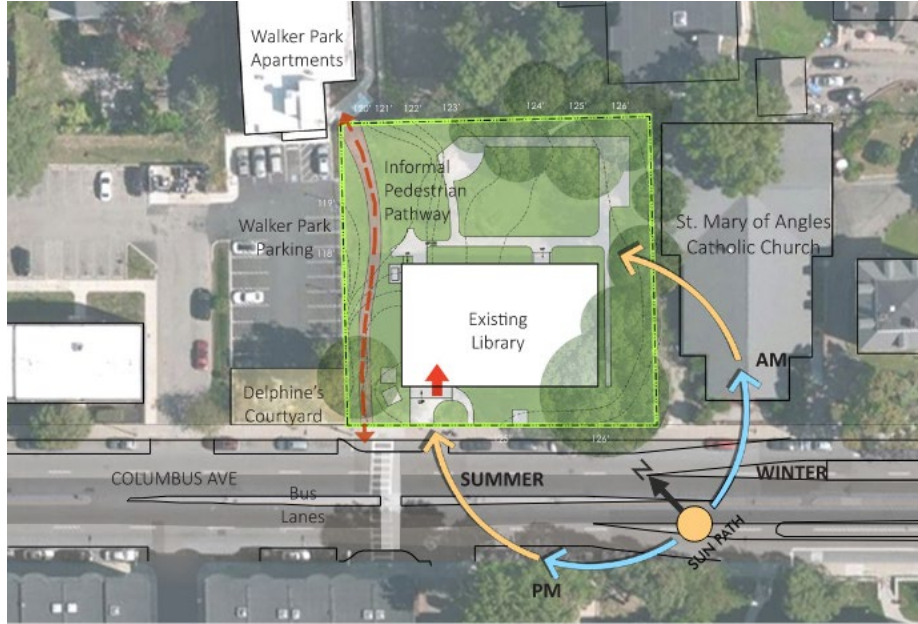
SASAKI



City of Boston
Public Facilities

SITE & NEIGHBORHOOD ANALYSIS

Site location + features



Mayor Michelle Wu

SASAKI



City of Boston
Public Facilities

SITE & NEIGHBORHOOD ANALYSIS

Existing Building + Surroundings



Front of Building



Walker Park Apartments



Rear of Building



Pedestrian Path



Mayor Michelle Wu

SASAKI



City of Boston
Public Facilities

SITE & NEIGHBORHOOD CONTEXT

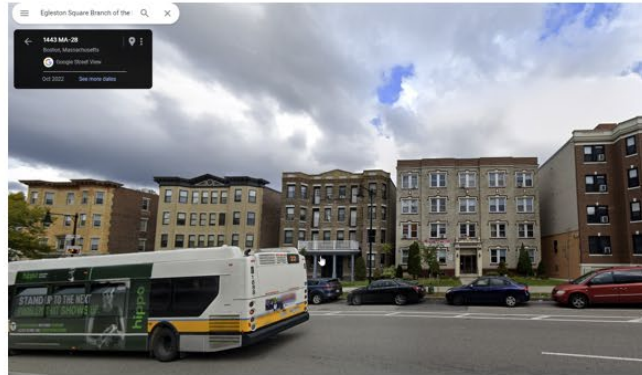
Urban History + Context



1880s Wood-
Frame
Construction



1920s Masonry
Mid-Rise Housing



1960s and 1970s
Demolition and
Redevelopment



Mayor Michelle Wu

SASAKI



City of Boston
Public Facilities

SITE & NEIGHBORHOOD CONTEXT

Nature in the City



Mayor Michelle Wu

SASAKI



City of Boston
Public Facilities

TOPOGRAPHY

Existing

- It is important to make the outdoor space, the pedestrian path, and all public areas universally accessible
 - Sidewalk slopes downhill from east to west
 - Back corner of site at Walker Park Apts. is about 9'-6" lower than the front corner next to the church
 - Pedestrian crosswalk at west side of site
- Existing trees provide summer shade and winter sun. The building and site design should try to preserve them.

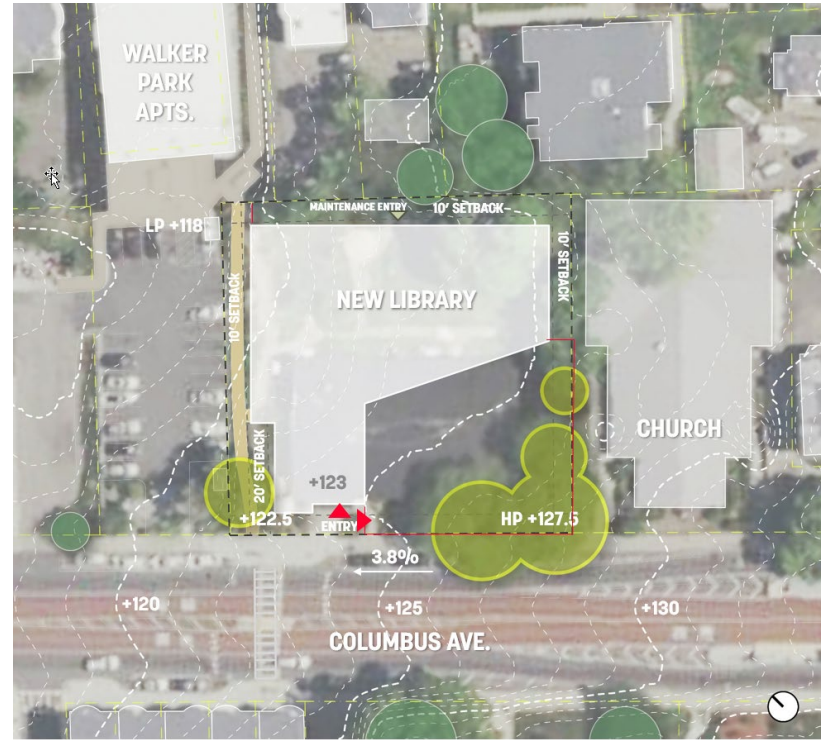


TOPOGRAPHY

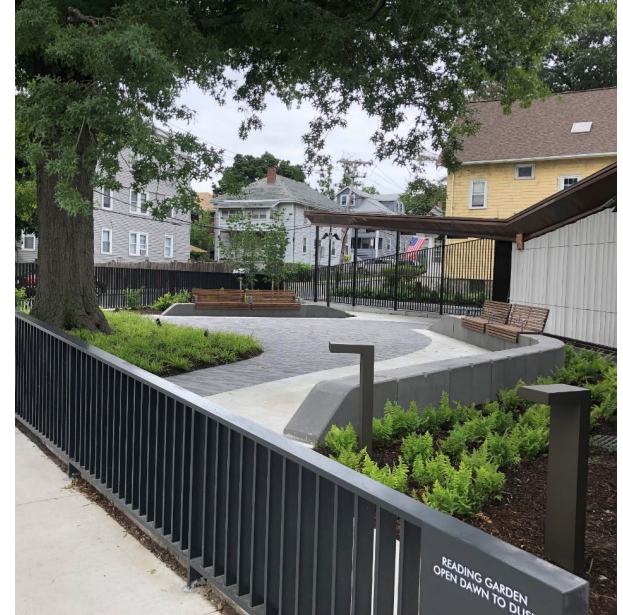
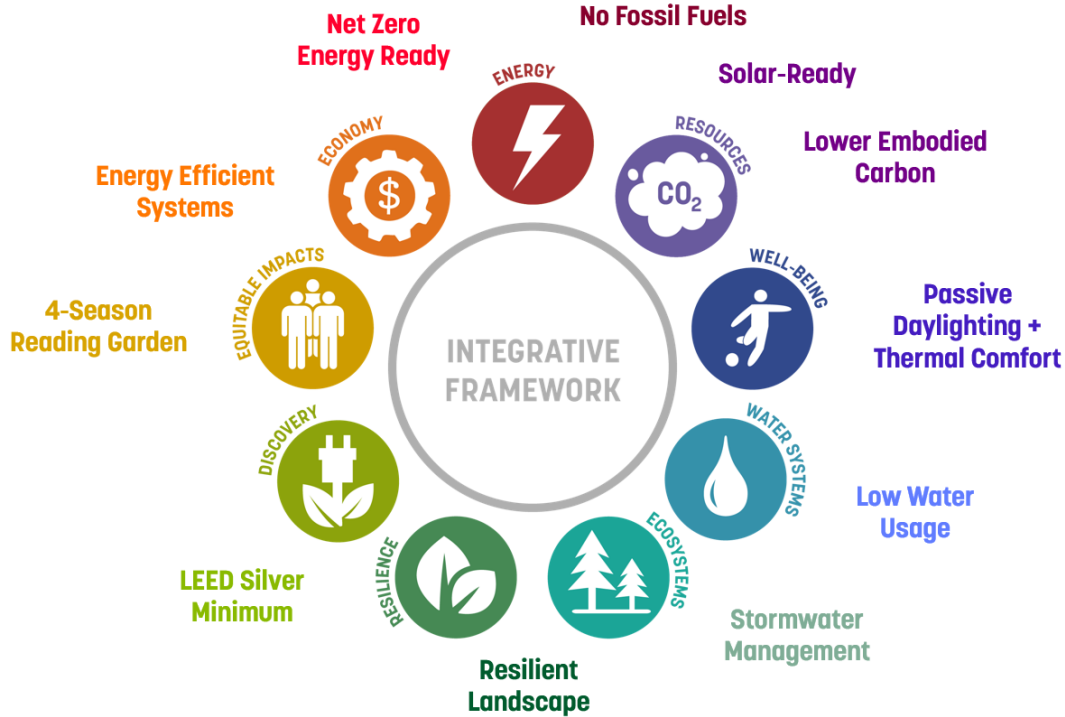
Proposed

- It is important to make the outdoor space, the pedestrian path, and all public areas universally accessible
 - Sidewalk slopes downhill from east to west
 - Back corner of site at Walker Park Apts. is about 9'-6" lower than the front corner next to the church
 - Pedestrian crosswalk at west side of site; locate entrance near here
- Existing trees provide summer shade and winter sun. The building and site design should try to preserve them.

Note: Future building footprint shown is conceptual



SUSTAINABILITY GOALS



Adams Branch



Mayor Michelle Wu

SASAKI



City of Boston
Public Facilities

LEED SILVER MINIMUM

LEED Categories and How We Will Meet Them

→ Integrative Process

- Considering sustainability, including energy, early in the design process

→ Location and Transportation

- Site is urban, previously developed, and well-served by public transit

→ Sustainable Sites

- Assess site for resilience needs
- Manage rain water onsite
- Reduce heat-island effect
- Reduce light pollution

→ Water

- Reduce indoor and outdoor water use

→ Energy

- Design as efficient systems as we can
- Commission the systems to ensure that they are working as designed
- Track energy usage after the building opens

→ Indoor Air Quality

- Ventilate and filter according to current best practices
- Provide good interior lighting (including daylighting)

→ Innovation Credits

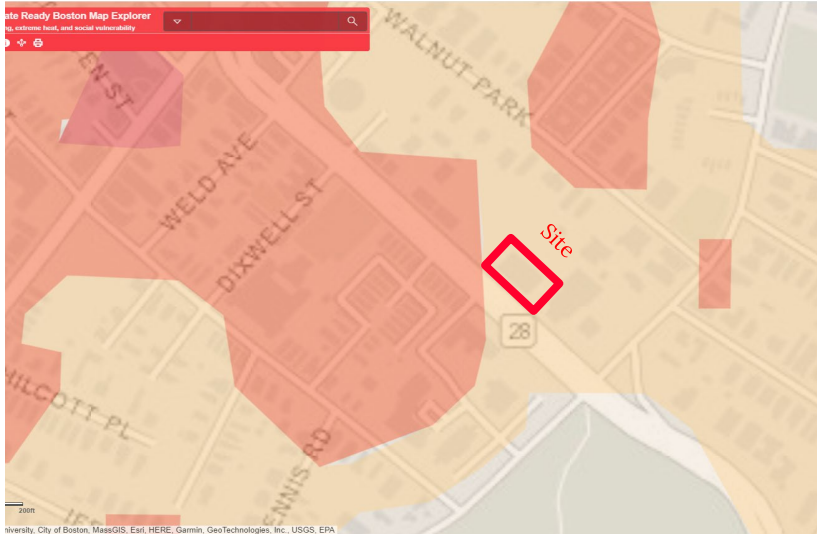
- Green Building Education
- Sustainable purchasing



SUSTAINABLE SITE APPROACH

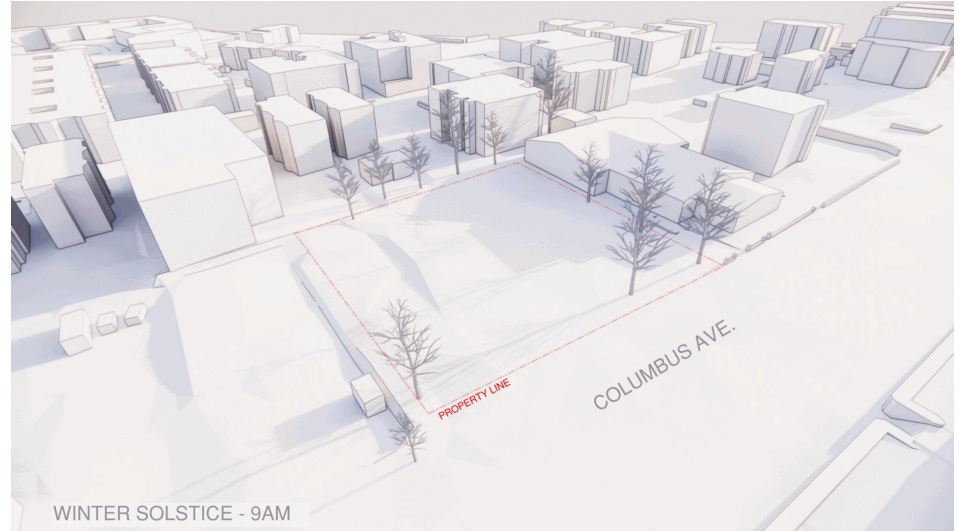
Heat Resilience + Solar Exposure

Urban heat island is moderate on site. We will be addressing the effect by maintaining existing tree canopy



Heat: Daytime Land Surface Temperature

- Very High
- High
- Moderate



Mayor Michelle Wu

SASAKI



City of Boston
Public Facilities

CITY OF BOSTON SUSTAINABILITY GOALS

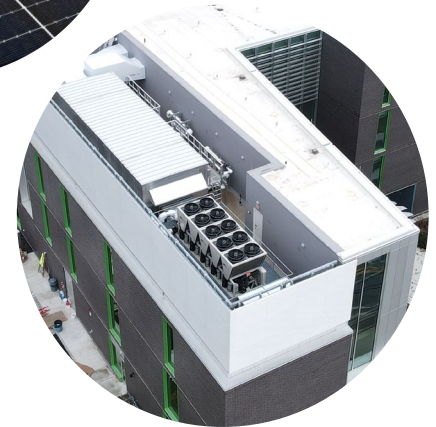
Net Zero Carbon / Net Zero Energy Ready

→ Net Zero Carbon

- No fossil fuels will be burned to run the building systems
- “All electric”

→ Next Zero Energy Ready

- City of Boston can enter into an agreement with a solar energy provider to add solar panels that will power the building
- The roof will be designed to optimize solar potential



Mayor Michelle Wu

SASAKI



City of Boston
Public Facilities

DESIGNING THE LIBRARY EXPERIENCE

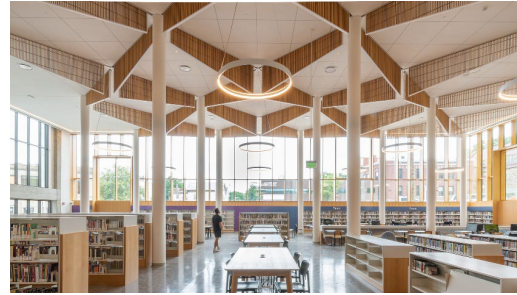
Civic
Presence



Great
Natural Light



Clear Sightlines
+ Wayfinding



Connection to the
Outdoors



Mayor Michelle Wu

SASAKI



City of Boston
Public Facilities

2021 STUDY

Program

ENTRY LOBBY SELF CHECKOUT + HOLDS NEW BOOK DISPLAY EXHIBITION/GALLERY WALL 700 SF	ADULT COLLECTION SEATING TECHNOLOGY W/ PRINT STATION 3,200 SF	TEEN COLLECTION SEATING 700 SF	CHILDREN COLLECTION SEATING TECHNOLOGY TWEEN AREA STORYTIME AREA FAMILY RESTROOM 3,100 SF
COMMUNITY COMMUNITY ROOM W/ KITCHENETTE CLASSROOM/CRAFT ROOM STUDY ROOMS PHONE BOOTHS 2,300 SF	STAFF SERVICE DESK(S) WORK ROOM OFFICE BREAK ROOM 1,100 SF	SERVICE PUBLIC RESTROOMS ALL-GENDER RESTROOM CUSTODIAL SPACES OUTDOOR EQUIPMENT STOR. TRASH & RECYCLING ROOM OTHER BLDG SUPPORT SPACES FRIENDS STORAGE 2,300 SF	

Note: Areas are approximate



Mayor Michelle Wu

SASAKI



City of Boston
Public Facilities

DESIGNING THE LIBRARY EXPERIENCE

Outdoor Space



Mature Trees



Outdoor classroom



Planting beds



Seating



Mayor Michelle Wu

SASAKI



City of Boston
Public Facilities

DESIGNING THE LIBRARY EXPERIENCE

Entry + Service Point



Mayor Michelle Wu

SASAKI



BOSTON
PUBLIC
LIBRARY



City of Boston
Public Facilities

DESIGNING THE LIBRARY EXPERIENCE

Collections + Seating



Mayor Michelle Wu

SASAKI



City of Boston
Public Facilities

DESIGNING THE LIBRARY EXPERIENCE

Teen



Mayor Michelle Wu

SASAKI



City of Boston
Public Facilities

DESIGNING THE LIBRARY EXPERIENCE

Children's



Mayor Michelle Wu

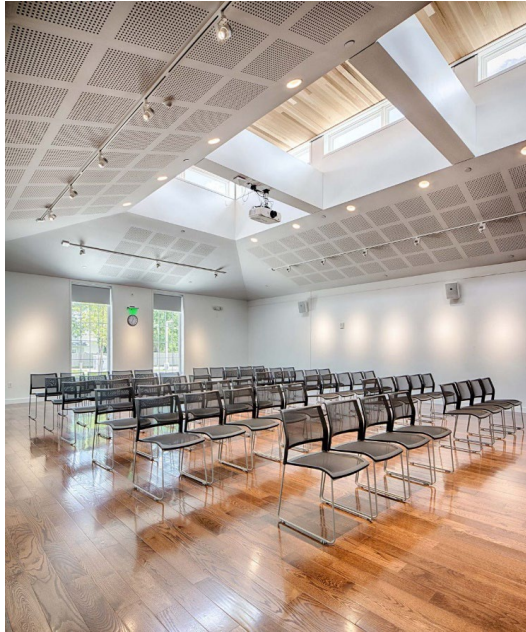
SASAKI



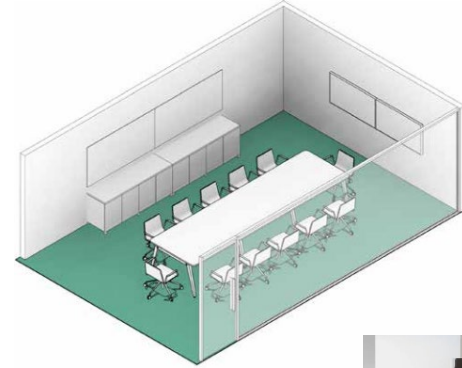
City of Boston
Public Facilities

DESIGNING THE LIBRARY EXPERIENCE

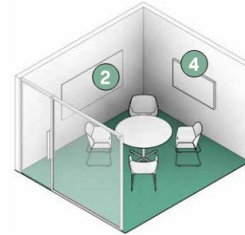
Community Spaces



Community Room for 100



Classroom



Study Rooms



Phone Booths



Mayor Michelle Wu

SASAKI



City of Boston
Public Facilities



FEEDBACK & QUESTIONS

What would make the design of this branch library successful?



Mayor Michelle Wu

SASAKI



City of Boston
Public Facilities

MORE TO SAY? MISSED THE MEETING?

What would make the design successful?

Three ways to share your thoughts:

1. Please visit <https://www.bpl.org/egleston-square-project/> to leave a comment.
2. Please [visit the branch](#) to write or draw your ideas on a postcard!
3. Please e-mail Priscilla Foley, Director of Neighborhood Services, Boston Public Library: pfoley@bpl.org



Mayor Michelle Wu

SASAKI



City of Boston
Public Facilities