



# EGLESTON SQUARE BRANCH LIBRARY

Design Phase Community Meeting #2  
November 21, 2024




Mayor Michelle Wu



City of Boston  
Public Facilities

# INTERPRETATION / INTERPRETACIÓN

## Windows | macOS

1. In your meeting/webinar controls, click **Interpretation** .
2. Click the language that you would like to hear.
3. (Optional) To hear the interpreted language only, click **Mute Original Audio**.

### Notes:

- You must join the meeting audio through your computer audio/VoIP. You cannot listen to language interpretation if you use the [dial-in](#) or [call me](#) phone audio features.
- As a participant joining a language channel, you can broadcast back into the main audio channel if you unmute your audio and speak.

## Android | iOS

1. In your meeting controls, tap the ellipses **⋮**.
2. Tap **Language Interpretation**.
3. Tap the language you want to hear.
4. (Optional) Tap the toggle to **Mute Original Audio**.
5. Click **Done**.

### Notes:

- You cannot listen to language interpretation if you use the [dial-in](#) or [call me](#) phone audio features.
- As a participant joining a language channel, you can broadcast back into the main audio channel if you unmute your audio and speak.



Mayor Michelle Wu

SASAKI



City of Boston  
Public Facilities

# QUESTIONS? PLEASE HOLD THEM UNTIL THE END!

JOINING BY WEB (Computer, Tablet, etc):



Click to raise  
your hand



Click to type  
your questions



Click to mute  
or unmute



Click to show  
or hide your  
video

## ¿PREGUNTAS? ¡POR FAVOR, GUARDENLOS HASTA EL FINAL!

FAVOR SELECCIONAR LA TRADUCCIÓN A ESPAÑOL CON EL  
ICONO DE GLOBO (🌐) DE LA PARTE INFERIOR A LA DERECHA

Instrucciones para escuchar la interpretación en Español:  
Seleccione un canal en zoom para escuchar. Si tiene computador,  
busque el globo terráqueo/mundo y escoja Español.  
Favor de poner en mudo su microfono durante la sesión.



# EGLESTON SQUARE BRANCH LIBRARY

Design Phase Community Meeting #2  
November 21, 2024



Mayor Michelle Wu



City of Boston  
Public Facilities



**CITY OF BOSTON**

*Public Facilities Team*

**DION IRISH** *Chief of Operations*

**CARLETON JONES** *Director*

**ROHN MACNULTY** *Deputy Director*

**ELLEN MCDONOUGH** *Chief of Staff*

**LISA GUSCOTT WELLS** *Assistant Director*

**SUSAN PHILLIPSON** *Project Manager*

# AGENDA

---

1. Introductions
2. Background Information
3. Design Updates
  - Building plans
  - Site plans
4. Feedback & Questions
  - Please hold your questions and comments until the end



Mayor Michelle Wu

SASAKI



City of Boston  
Public Facilities

# TEAM

---



Mayor Michelle Wu

**SASAKI**



City of Boston  
Public Facilities



Programming Study  
**Boston Public Library  
Egleston Square Branch**

**City of Boston**

Kim Janey, Mayor

Dion Irish, Chief of Operations

**Boston Public Library**

David Leonard, President

**Public Facilities Department**

Kerrie Griffin, Director

**Department of Neighborhood Development**

Shejla Dillon, Director

Aisha Miller, Chief of Civic Engagement



AnnBeha Architects

October 2021

# BACKGROUND INFORMATION



Mayor Michelle Wu

SASAKI



City of Boston  
Public Facilities

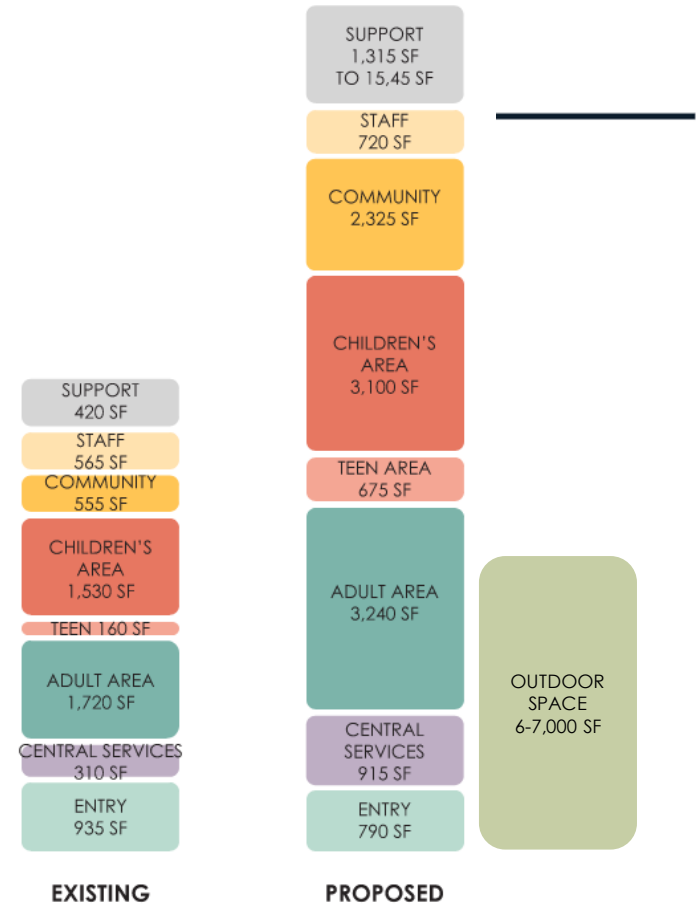


# 2021 STUDY

## Conclusions

- The building needs to be significantly larger to house all of the library programs + services
- Outdoor space is an important element for this community
- The existing building is beyond its useful lifespan and should be replaced
- The project should not include housing; it will be a standalone branch library, as it is today

Note: Areas are approximate



Mayor Michelle Wu

SASAKI



City of Boston  
Public Facilities

# WHAT WE HEARD

---

## *Community Meeting #1*

Outdoor space is important to the community

- Quality of the space: preserving some of the trees, well-landscaped
- Uses of the space: want to see gardening, events, performances
- What is the best way to shelter the outdoor space from the street?

Sustainability is important. Let's aim high

Love the staff and all they do

- Interest in community program spaces inside: teaching and gathering spaces
- The seed library should be incorporated



Mayor Michelle Wu

**SASAKI**



City of Boston  
Public Facilities

# WHAT WE HEARD

## Postcards to the Design Team

### Programs, Services, & Collections

- English-language classes
- Story Time
- More variety of books and movies
- Xbox and other games
- A kids' art program
- Classic fiction, poetry, and drama
- "A few more Diary of a Wimpy Kid books"
- A 3-D printer or laser cutter

I want my library to have...

Quiero que mi biblioteca tenga...

Large windows that let in lots of light, and comfy couches and chairs to read on

I want my library to have...

Quiero que mi biblioteca tenga...

snacks and good graphic novels

I want my library to have...

Quiero que mi biblioteca tenga...

• Salón <sup>(cerrado)</sup> para que los niños juegan  
y un salón de arte para los niños y los adultos

(Optional)  
Name/Nombre:  
Email/Correo Electronico:



Mayor Michelle Wu

SASAKI



BOSTON  
PUBLIC  
LIBRARY



City of Boston  
Public Facilities

# WHAT WE HEARD

---

## *Postcards to the Design Team*

### Spaces

- Meeting spaces with acoustic isolation, AV systems, capacity for events
- Different sizes of rooms for different uses
- “A place for grownups so they can talk”
- Dedicated kids’ and teen areas
- Activity areas
- Arts & crafts areas for children and adults
- Accessible, gender-neutral bathrooms with baby-changing stations
- A pre-teen (tween) section

### Design Elements

- Desks where people can work or study, including in the children’s room
- Comfortable seating
- Book shelves that are not too low
- “A really big clock”
- Modern colors
- Large windows, lots of natural light
- Automated shades





# DESIGN PHASE



Mayor Michelle Wu

SASAKI



City of Boston  
Public Facilities

# DESIGN PHASE OVERVIEW

---

15 Months, 3 Community Meetings

- Revisit site and neighborhood analysis
- Set design goals for the library experience
- Set sustainability goals
- Confirm the space needs of each program
- Select HVAC and energy systems
- Develop a design that accommodates all of the project needs, including outdoor space and utilities
- Confirm the design is within the budget
- Refine the design; select materials and systems
- Document the design for bidding (construction documents)

← *We are here*



Mayor Michelle Wu

SASAKI



City of Boston  
Public Facilities

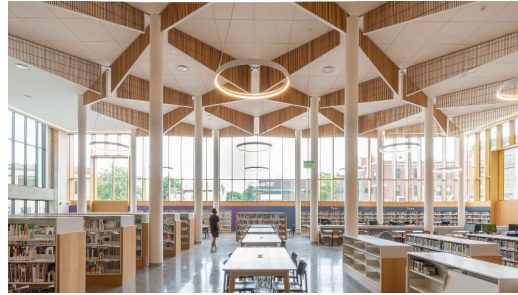


# DESIGNING THE LIBRARY EXPERIENCE

*Civic  
Presence*



*Great  
Natural Light*



*Clear Sightlines  
+ Wayfinding*

*Connection to the  
Outdoors*



Mayor Michelle Wu

SASAKI



City of Boston  
Public Facilities

# FLOOR PLAN ORGANIZATION

Level 1

4-Person Study Room

Teen Area

- Seating
- Collections

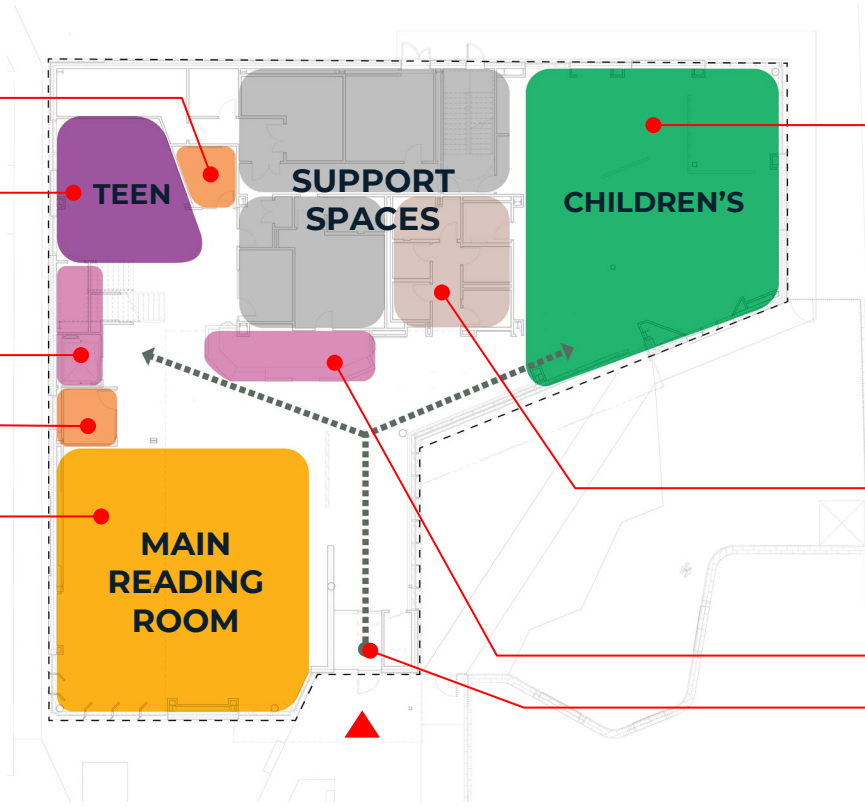
Stair & Elevator

4-Person Study Room

Main Reading Room

- Seating
- Computers
- Collections

16,500 SF over 1.5 levels



Children's Area

- Tables + Chairs
- Early Literacy Area
- Activity tables + sink
- Collections
- Staff service point
- Garden access

Single-User Bathrooms

Central Service Desk

Main Entrance



Mayor Michelle Wu

SASAKI



City of Boston  
Public Facilities

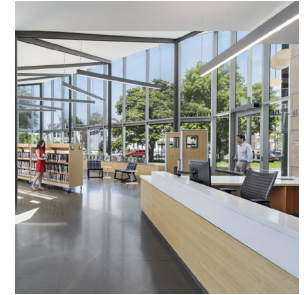
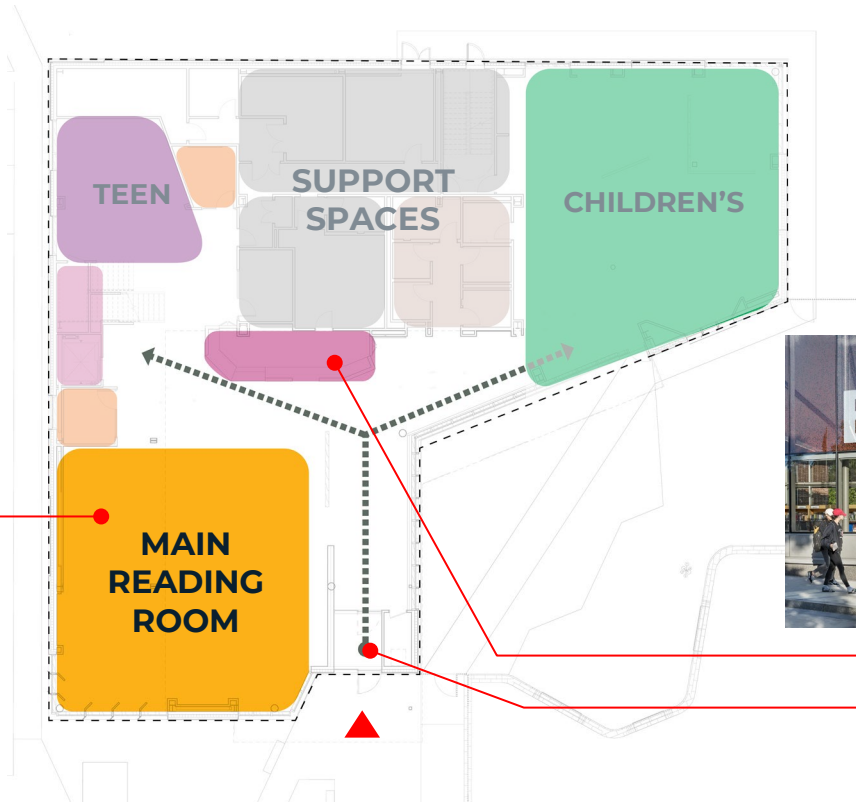
# FLOOR PLAN ORGANIZATION

Level 1



Main Reading Room

- Seating
- Computers
- Collections



Central Service Desk

Main Entrance



Mayor Michelle Wu

SASAKI



BOSTON  
PUBLIC  
LIBRARY

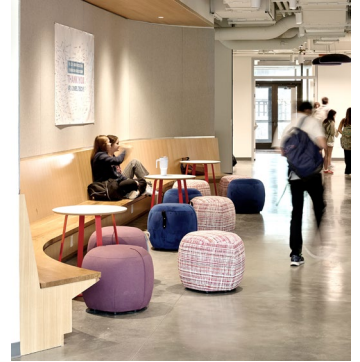
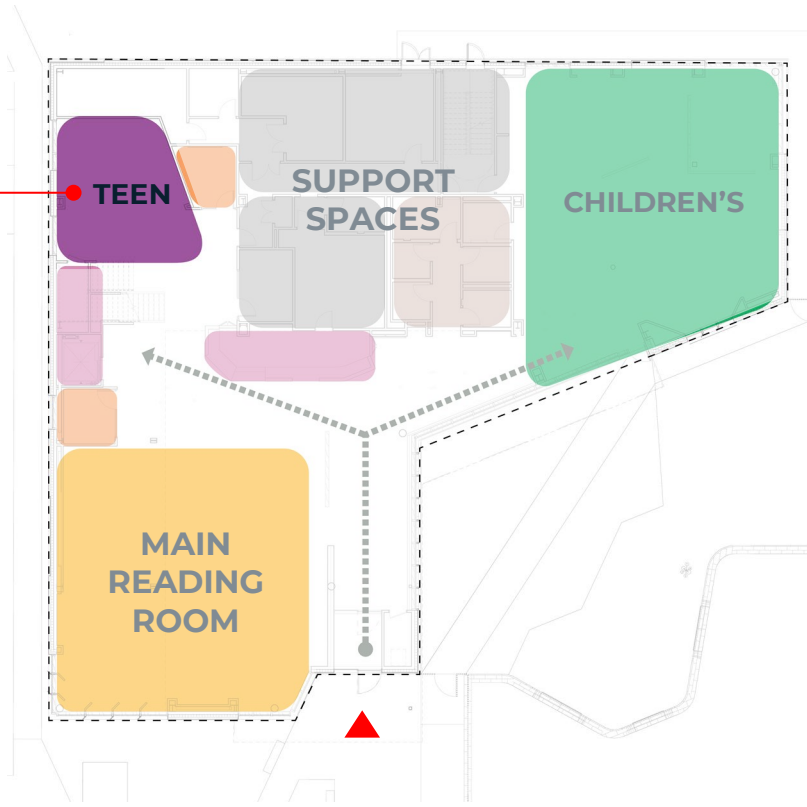


City of Boston  
Public Facilities

# FLOOR PLAN ORGANIZATION

Level 1

- Teen Area
- Seating
  - Collections



Mayor Michelle Wu

SASAKI



City of Boston  
Public Facilities

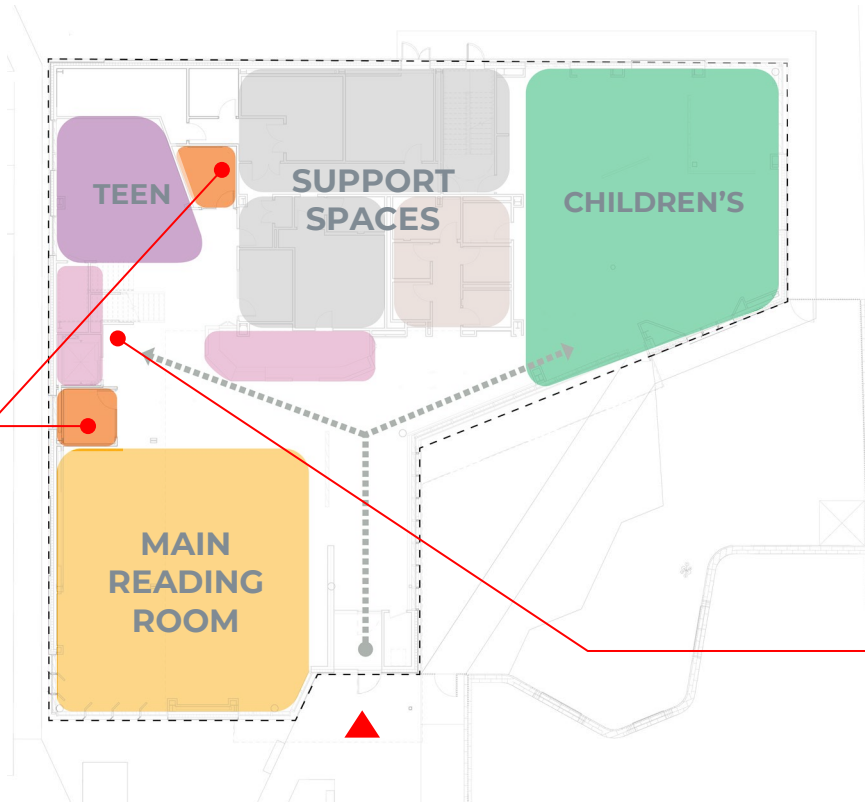
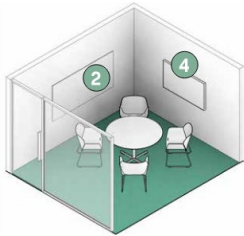


# FLOOR PLAN ORGANIZATION

Level 1



4-Person Study Rooms



Private phone booth



Mayor Michelle Wu

SASAKI



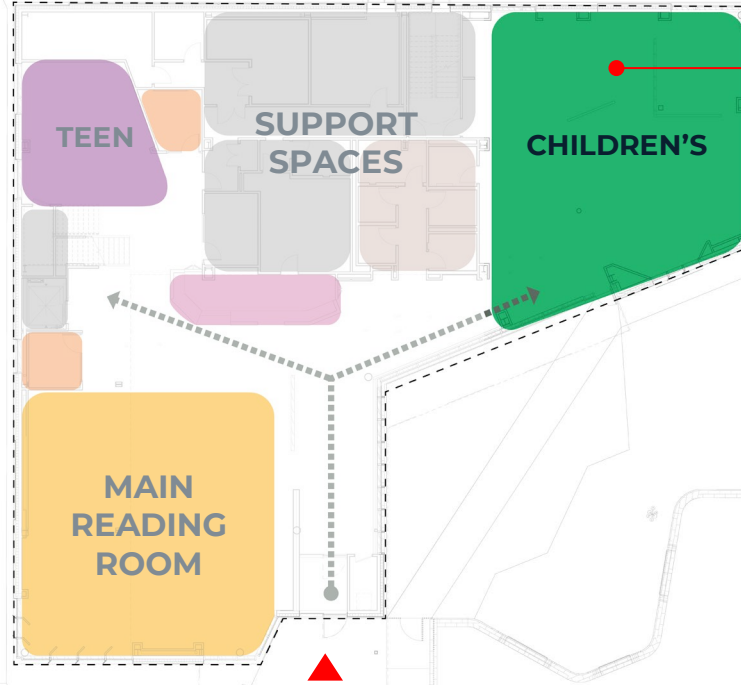
City of Boston  
Public Facilities

# FLOOR PLAN ORGANIZATION

## Level 1



16,500 SF over 1.5 levels



### Children's Area

- Tables + Chairs
- Early Literacy Area
- Activity tables + sink
- Collections
- Staff service point
- Garden access



Mayor Michelle Wu

SASAKI



BOSTON  
PUBLIC  
LIBRARY



City of Boston  
Public Facilities



# FLOOR PLAN ORGANIZATION

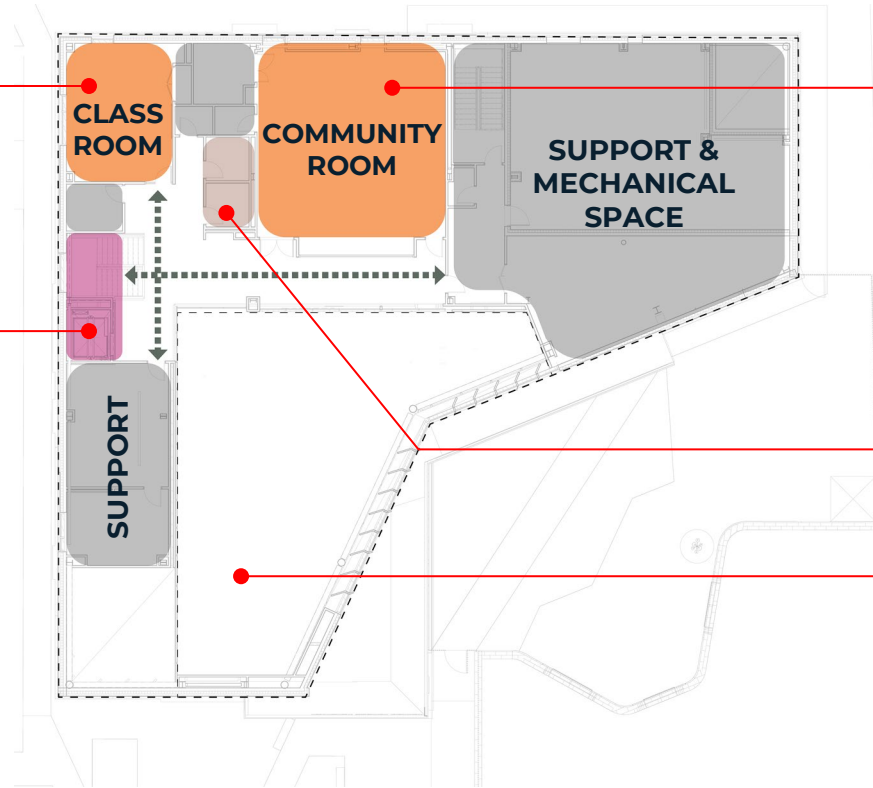
Level 2

## Classroom

- Seats 12 + instructor
- AV and whiteboards
- Flexible furniture
- Sink + storage

## Stair & Elevator

16,500 SF over 1.5 levels



## Community Room

- Seats 100+
- AV for events
- Flexible furniture
- Sink + storage

## Single-User Bathrooms

## Open to Below



Mayor Michelle Wu

SASAKI



City of Boston  
Public Facilities

# FLOOR PLAN ORGANIZATION

Level 2

## Classroom

- Seats 12 + instructor
- AV and whiteboards
- Flexible furniture
- Sink + storage



Mayor Michelle Wu

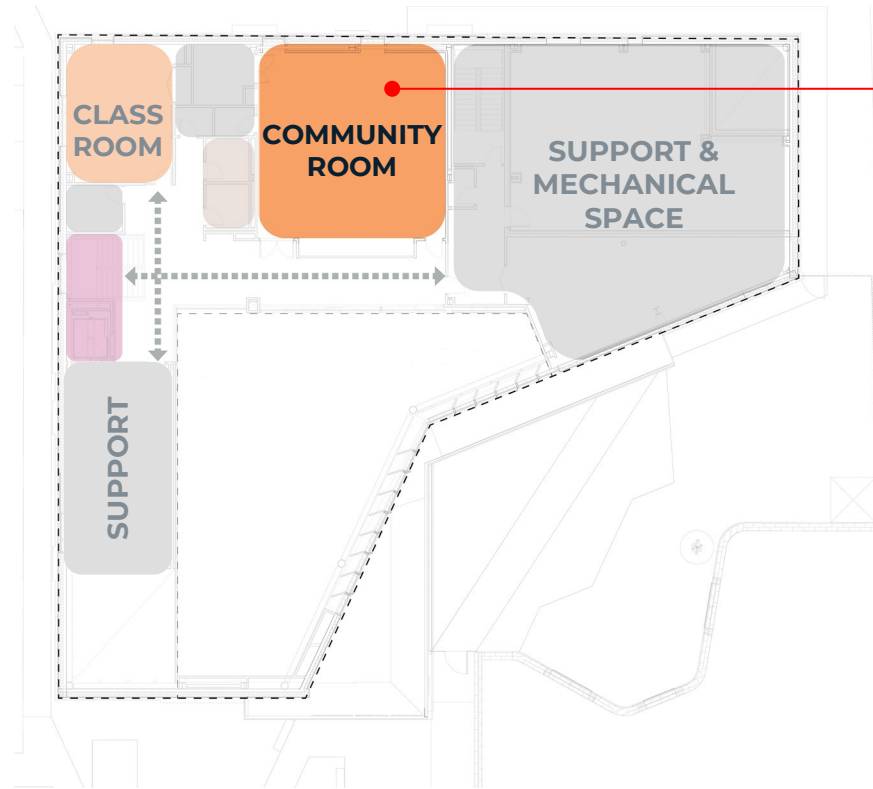
SASAKI



City of Boston  
Public Facilities

# FLOOR PLAN ORGANIZATION

Level 2



Community Room

- Seats 100+
- AV for events
- Flexible furniture
- Sink + storage



Mayor Michelle Wu

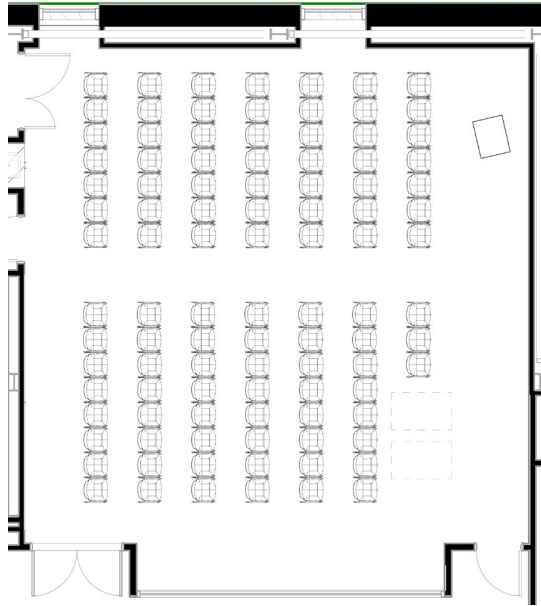
SASAKI



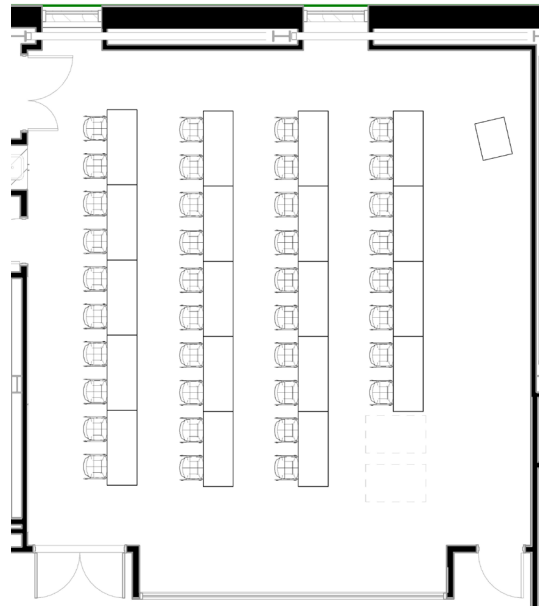
City of Boston  
Public Facilities

# DESIGNING THE LIBRARY EXPERIENCE

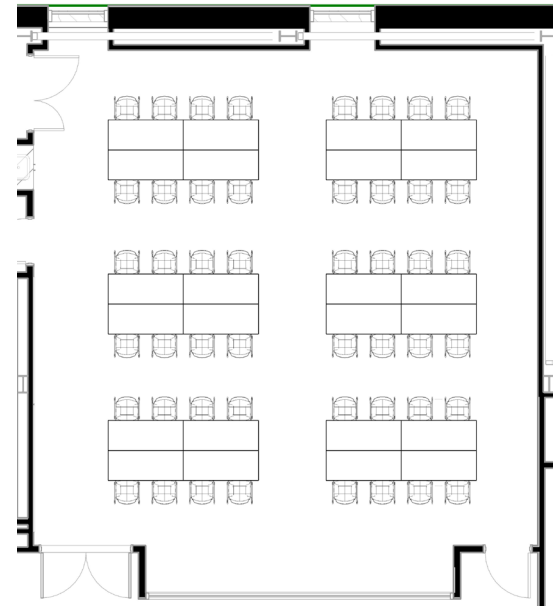
## Community Room Flexible Uses



Lecture  
Seat Count: 100



Lecture @ Training Tables  
Seat Count: 38



Grouped Tables  
Seat Counts: 48



Mayor Michelle Wu

SASAKI



BOSTON  
PUBLIC  
LIBRARY



City of Boston  
Public Facilities

# CITY OF BOSTON SUSTAINABILITY GOALS

*City projects must meet a high standard for sustainability*

## Net Zero Carbon

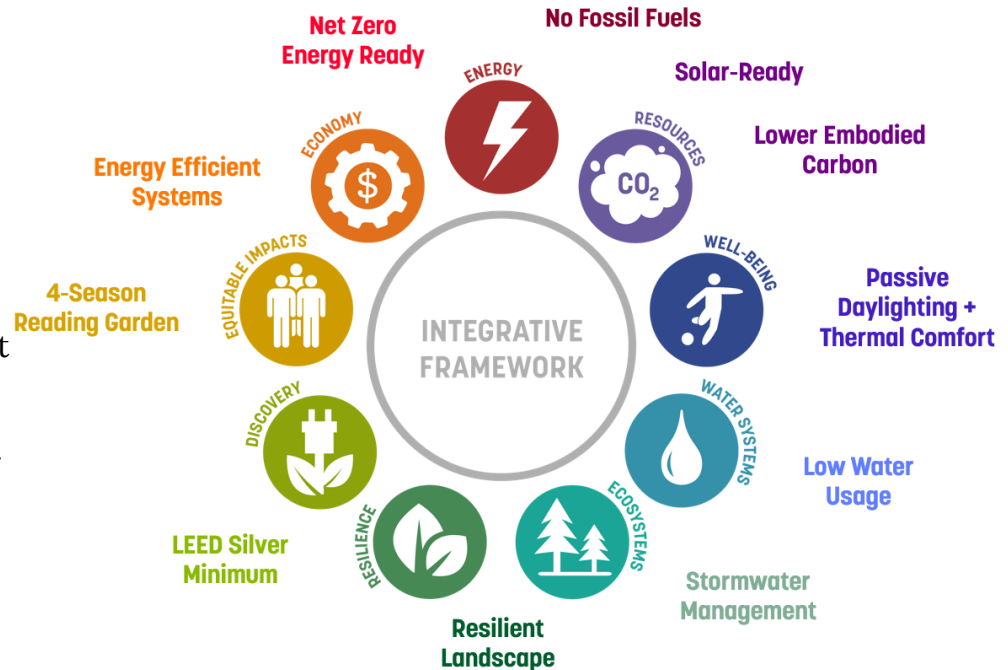
- No fossil fuels will be burned to run the building systems
- “All electric”

## Next Zero Energy Ready

- City of Boston can enter into an agreement with a solar energy provider to add solar panels that will power the building
- The roof will be designed to optimize solar potential

## Stretch Energy Code

- The building must use very little energy and have a tight envelope



Mayor Michelle Wu

SASAKI



City of Boston  
Public Facilities

# SUSTAINABILITY APPROACH

*What you'll find in the completed library*



## → Integrated Design

- The building is located on the site in a way that takes advantage of the shade of the trees
- Windows are carefully placed where they have the most impact on the library experience
- Rainwater is managed on site
- Indoor and outdoor water use is reduced

## → Energy Efficiency

- Uses very little energy for heating and cooling
- Triple-glazed windows and extensive insulation
- High-quality detailing
- Systems are commissioned to ensure that they are working as designed

## → A Healthy Place to Be

- High-quality ventilation and air filtration
- Good interior lighting (including daylighting)
- Non-toxic materials

## → Built to Last

- Durable materials that require little maintenance and don't need to be replaced for many years
- Local and natural materials
- Materials that don't pollute



Mayor Michelle Wu

SASAKI



City of Boston  
Public Facilities



# SITE DESIGN GOALS

---

## *Proposed*

### Accessibility

- It is important to make the outdoor space, the pedestrian path, and all public areas universally accessible
- The existing crosswalk will remain; the existing path between the Walker Park Apartments and Columbus Ave. will be made accessible

### Major Elements

- Existing trees provide summer shade and winter sun. The building and site design will preserve them.
- Area for raised-bed gardening and outdoor learning
- Flexible seating – tables & chairs as well as casual seats
- Playful elements to appeal to kids

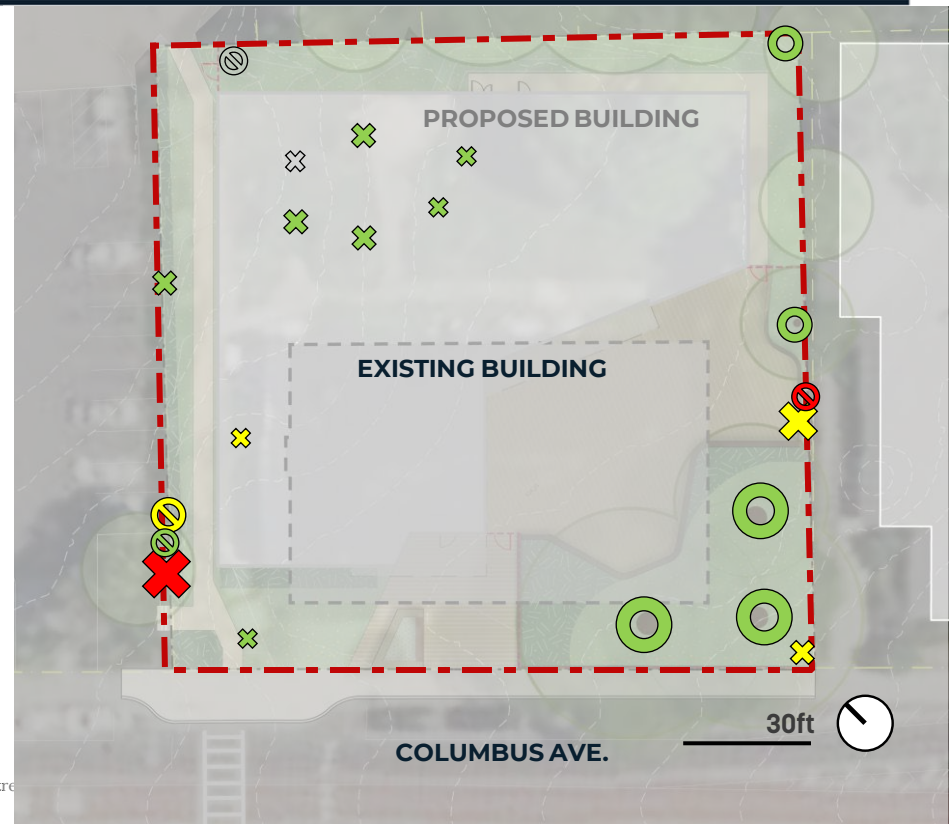


# SITE PLAN IN PROGRESS

## Existing Trees

- This project is following the City's new Tree Ordinance. All trees within the library property are considered City Property Trees and have been surveyed by a certified Arborist.
- Trees that are **invasive species** will be removed.
- Trees that are in **poor condition** will be removed.
- Trees that are **in the proposed building footprint** will be removed.
- The proposed plan **preserves 4** of the largest trees that are in good condition.
- The proposed plan adds at **least 3 new trees**. The design team is studying whether more trees can be added.
- Existing healthy trees can be transplanted next Spring

- Tree in Good Condition
  - Tree in Fair Condition
  - Tree in Poor Condition
  - Save Tree
  - ⊗ Remove Tree
  - ⊗ Remove Invasive Tree
- (size of symbols is proportional to size of tree)



Mayor Michelle Wu

SASAKI



City of Boston  
Public Facilities

# SITE PLAN IN PROGRESS

## Existing Trees



Tree in poor condition  
to be removed



Small fruit tree  
to be removed



Trees to be preserved



Mayor Michelle Wu

SASAKI



City of Boston  
Public Facilities



# SITE PLAN IN PROGRESS

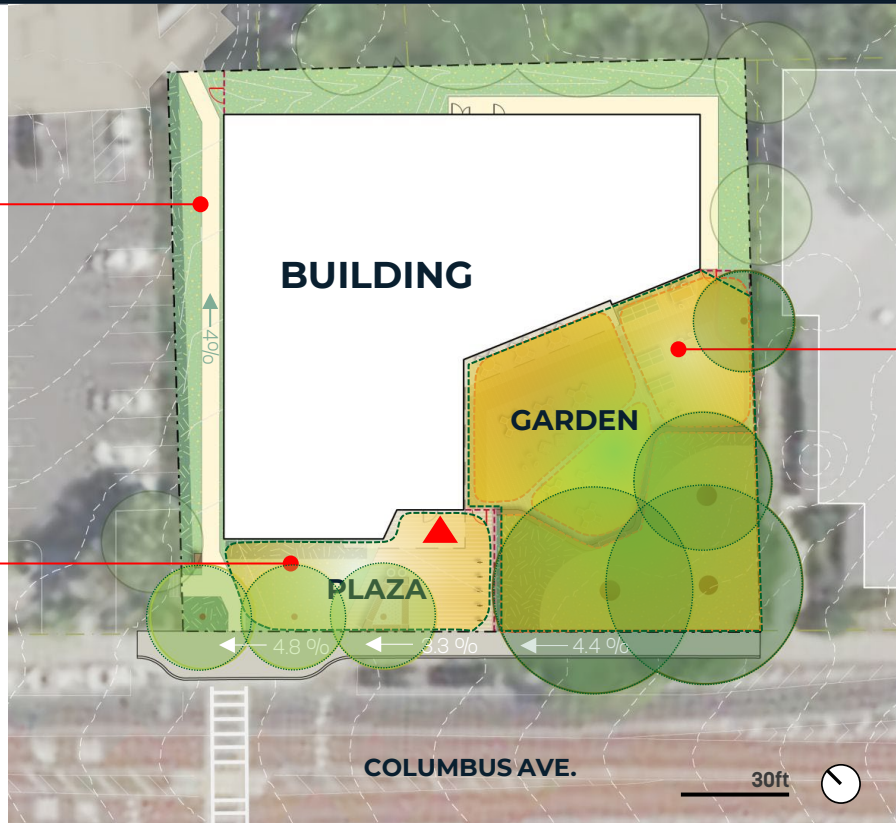
## Overview

### Pedestrian Path

- Connection to Walker Apartments
- Fully accessible
- Well-lit
- Compost station

### Front Plaza

- New trees
- Seating + bike parking
- Entry canopy + main doors
- Book return



### Reading Garden

- 4 major trees preserved
- 7,051-sf reading garden (within fence)
- 1,700-sf paved patio



Mayor Michelle Wu

SASAKI



City of Boston  
Public Facilities

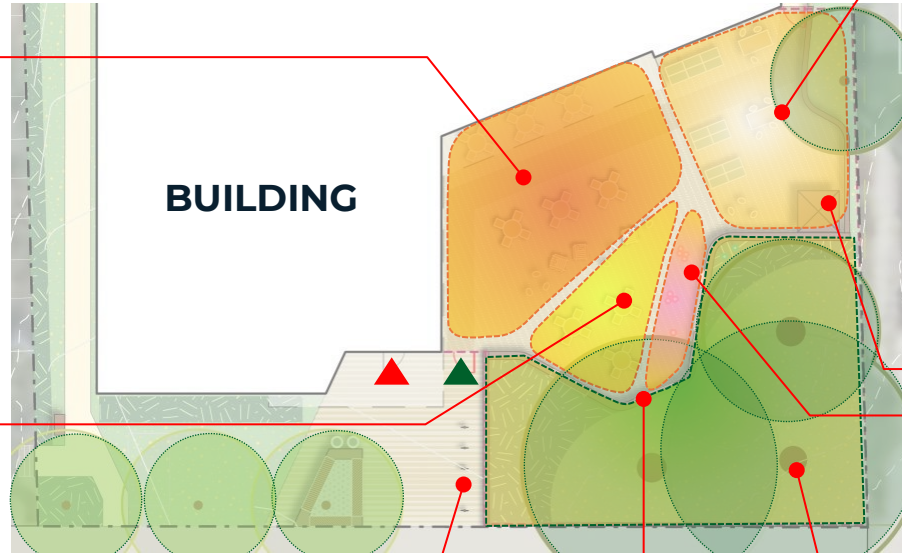
# SITE PLAN IN PROGRESS

## Reading Garden: Elements

### Movable Tables & Chairs



### Casual Seating Area



### Outdoor Classroom / Gardening Area

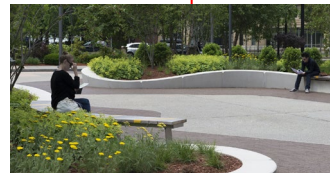


### Tool shed

### Playful elements + misters



### Bike parking Seat wall



### Mature trees + planted buffer



Mayor Michelle Wu

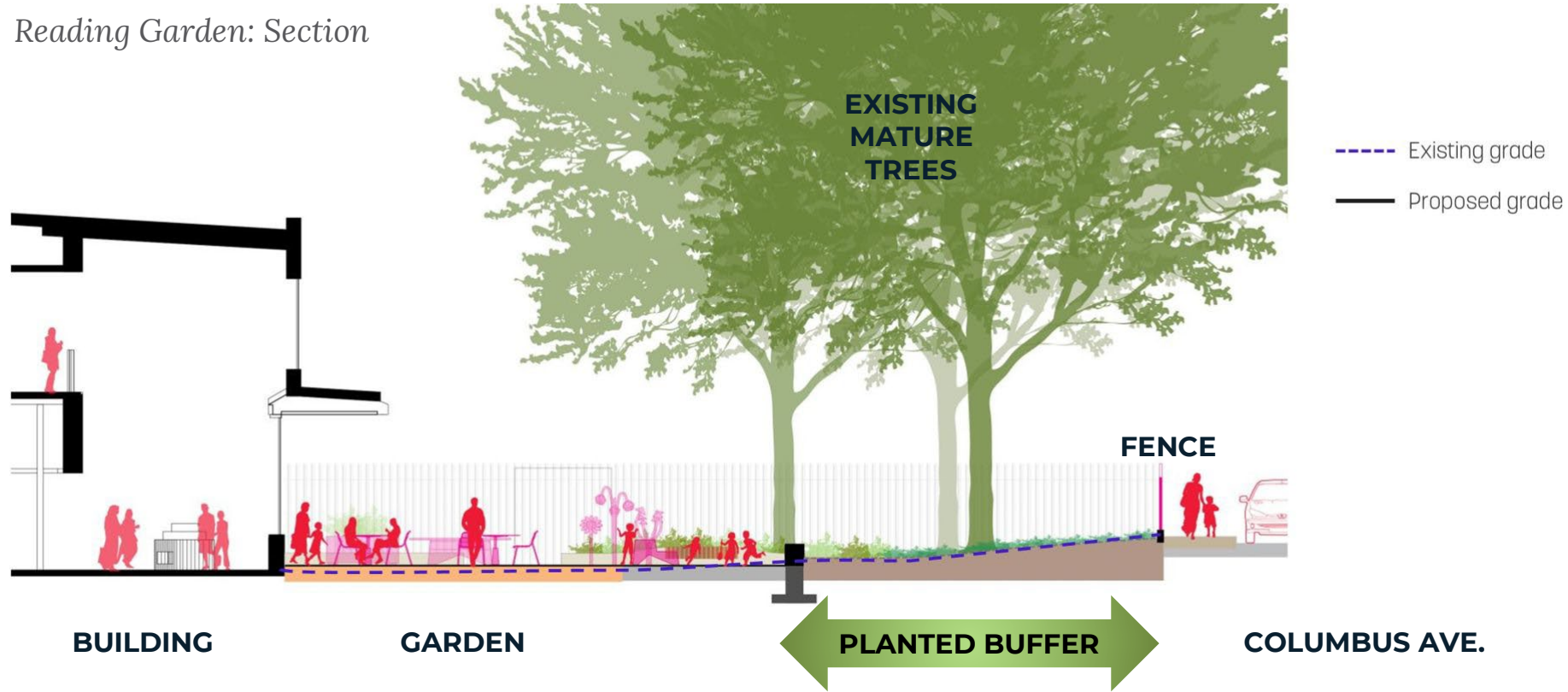
SASAKI



City of Boston  
Public Facilities

# SITE PLAN IN PROGRESS

## Reading Garden: Section



Mayor Michelle Wu

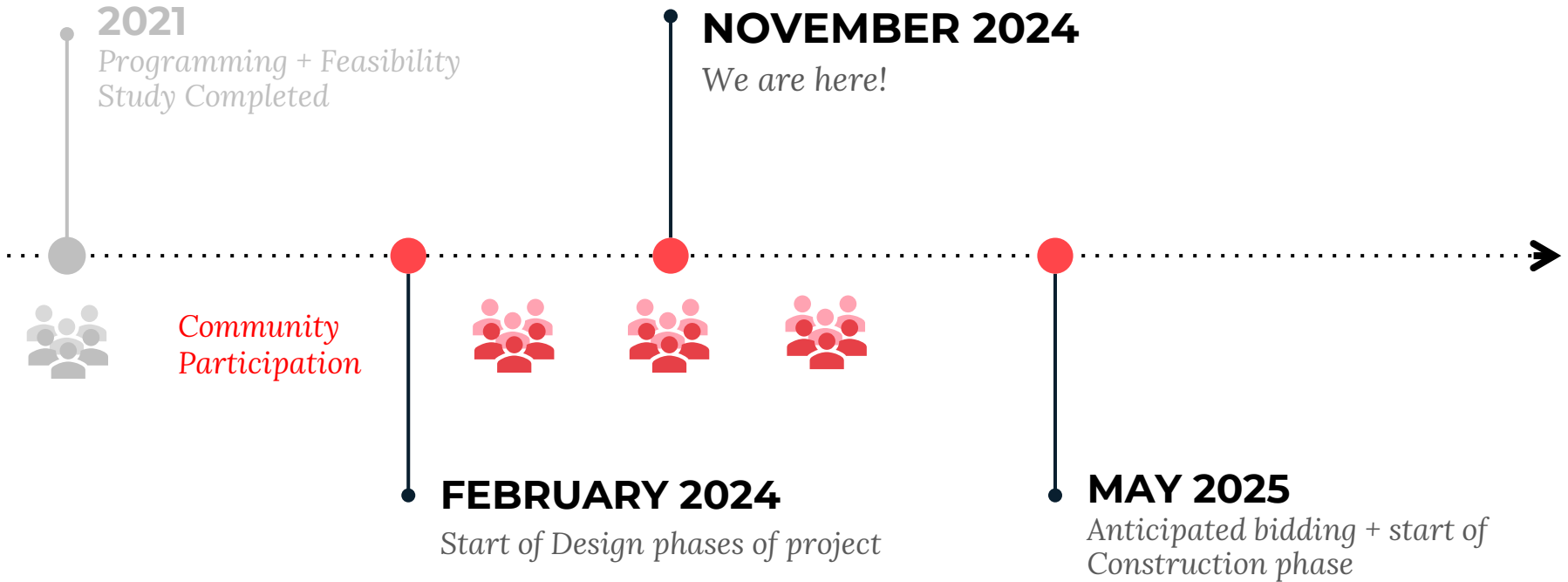
SASAKI



City of Boston  
Public Facilities



# WHAT'S NEXT?



Mayor Michelle Wu

**SASAKI**



**BOSTON  
PUBLIC  
LIBRARY**



City of Boston  
Public Facilities



# FEEDBACK & QUESTIONS

*How will you use the new library?*



Mayor Michelle Wu

SASAKI



City of Boston  
Public Facilities

# MORE TO SAY? MISSED THE MEETING?

What would make the design successful?

Three ways to share your thoughts:

1. Please visit <https://www.bpl.org/egleston-square-project/> to leave a comment.
2. Please [visit the branch](#) to write or draw your ideas on a postcard!
3. Please e-mail Priscilla Foley, Director of Neighborhood Services, Boston Public Library: [pfoley@bpl.org](mailto:pfoley@bpl.org)



Mayor Michelle Wu

SASAKI



City of Boston  
Public Facilities