



SOUTH END BRANCH LIBRARY

Community Meeting #4

December 4, 2024



Mayor Michelle Wu



utile

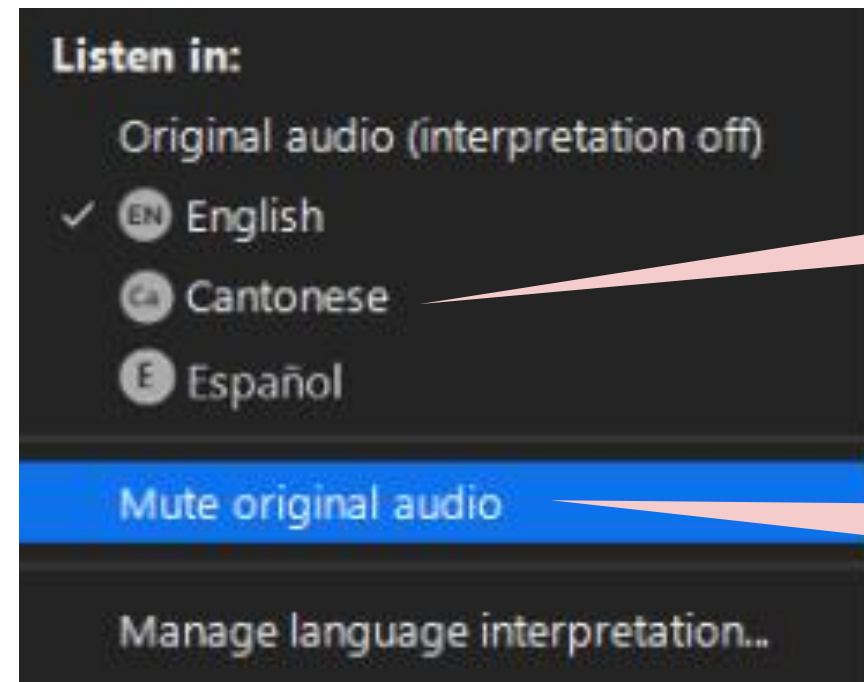


City of Boston
Public Facilities

TRANSLATIONS

Translations for this meeting are available live in the following languages:

Chinese (Cantonese)
Spanish (Español)



Select the language you would like to hear the presentation in

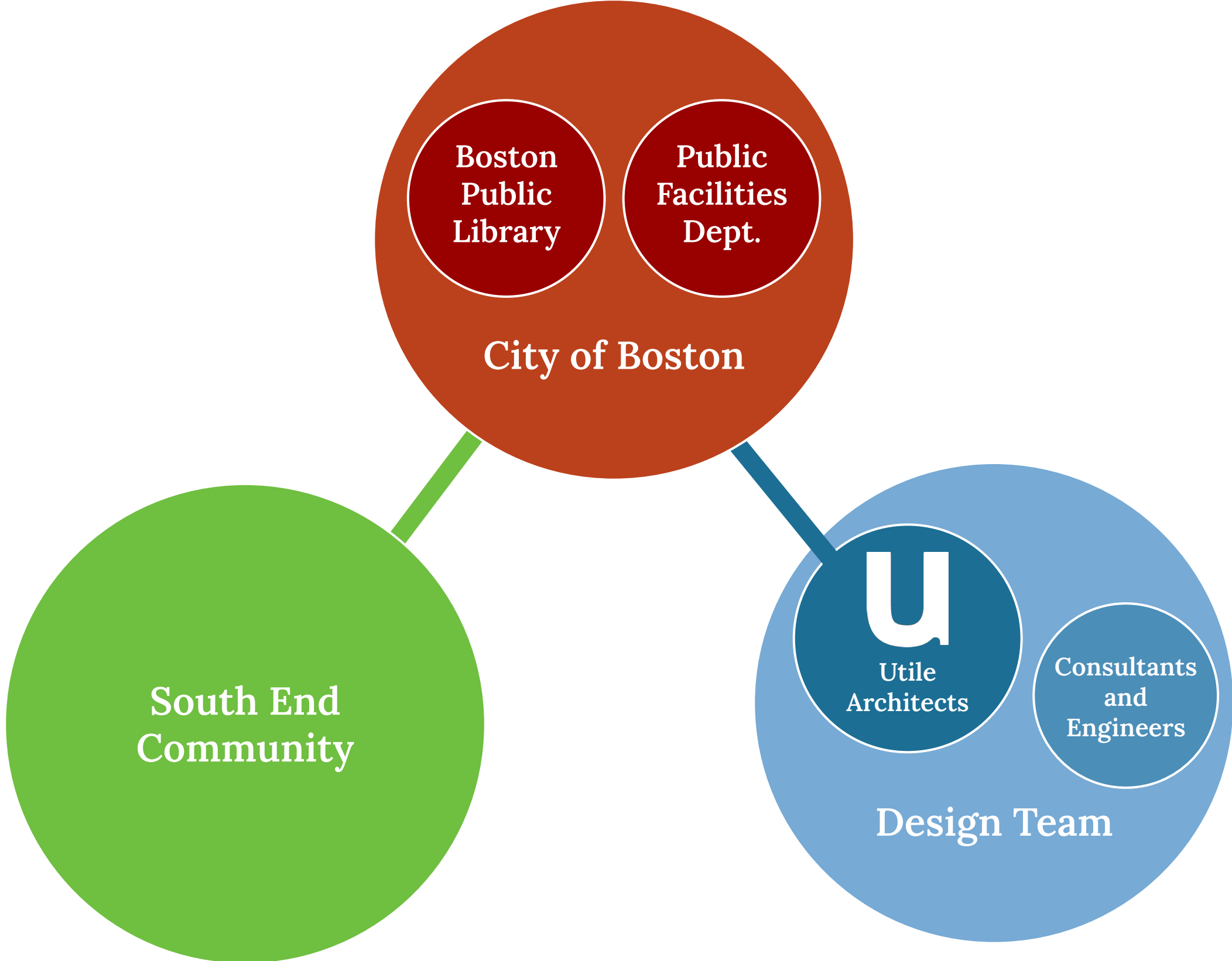
Select mute original audio to only hear your selected language channel

AGENDA

Community Meeting #4
December 4, 2024

1. Introductions
2. Schedule and Process
3. Community Meeting Recap
4. Landscape Improvements and Shadow Studies
5. Floor Plans
6. Sustainability Initiatives
7. Next Steps
8. Q&A Discussion

PROJECT TEAM



ACCELERATED PROJECT SCHEDULE



Community Input

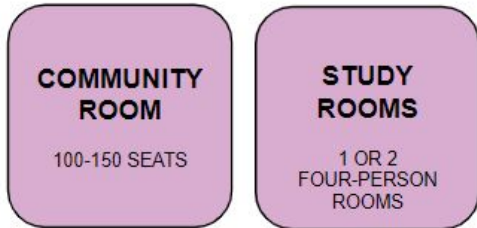
- Community Meeting #1
Jan 8, 2024
- Community Meeting #2
Feb 12, 2024
- Community Meeting #3
June 12, 2024
- Community Meeting #4
Dec 4, 2024
- Future Community Meeting
TBD in 2024

COMMUNITY MEETING RECAP



COMMUNITY MEETING #1 SUMMARY

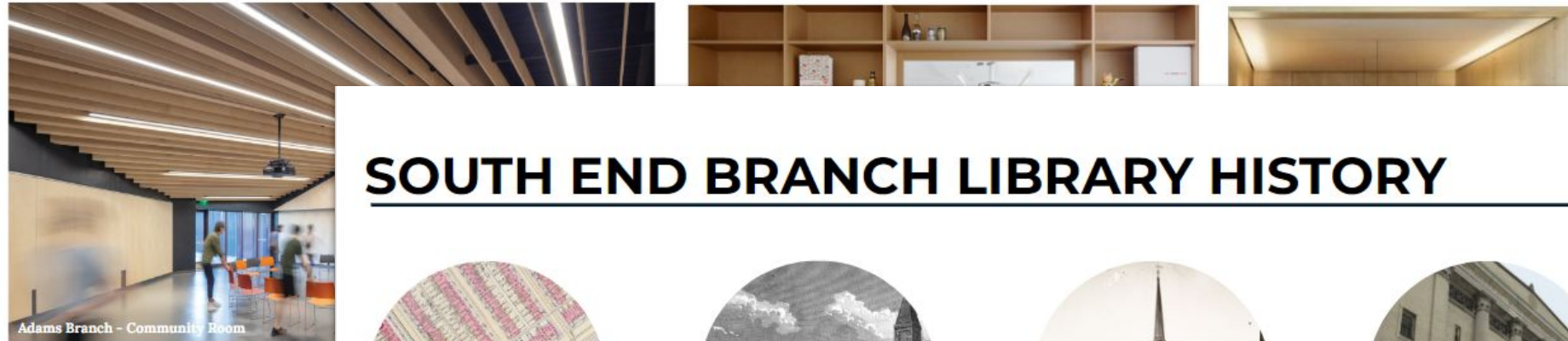
CORE BRANCH LIBRARY BUILDING PROGRAM



Meeting and Study Spaces

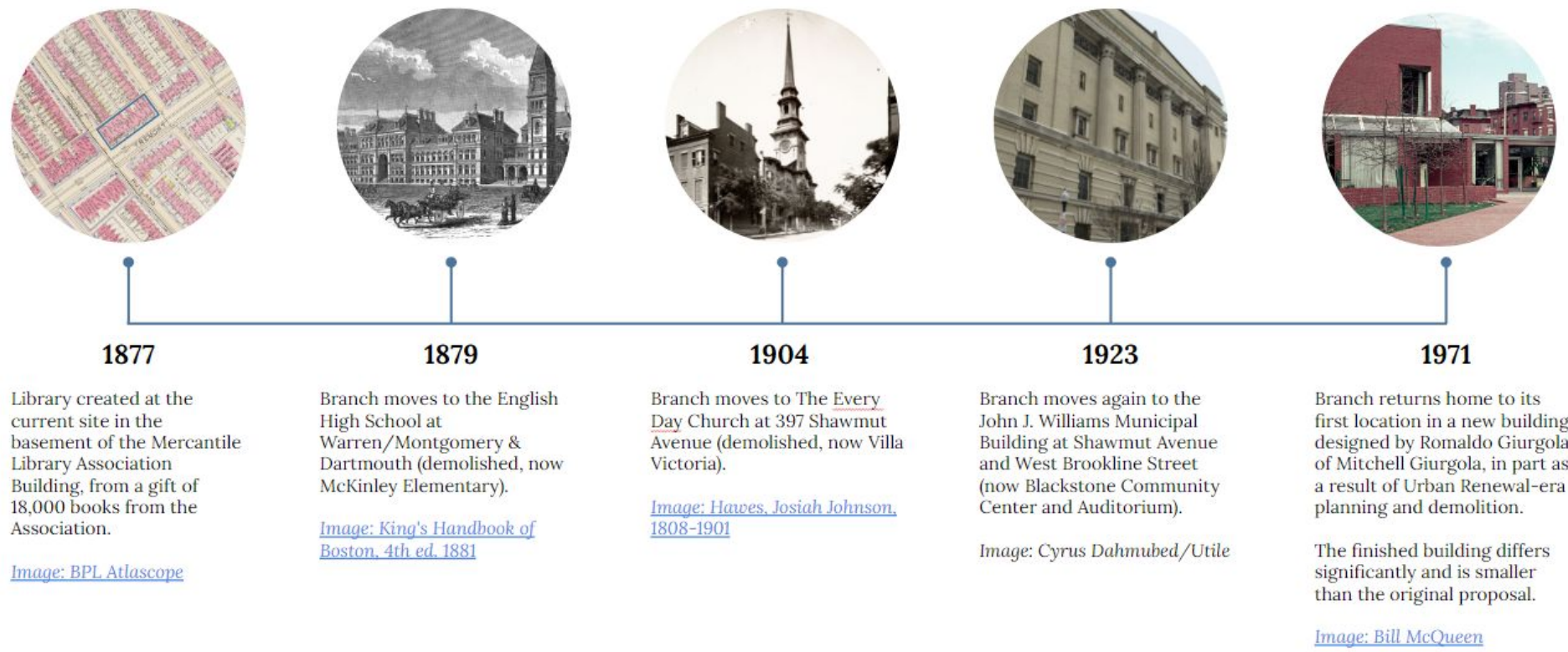


- Overview of engagement process and timeline
- History of the branch location and current building design
- Core branch library program review



Adams Branch - Community Room

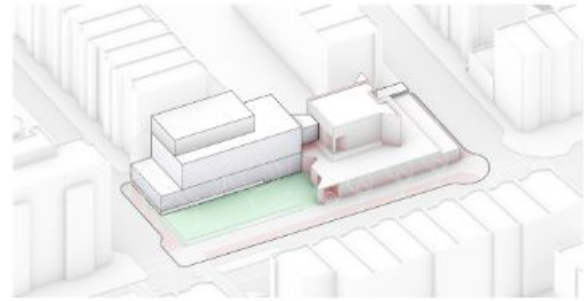
SOUTH END BRANCH LIBRARY HISTORY



COMMUNITY MEETING #2 SUMMARY

SUMMARY

Renovation + Addition - 17,100 SF



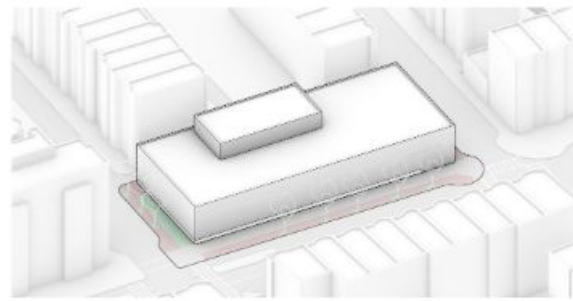
Opportunities:

- Preserves the existing building shape and facades along Tremont and West Newton Street
- Locates most (but not all) new construction above the floodplain

Constraints:

- The existing building and some new construction are in the floodplain
- Headroom in the first floor of the addition is limited (approximately 8 feet ceilings); ceilings in the existing building
- Costly interventions when adding onto existing building
- Approximately half of Library Park is lost, including several mature trees
- Entrance is set back from Tremont Street
- Preserves the blank facades along Tremont and West Newton Street
- May require a second elevator in addition to motorized lift
- Ground floor is oversized for Adult collection to accommodate other programs

New Construction One Story - 15,050 SF

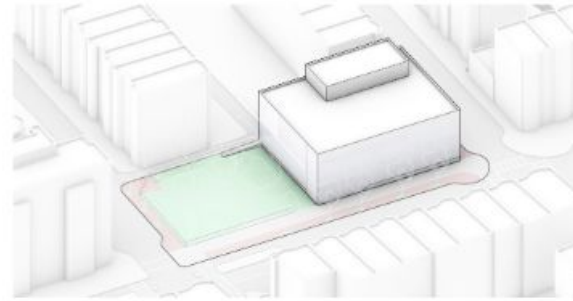


Opportunities:

- The main entrance is directly off of Tremont Street and West Newton Street
- All program areas are located above the floodplain
- All program areas are on one floor

Constraints:

New Construction Two Story - 15,845 SF



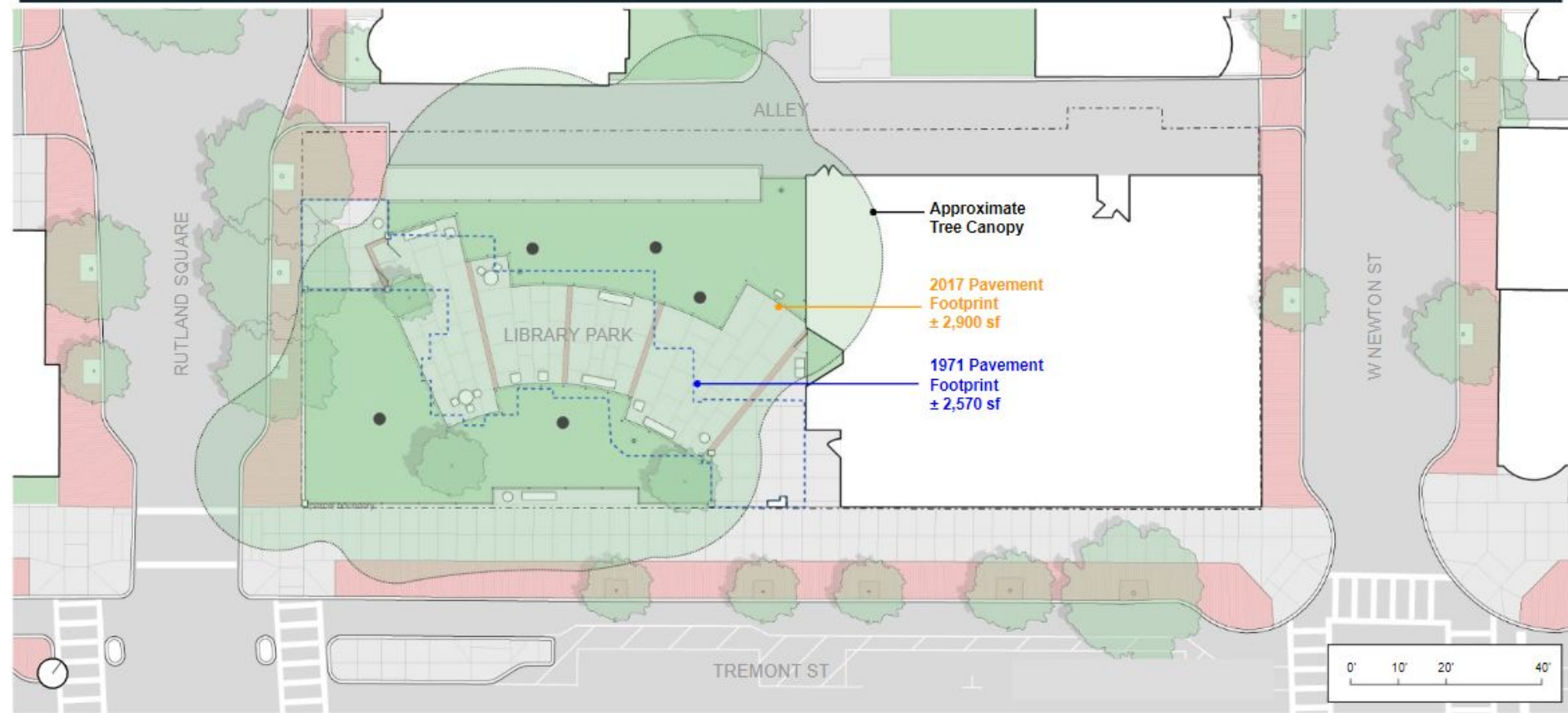
Opportunities:

- Maintains the majority of Library Park
- The main entrance is directly off of Tremont Street and Library Park
- All program areas are located above the floodplain

Constraints:

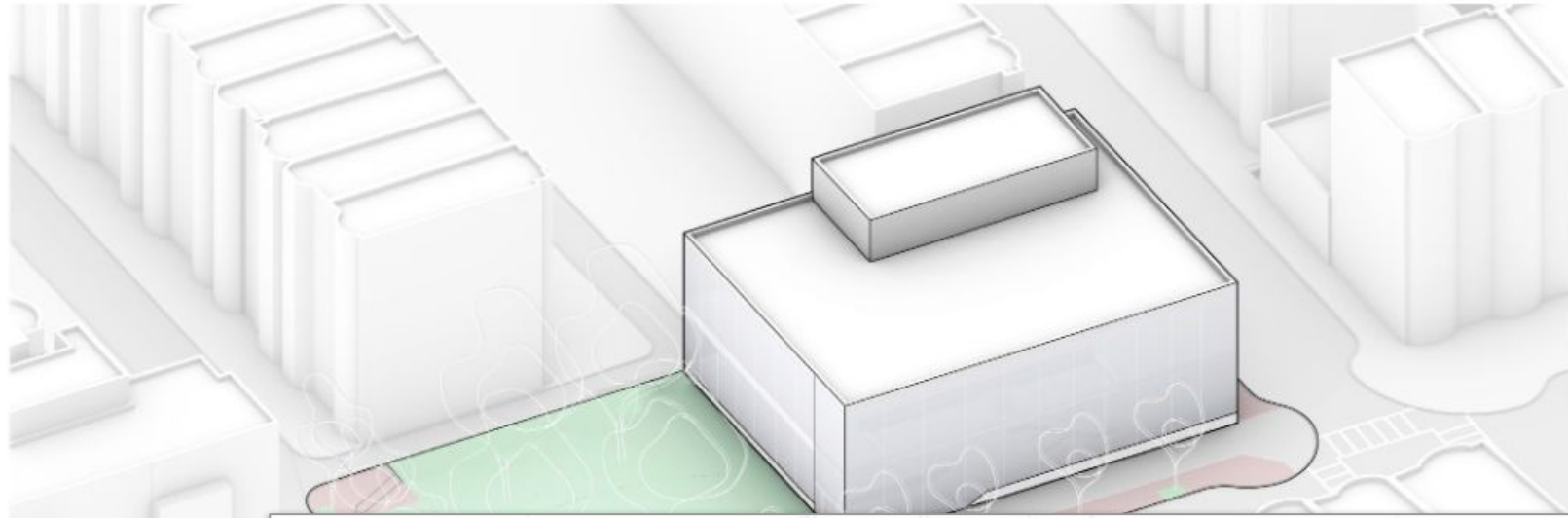
- Proposed South End Library building program
- Site Observations
- Test Fits

IMPACTS TO THE ADJACENT PARK AND TREES



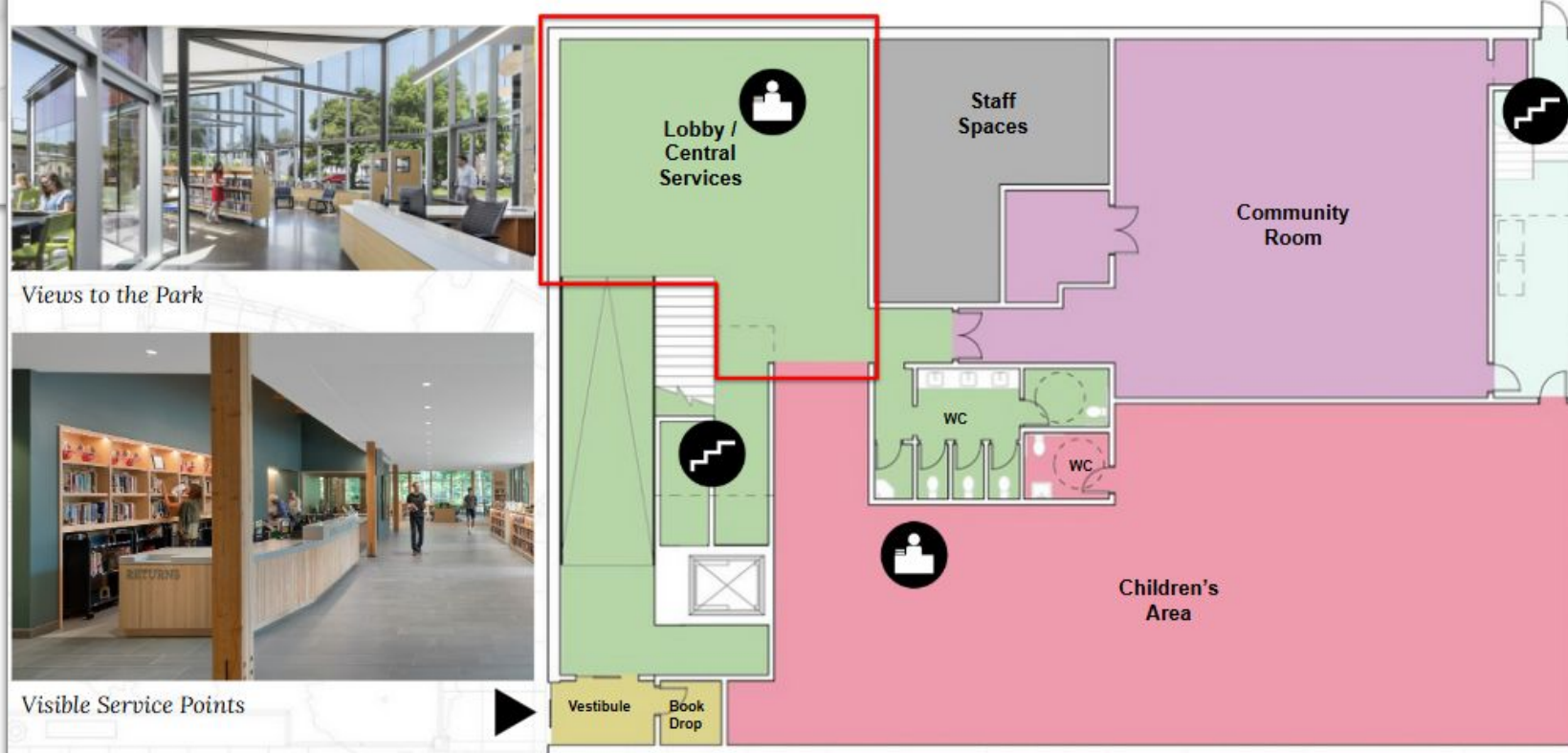
COMMUNITY MEETING #3 SUMMARY

MULTI STORY OPTION - MASSING



- Conceptual Layout of Building Program
- Space-by-space Review of Program
- Preliminary Massing

MULTI STORY OPTION - FIRST FLOOR CENTRAL SERVICES



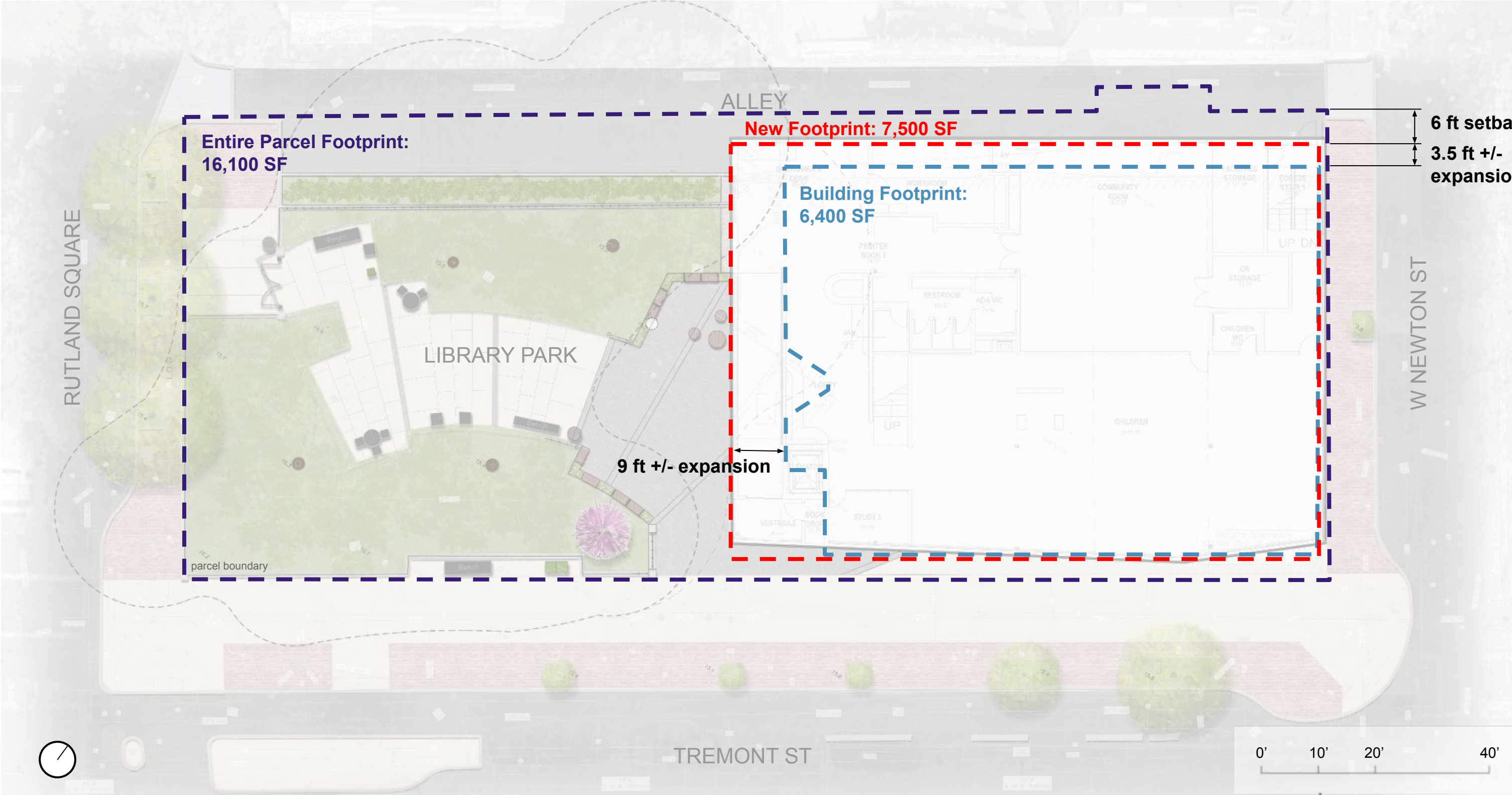
LANDSCAPE IMPROVEMENTS & SHADOW STUDIES



MULTI STORY OPTION - OVERALL FOOTPRINT

Library Park

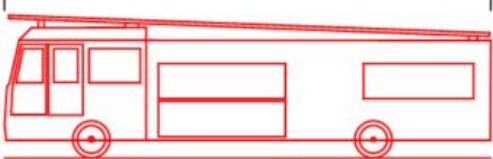
- 9 ft expansion into park



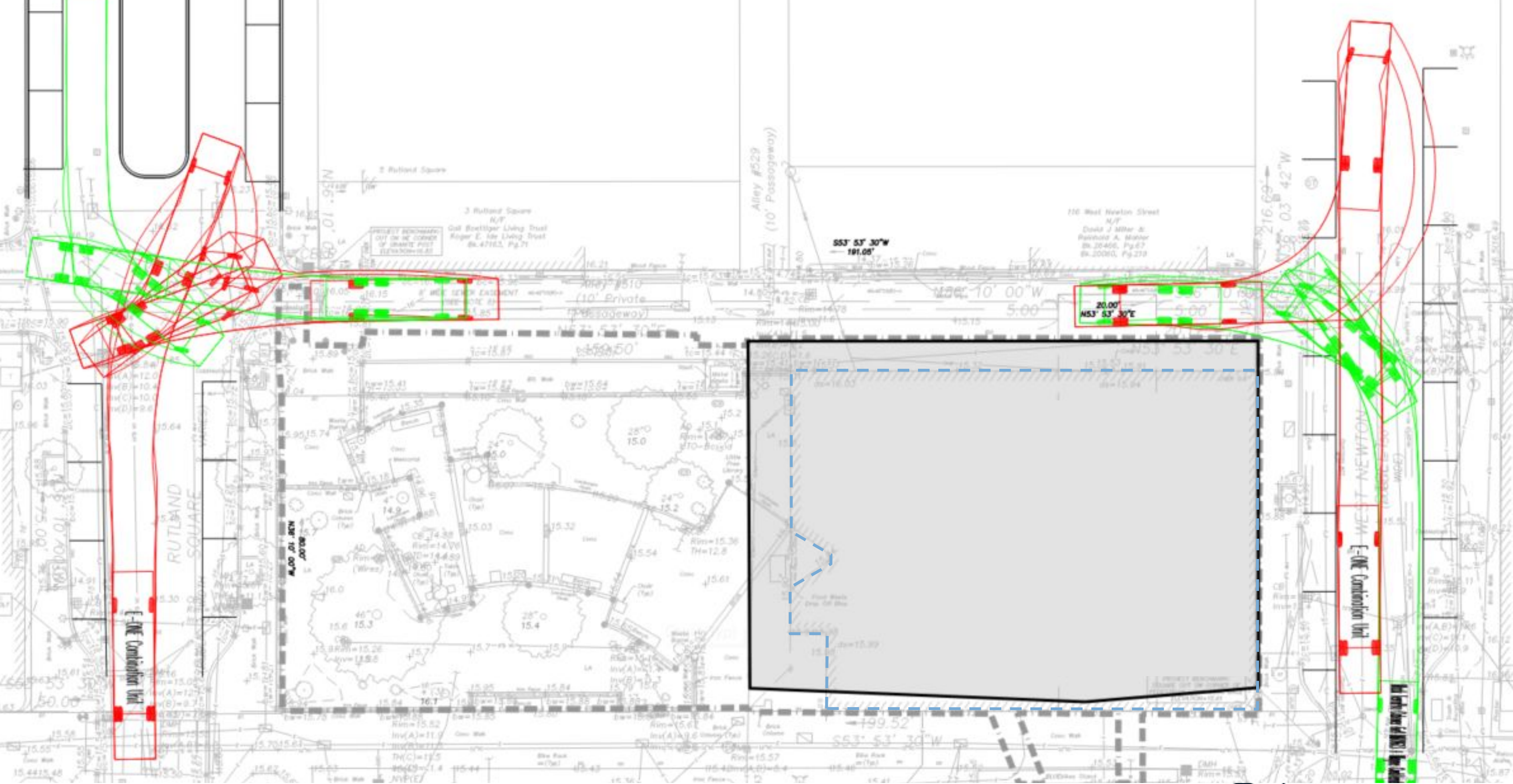
LARGE TRUCK TURNING DIAGRAM



Garbage Truck

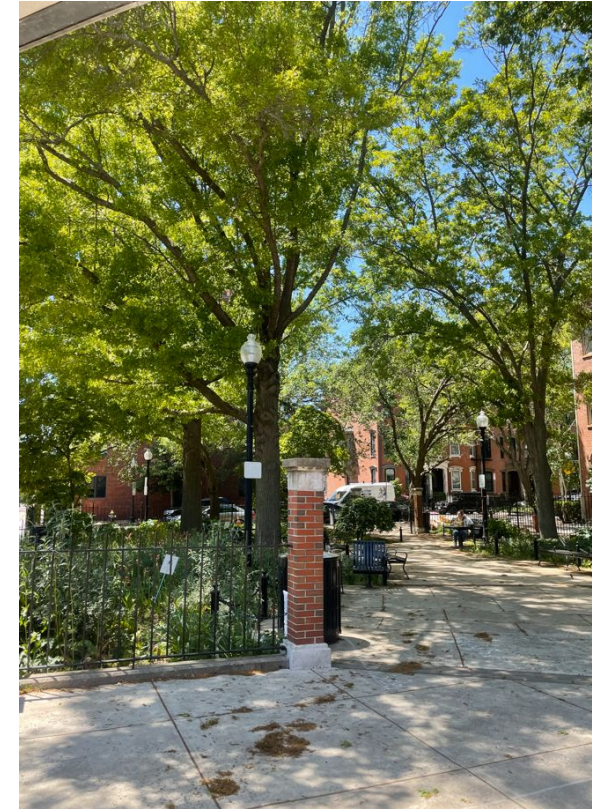


Fire Truck



LANDSCAPE SCOPE DESIGN DRIVERS

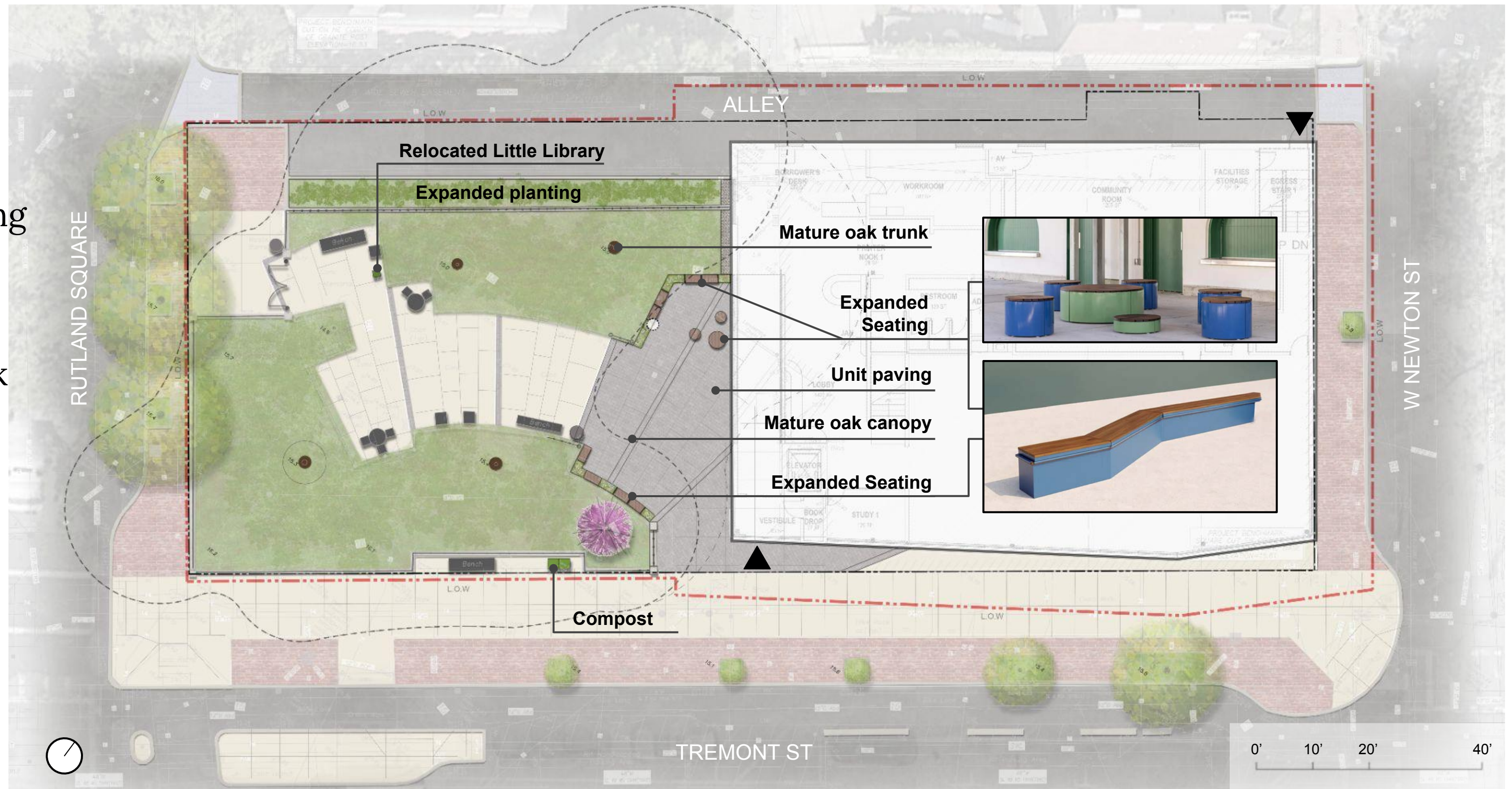
- Protection of mature trees
- Protection of existing vegetation
- Pedestrian connectivity through park
- Continuity in materials and design intent between existing and proposed
- Library and local programming
- Preserve fire and service access



LANDSCAPE PLAN

Library Park

- Minimal park intervention
- Expanded Seating
- Paving changes
- Magnolia at park entrance
- North planting adds 385 SF

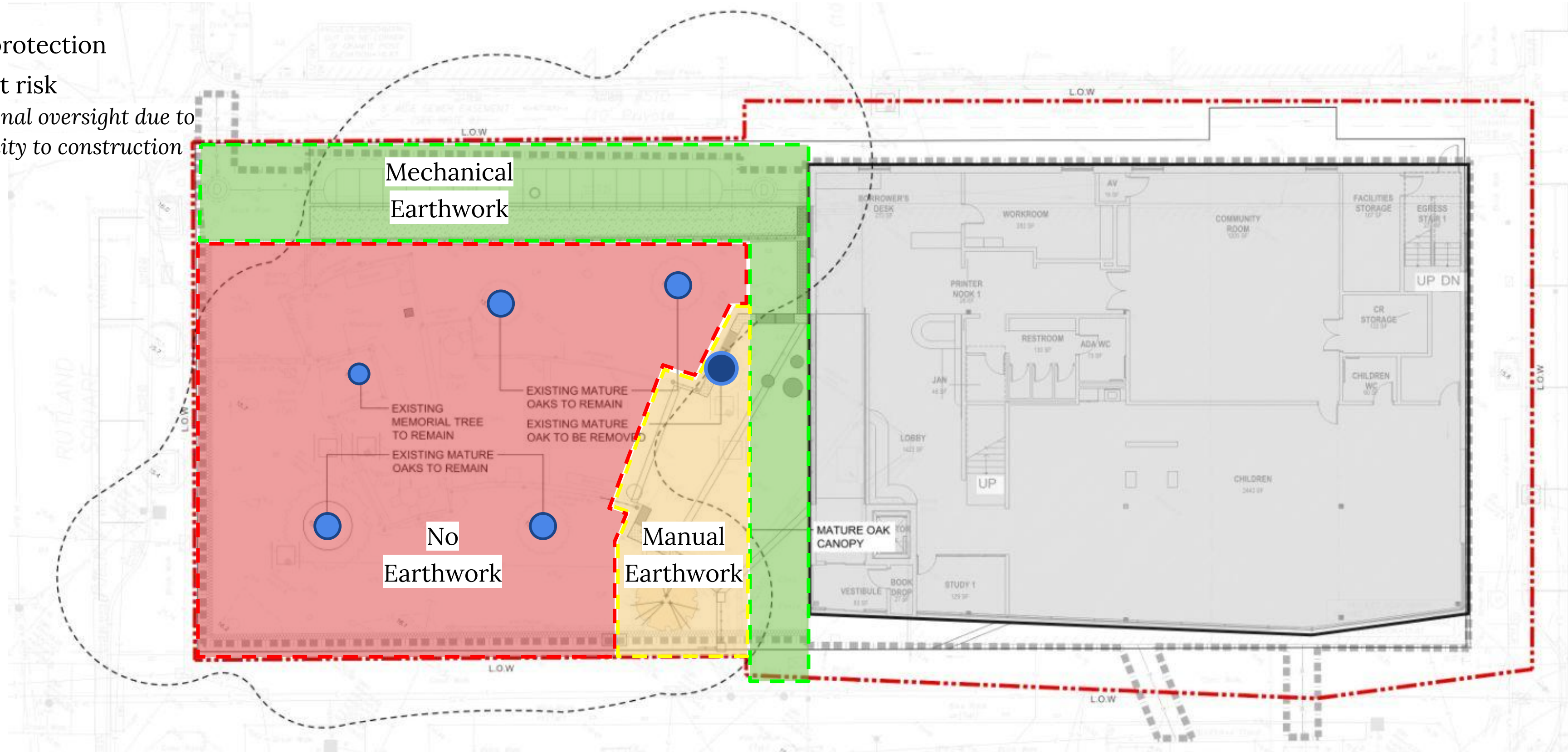


LIBRARY PARK TREE PROTECTION ZONES

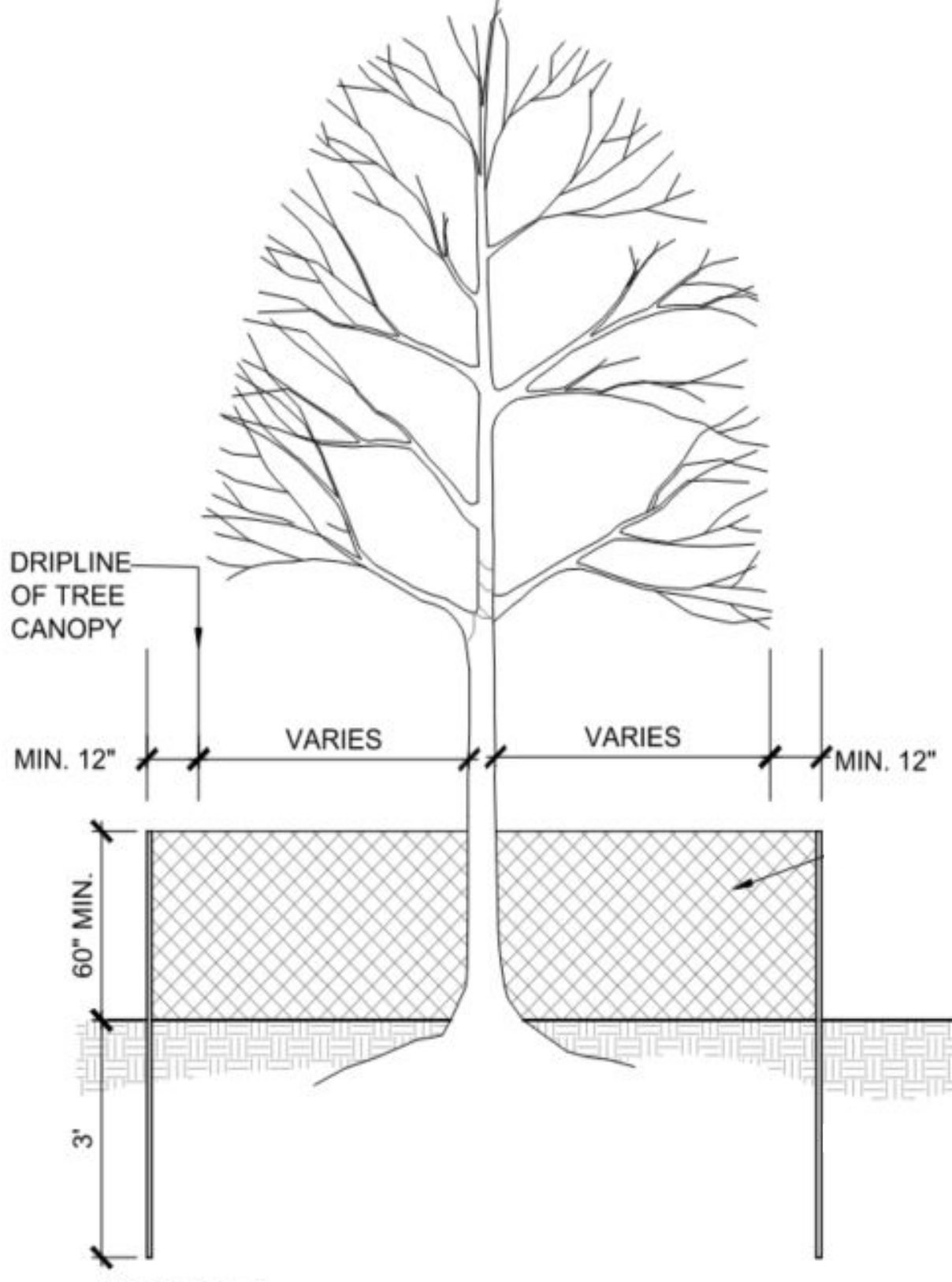
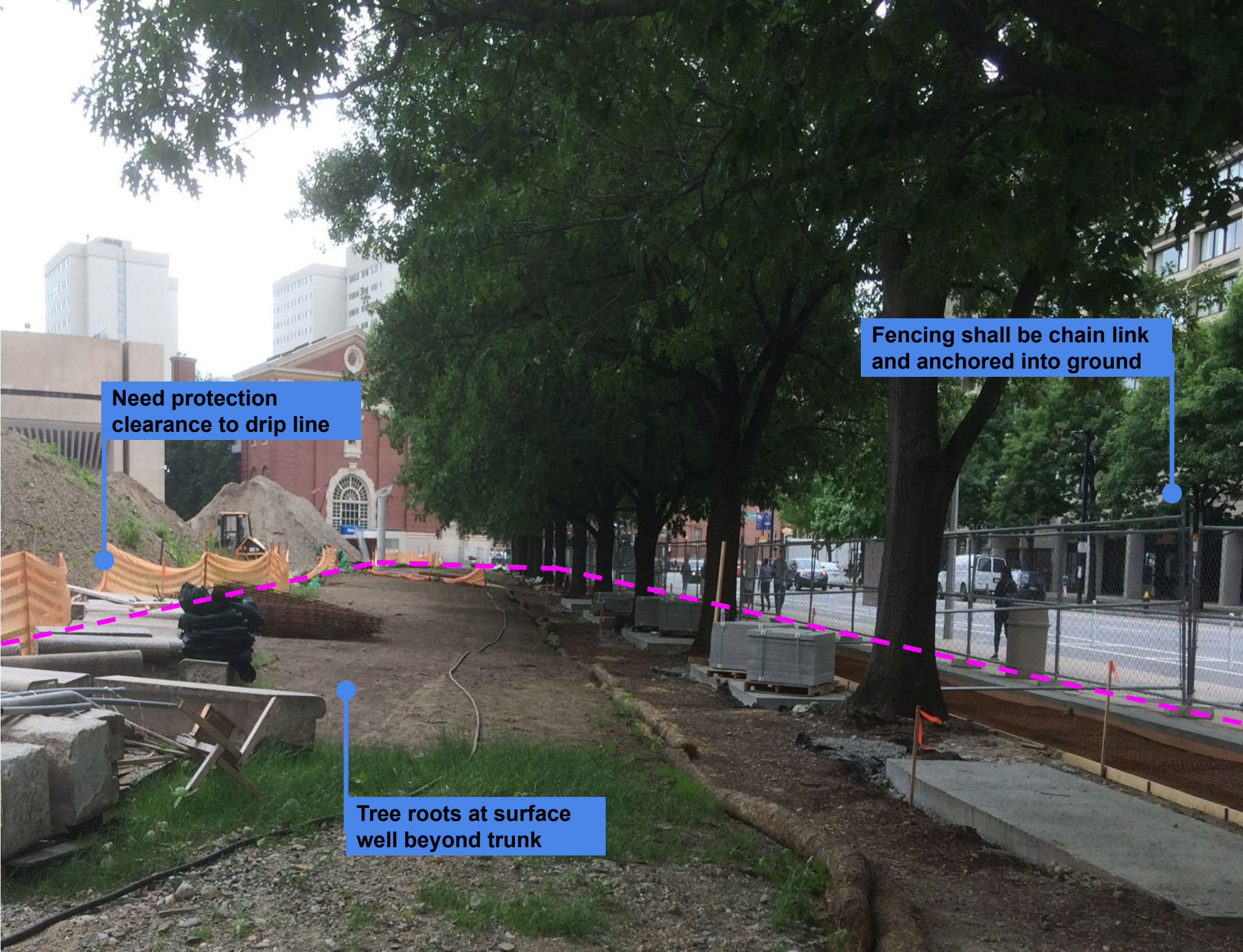
● Tree protection

● Tree at risk

Additional oversight due to proximity to construction

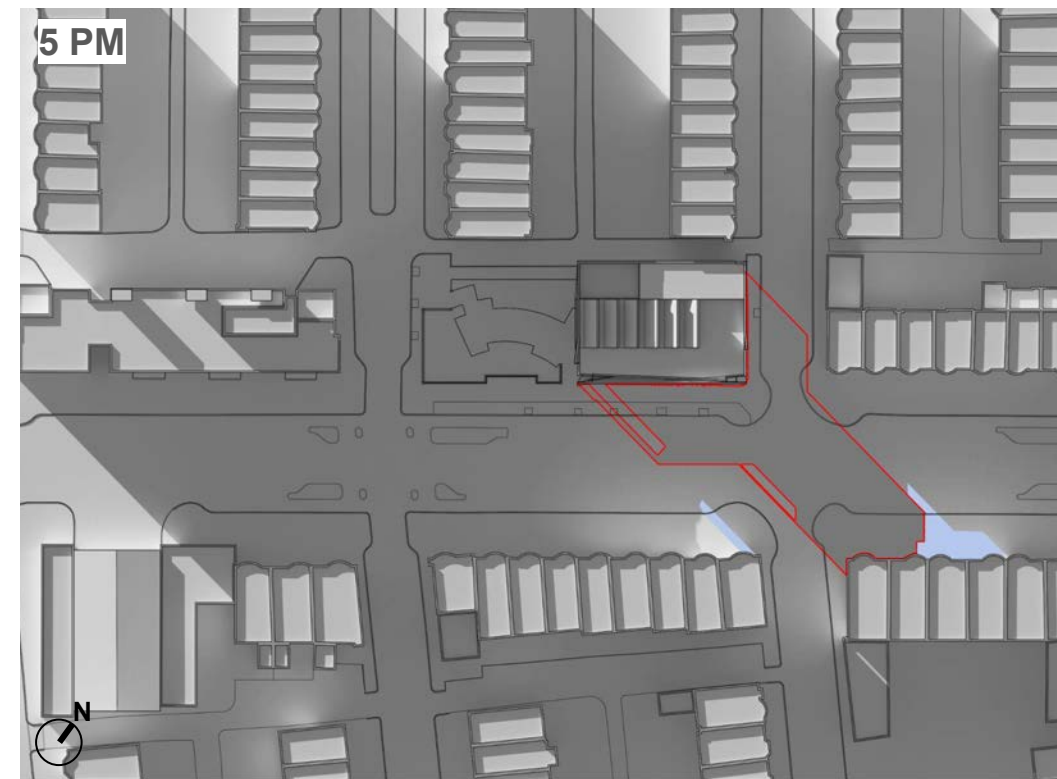
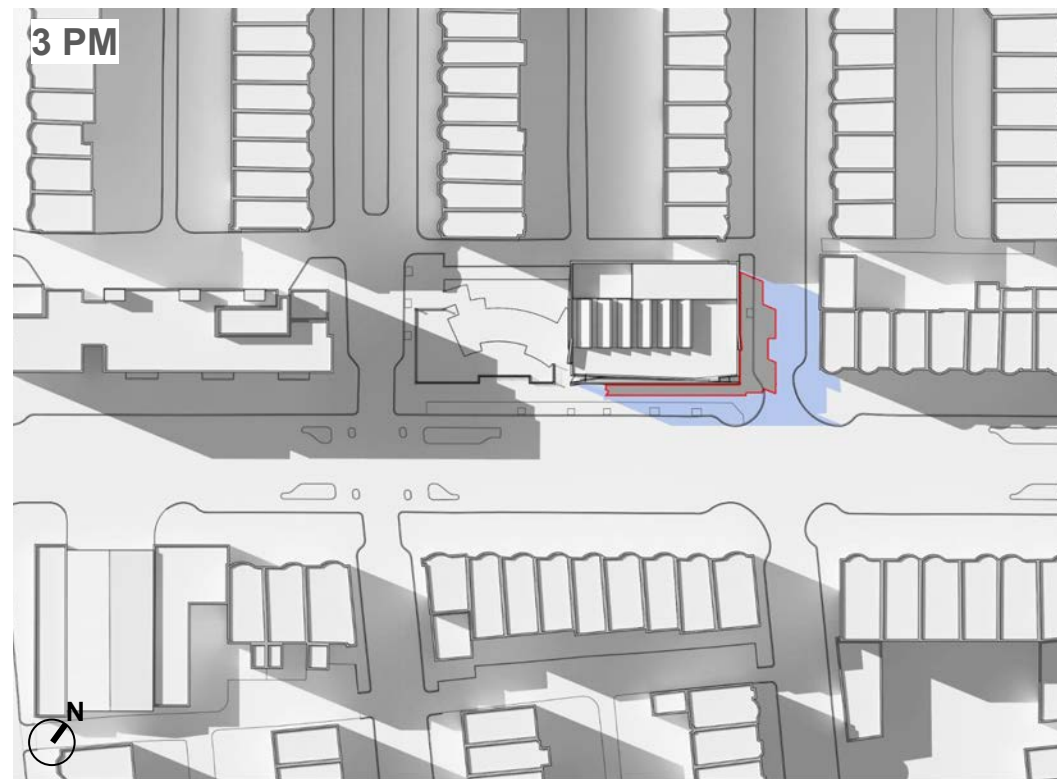
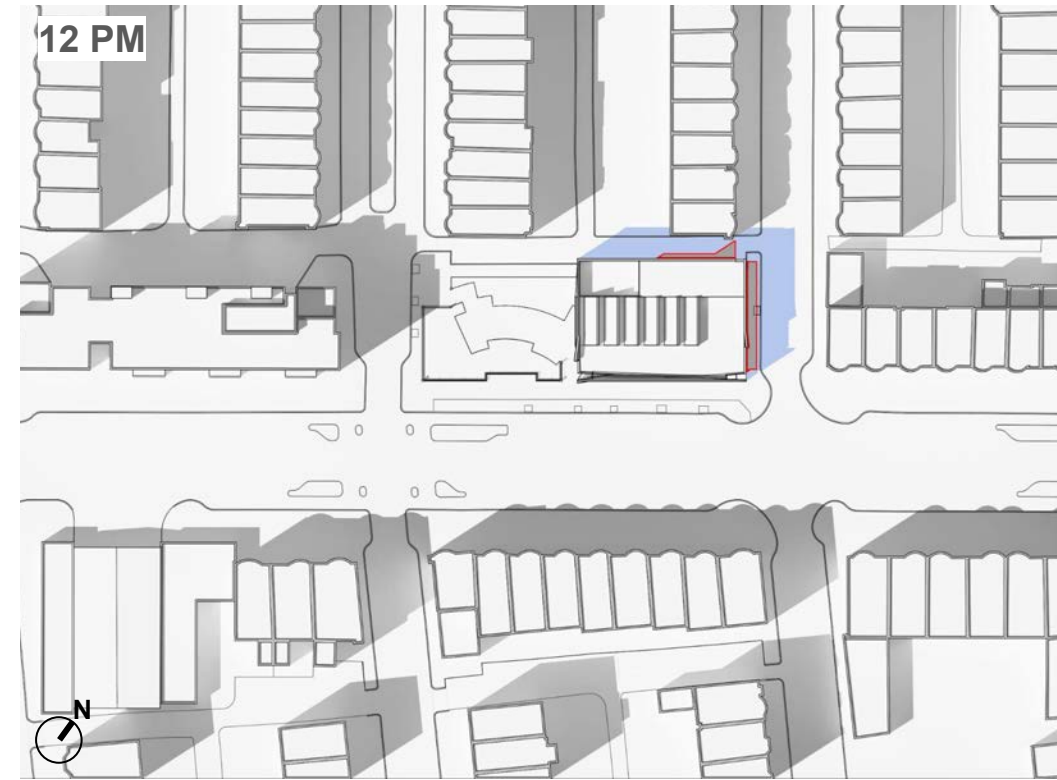


TREE PROTECTION MEASURES



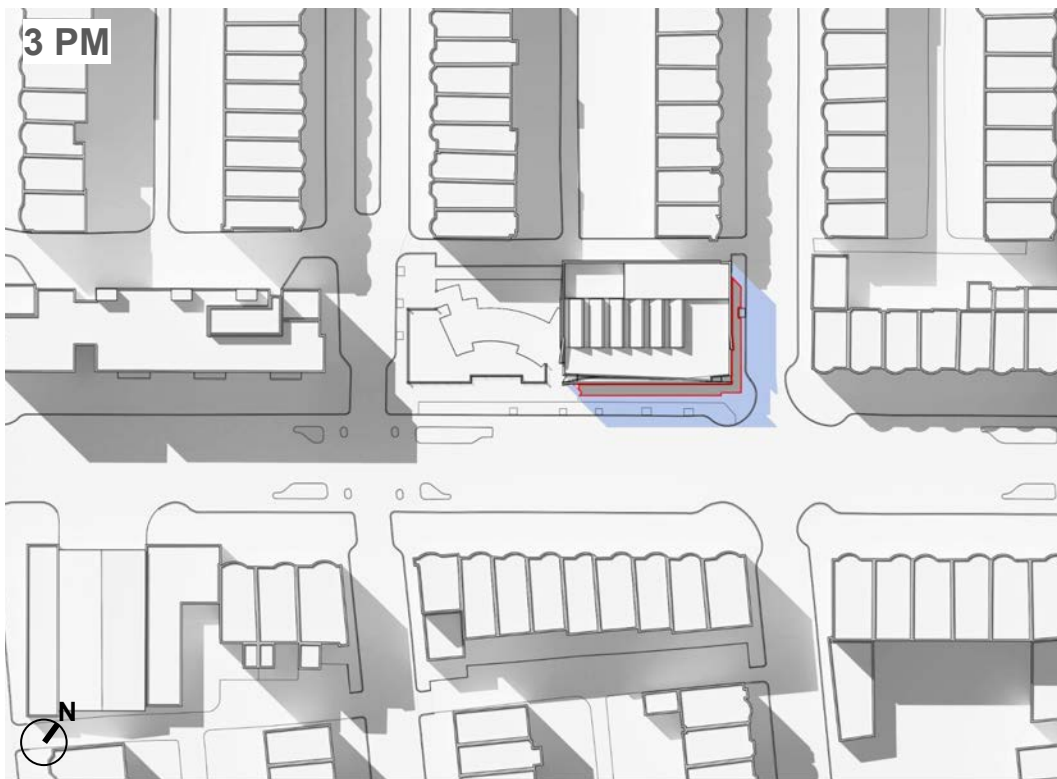
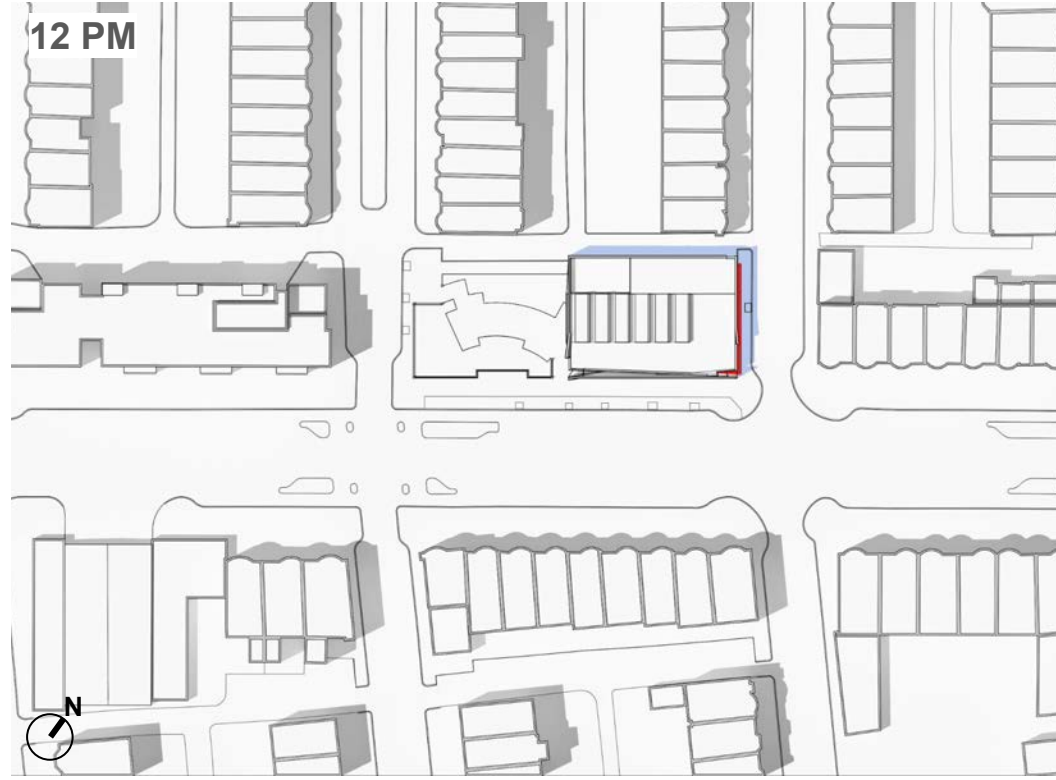
SHADOW STUDY - SPRING EQUINOX

- Shadow cast by the proposed Library
- Shadow cast by the existing Library



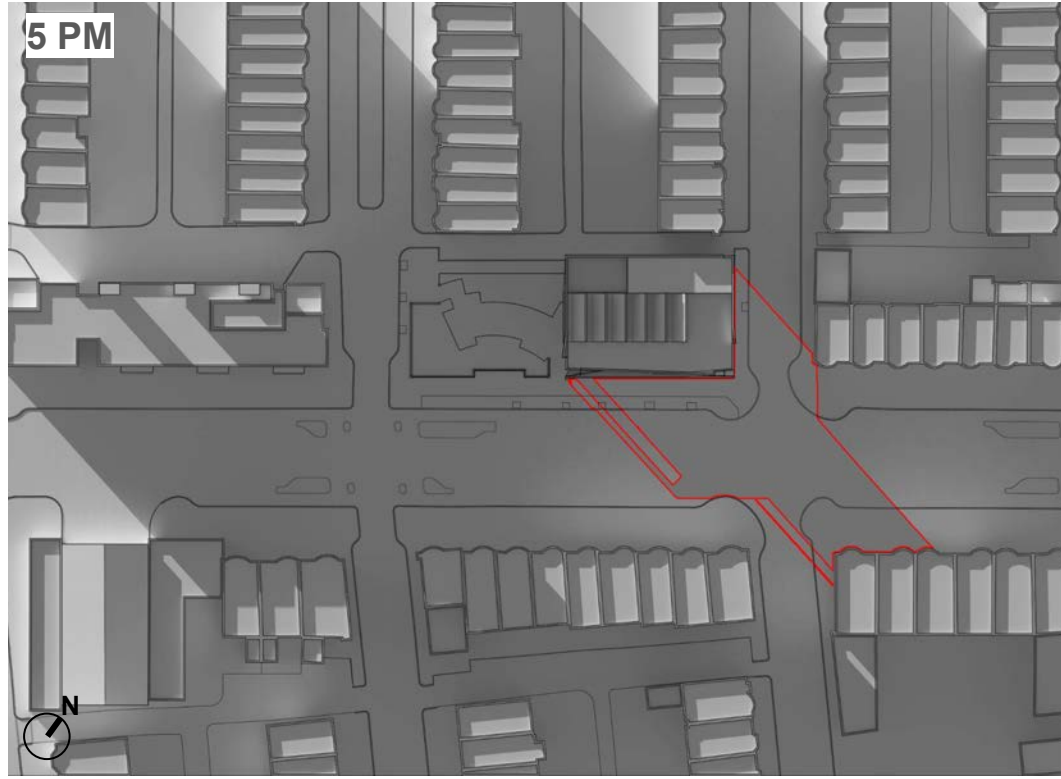
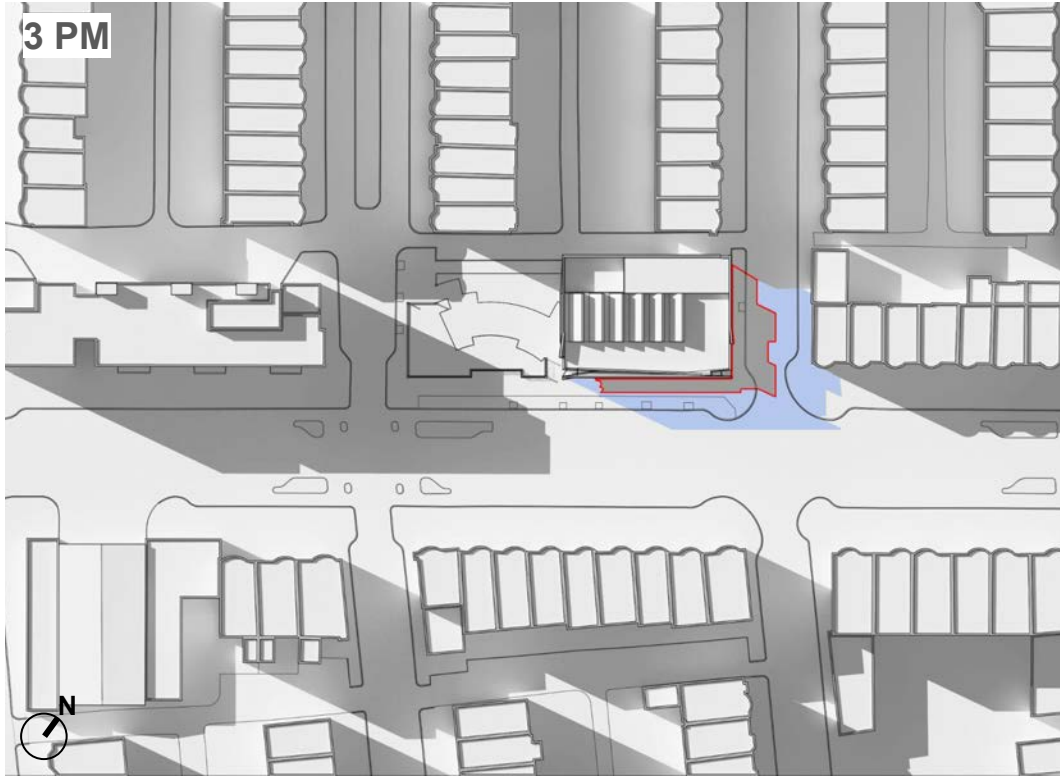
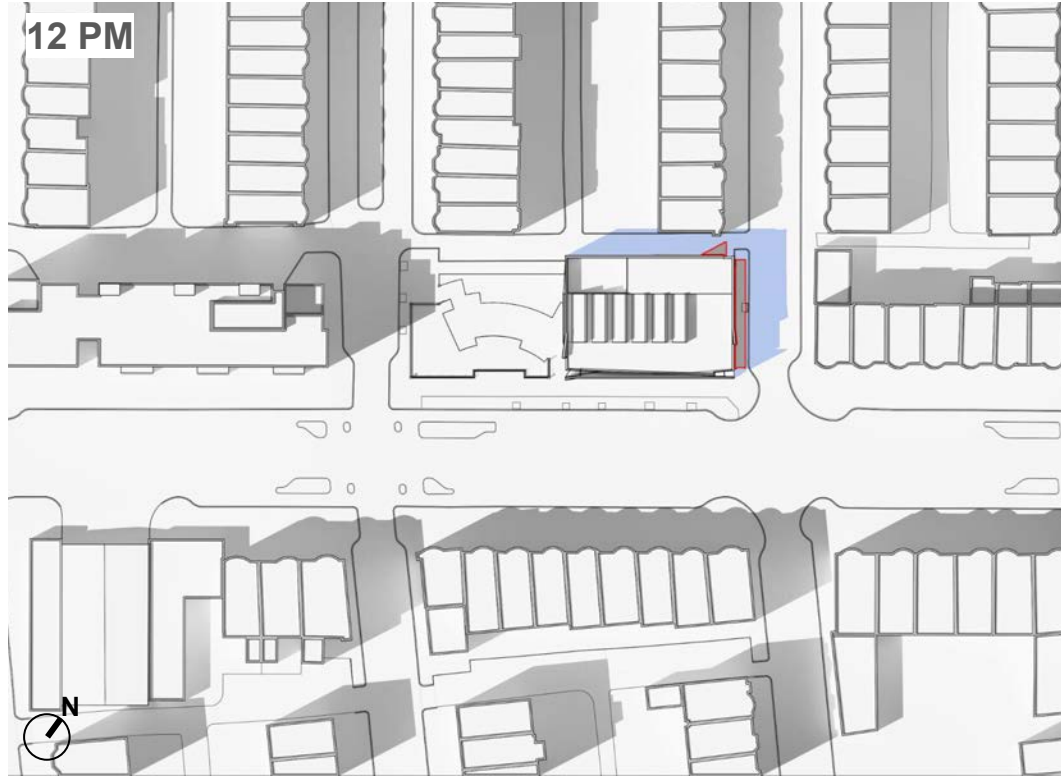
SHADOW STUDY - SUMMER SOLSTICE

- Shadow cast by the proposed Library
- Shadow cast by the existing Library



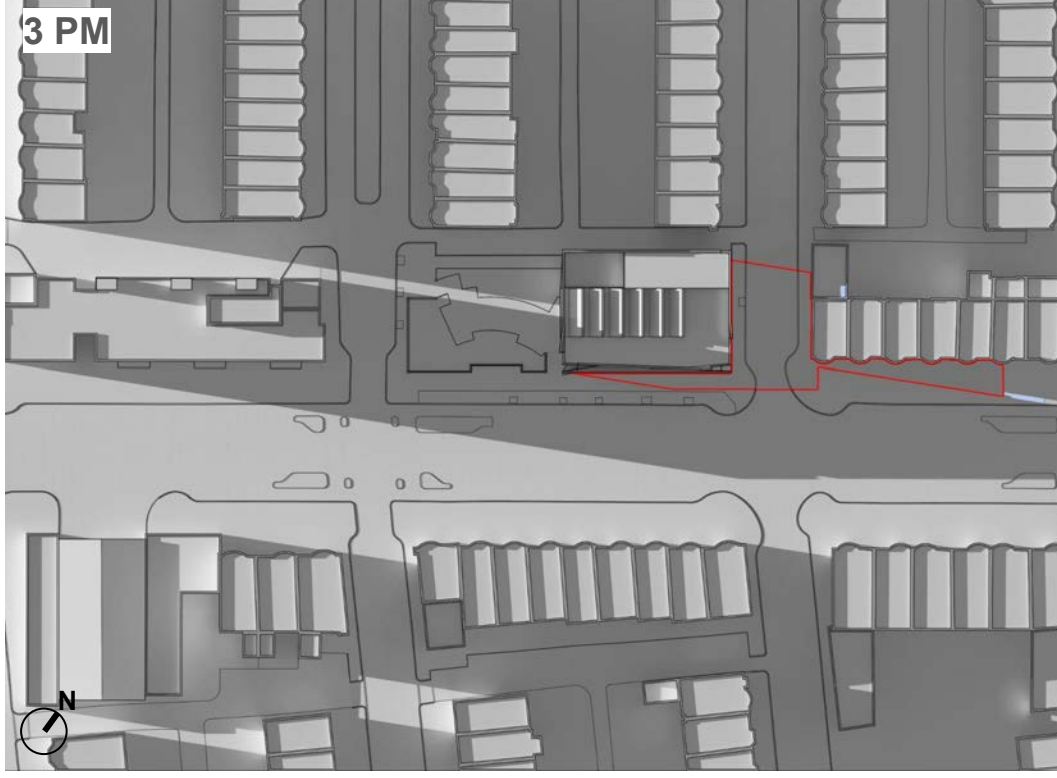
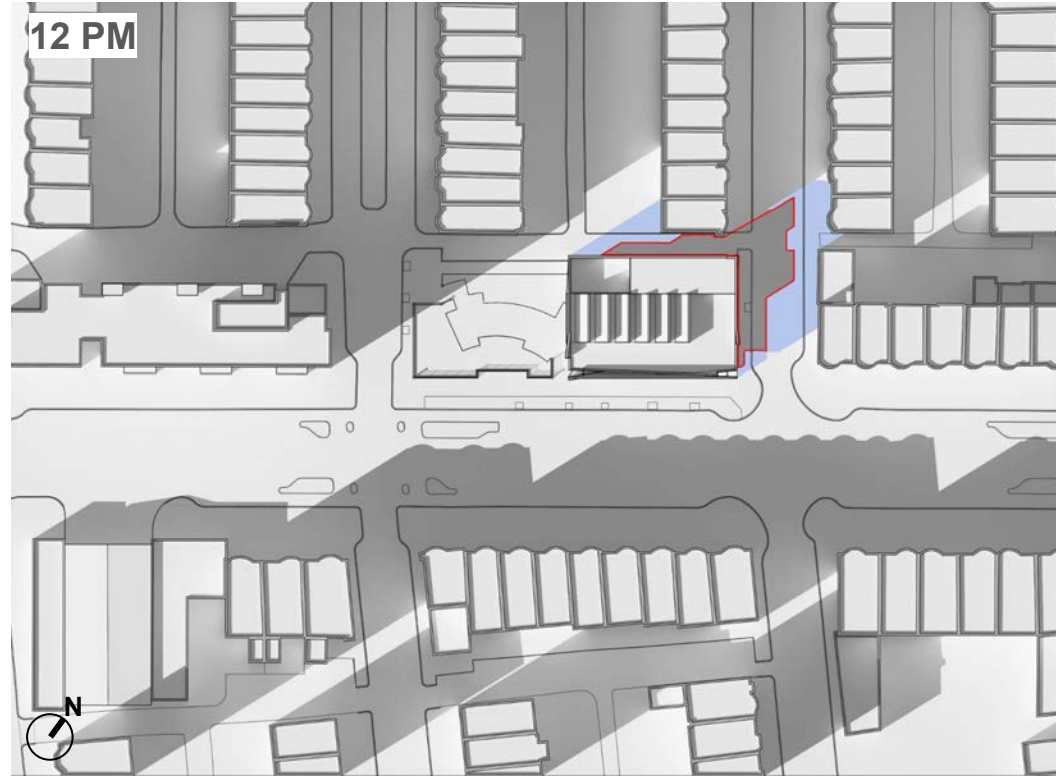
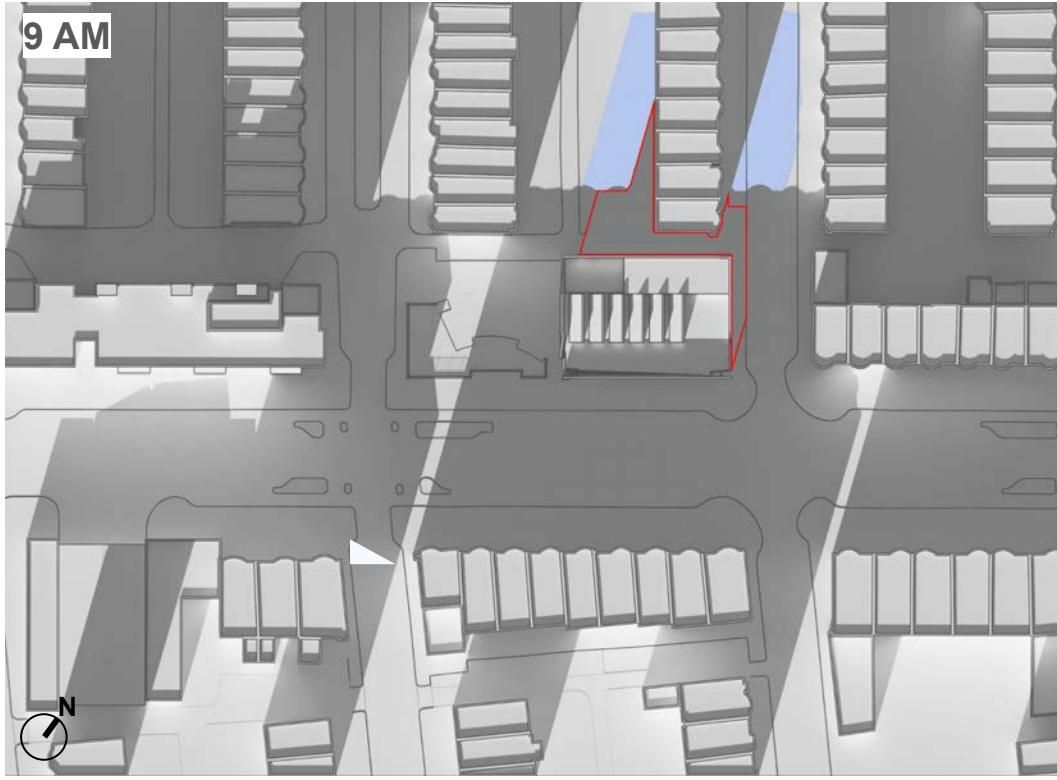
SHADOW STUDY - AUTUMN EQUINOX

- Shadow cast by the proposed Library
- Shadow cast by the existing Library



SHADOW STUDY - WINTER SOLSTICE

- Shadow cast by the proposed Library
- Shadow cast by the existing Library

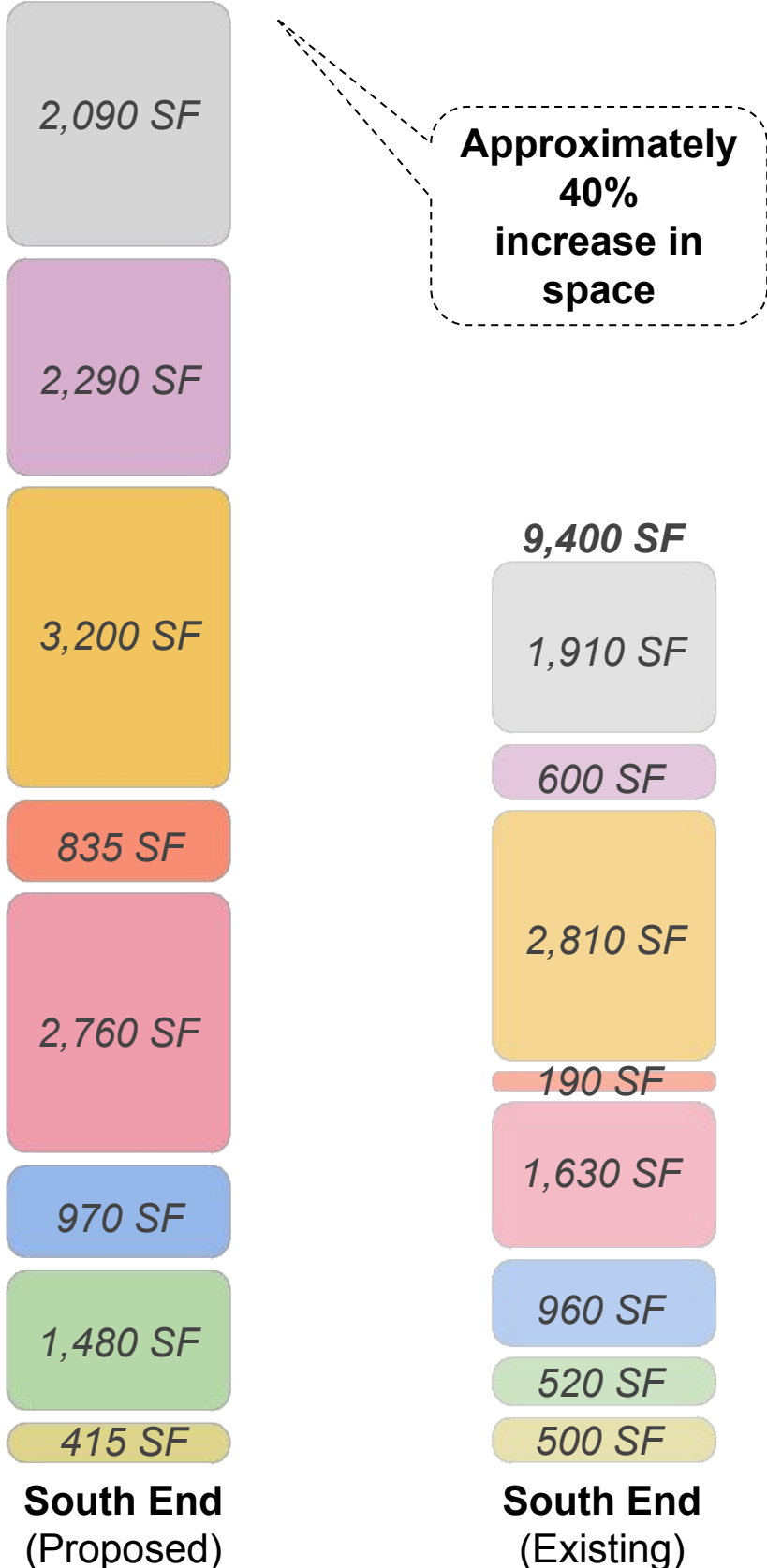


FLOOR PLANS



PROPOSED SOUTH END BUILDING PROGRAM

15,500-16,500 SF



Community - 2,290 SF

- Community Meeting Room, seating capacity of +/- 100
- Multi-purpose meeting room, 8-10 seats
- (2) Study rooms, 4-6 seats
- (1) "Phone room" nook, 1-2 person capacity

Adult Area - 3,200 SF

- 12,500 - 13,000 volumes
- 36 seats (33% increase)
- 12 computer stations
- Includes Local History

Teen Area - 835 SF

- 3,000 volumes
- 14 seats (200% increase)
- 4 computer stations

Children Area - 2,760 SF

- 13,250 - 13,750 volumes
- 36 seats (12.5% increase)
- 3 AWE computer stations
- Includes tweens area, story time area and crafts

Staff - 970 SF

- Work room, break room, staff restroom and storage
- Branch librarian's office

Central Services - 1,480 SF

- Borrower's desk
- Holds shelving, Friend's book sale, community bulletin board and display areas
- Restrooms

Entry - 415 SF

- Vestibule, lobby and book drop

Support - 2,090 SF

- Friend's and facilities storage
- Mechanical and electrical rooms

Grossing Factor (+/- 15%)

- Circulation between program areas and shaft spaces

TOTAL - 15,500-16,500 SF



City of Boston
Public Facilities

FIRST FLOOR PLAN

Children's Area

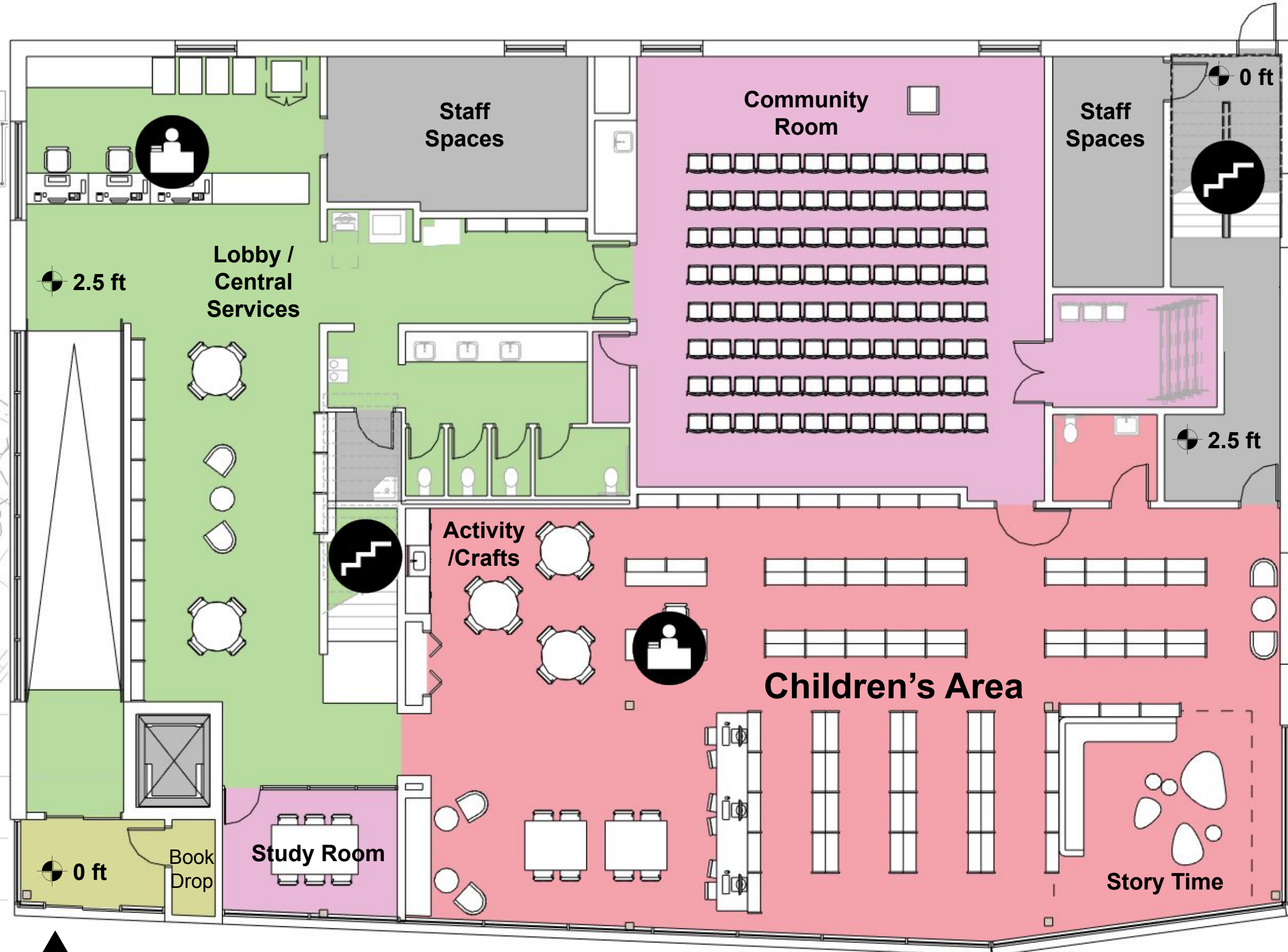
- 13,250 - 13,750 volumes
- 34 seats (6% increase)
- 3 AWE computer stations
- Includes tweens area, story time area and crafts

Community Room

- 104 seated capacity
- Adjacent to lobby and main entrance

Study Rooms

- Opportunities for larger study spaces



SECOND FLOOR PLAN

Teens Area

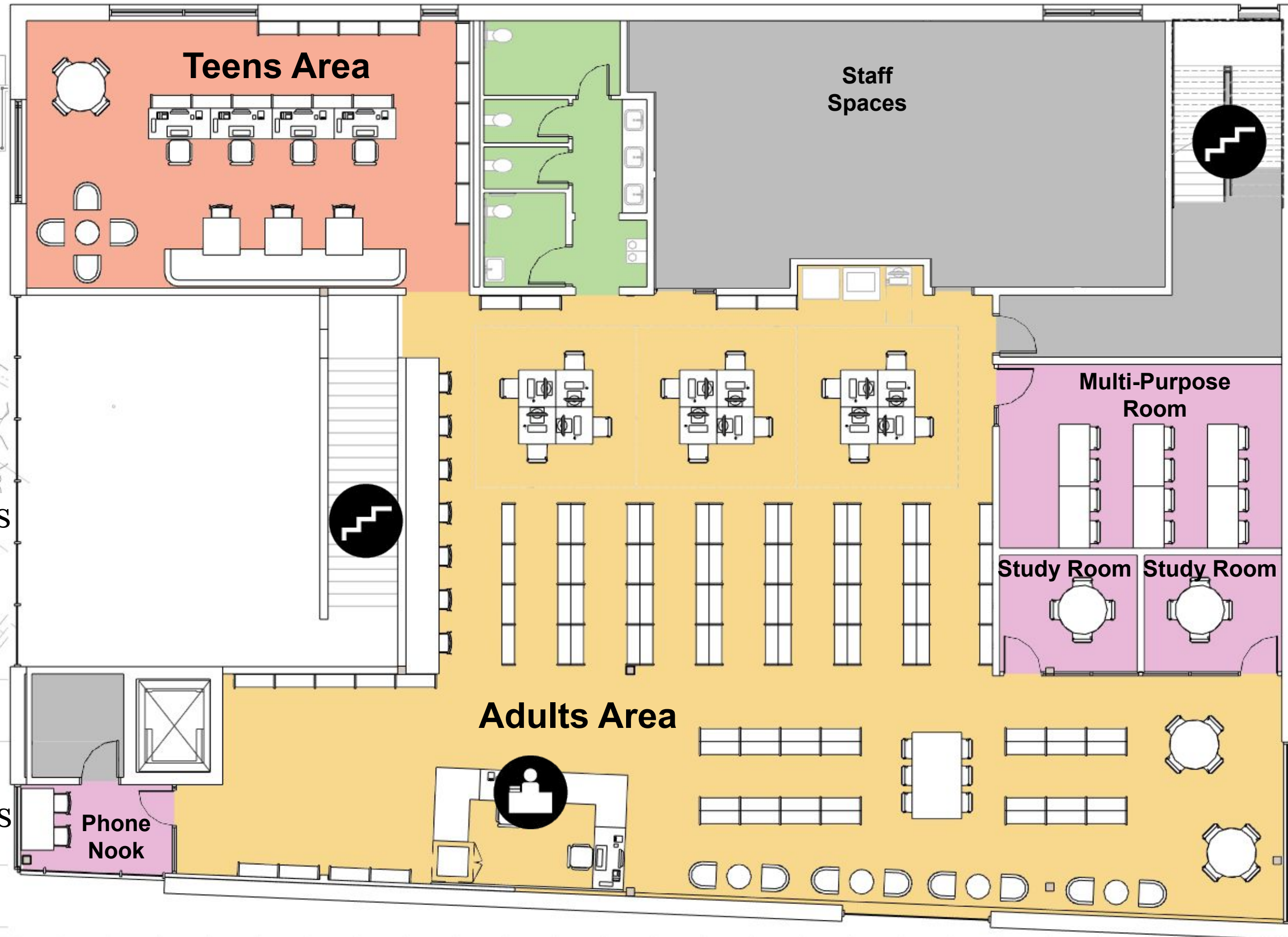
- 3,000 volumes
- 14 seats (200% increase)
- 4 computer stations

Adult Area

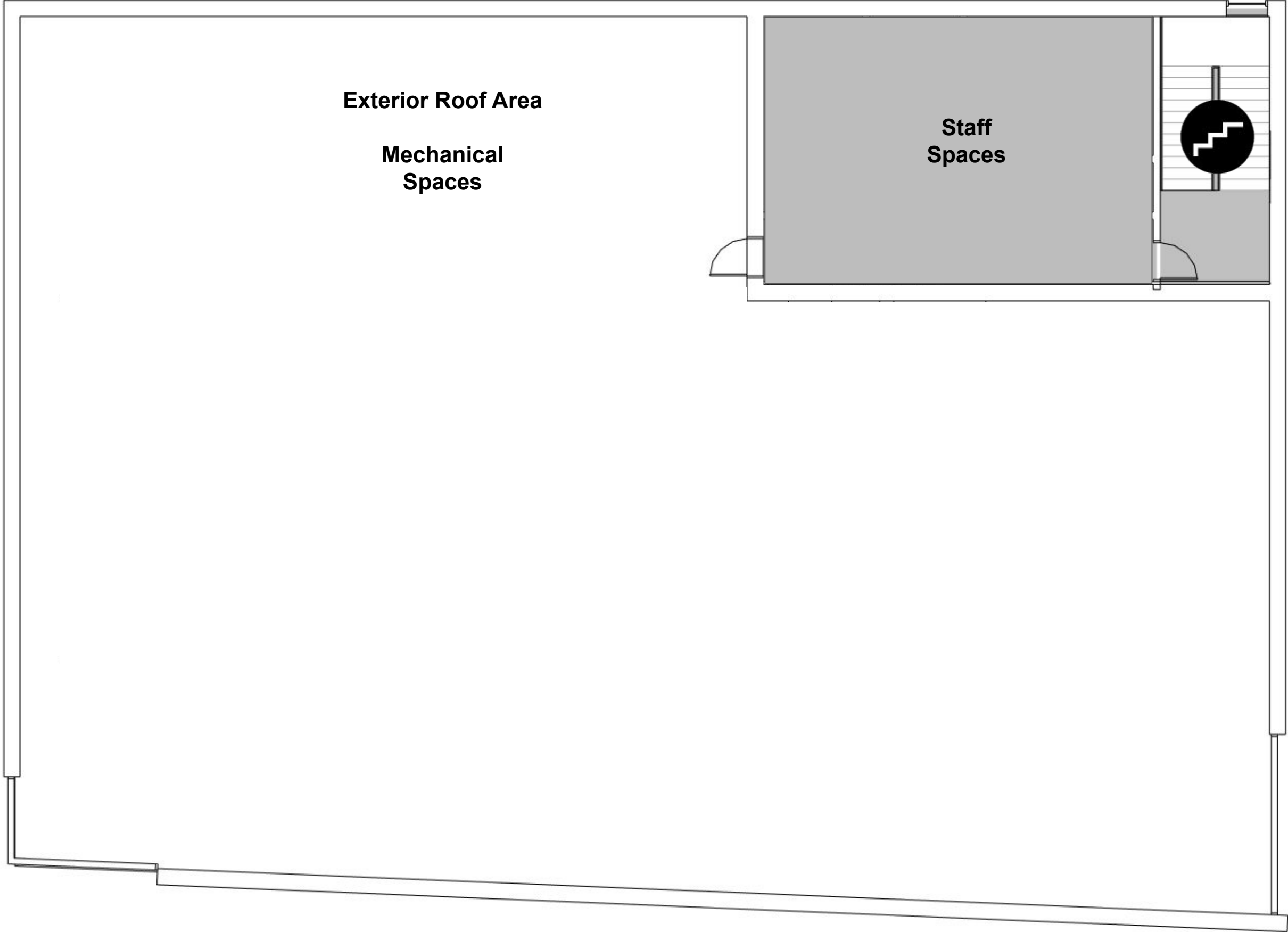
- 12,500 - 13,000 volumes
- 29 seats (8% increase)
- 12 computer stations
- Includes Local History

Study & Multi-Purpose Rooms

- Opportunities for multiple sized rooms



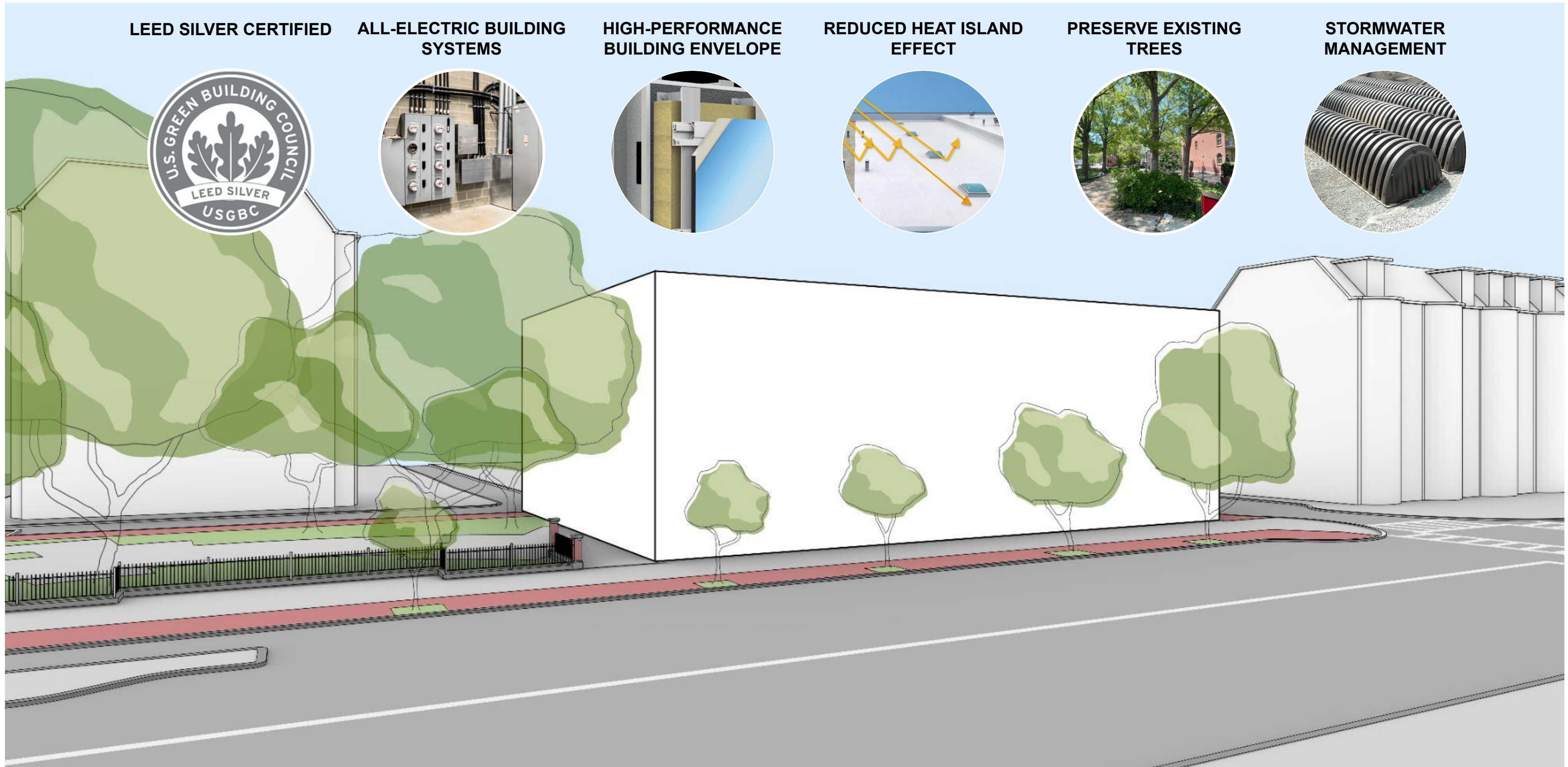
THIRD FLOOR/ROOF PLAN



SUSTAINABILITY INITIATIVES



SUSTAINABILITY



NEXT STEPS



COMMUNITY INPUT

We are here



Community Meeting #1
Jan 8, 2024

Preliminary existing conditions report

Present typical BPL Branch Library building program

Understand community needs for South End Branch

Community Meeting #2
Feb 12, 2024

Update on existing conditions findings

Develop preliminary South End Branch building program

Present preliminary test-fits of program in renovation and new construction options

Community Meeting #3
Jun 12, 2024

Finalize Branch building program

Update test-fits based on feedback and study findings

Develop recommendation scheme for further design

Community Meeting #4
Dec 4, 2024

Landscape Improvements & Shadow Studies

Initial Floor Plans

Preliminary Massing & Exterior Materials

Sustainability

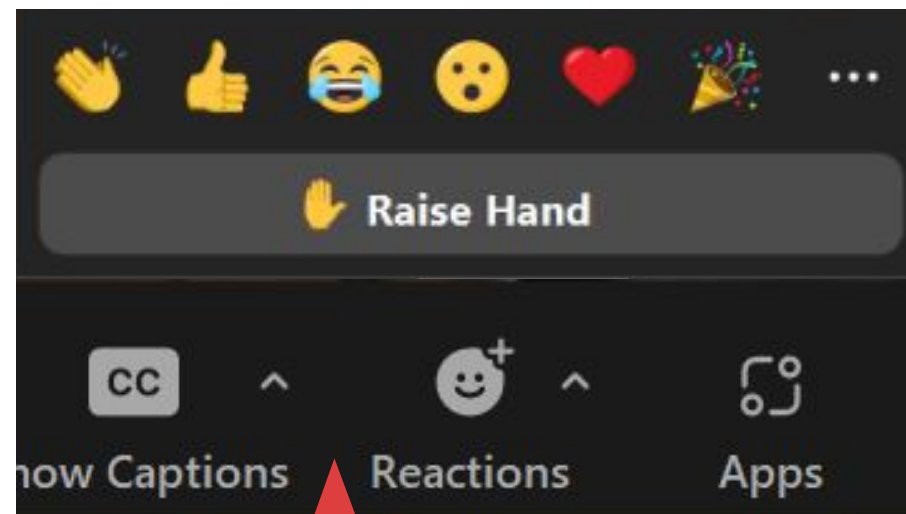
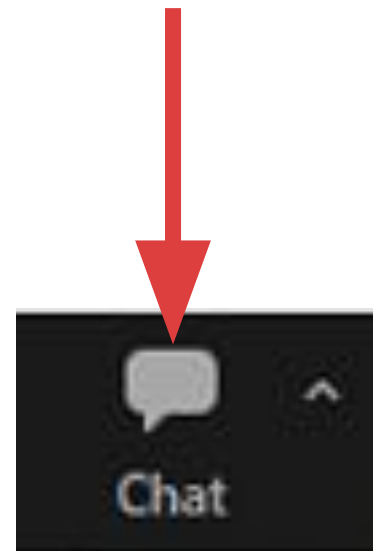
Future Community Meetings
TBD in 2025

QUESTIONS & COMMENTS?



QUESTIONS & COMMENTS

For written comments or questions:
Use the chat dialog box



To ask a question:
Raise hand and wait to be called on

QUESTIONS & COMMENTS

The screenshot shows the top navigation bar of the Boston Public Library website with links for Hours & Locations, Help, and Log In / My BPL. Below is the search bar with the text "Search the Catalog by Keyword" and an "Advanced Search" link. A red navigation bar contains links for About, Visit, Books & More, Services, Learning & Research, Events, Support the BPL, and Work at the BPL. The main content area is titled "South End Branch Project" and has two buttons: "Hours & Location" and "About the South End Branch". Below this is the "Branch Improvement Feedback" section, which includes a short message: "We look forward to your feedback and will be glad to answer any questions you may have. '*' indicates required fields". The form fields are: "Name" (split into "First" and "Last" text boxes), "Email" (a single text box), and "Feedback *" (a large text area). A red arrow points to the "Feedback" text area.

Written comments or questions can also be directed to:
Priscilla Foley
Director of Neighborhood Services
617-859-2233
pfoley@bpl.org

Feedback can be issued through the project page:

<https://www.bpl.org/south-end-project/>



THANK YOU!

