



# CHINATOWN BRANCH LIBRARY

Community Meeting #1

December 2, 2024



Mayor Michelle Wu



utile



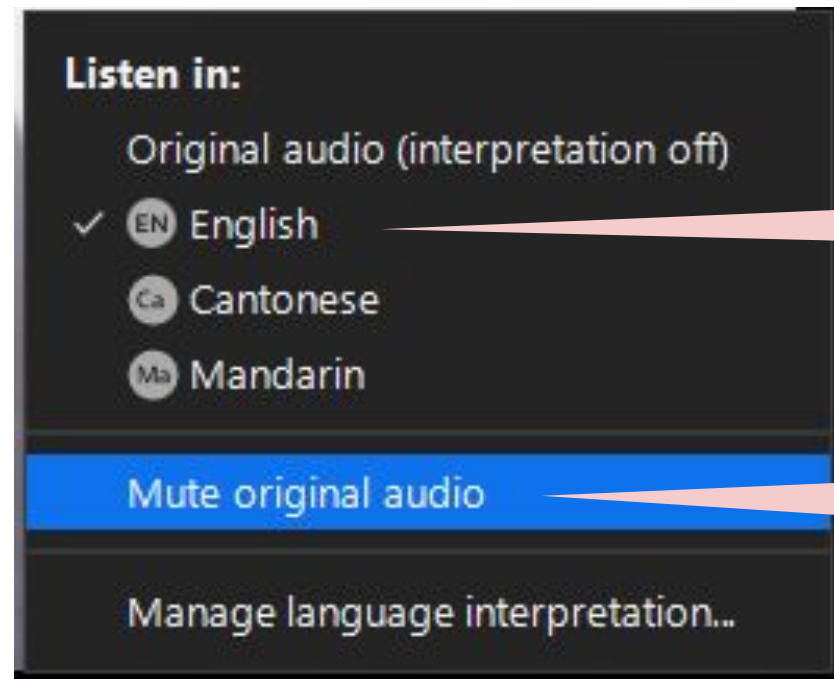
City of Boston  
Public Facilities

# TRANSLATIONS

---

Translations for this meeting are available live in the following languages:

- Chinese (Cantonese)
- Chinese (Mandarin)



Select the language you would like to hear the presentation in

Select mute original audio to only hear your selected language channel

# AGENDA

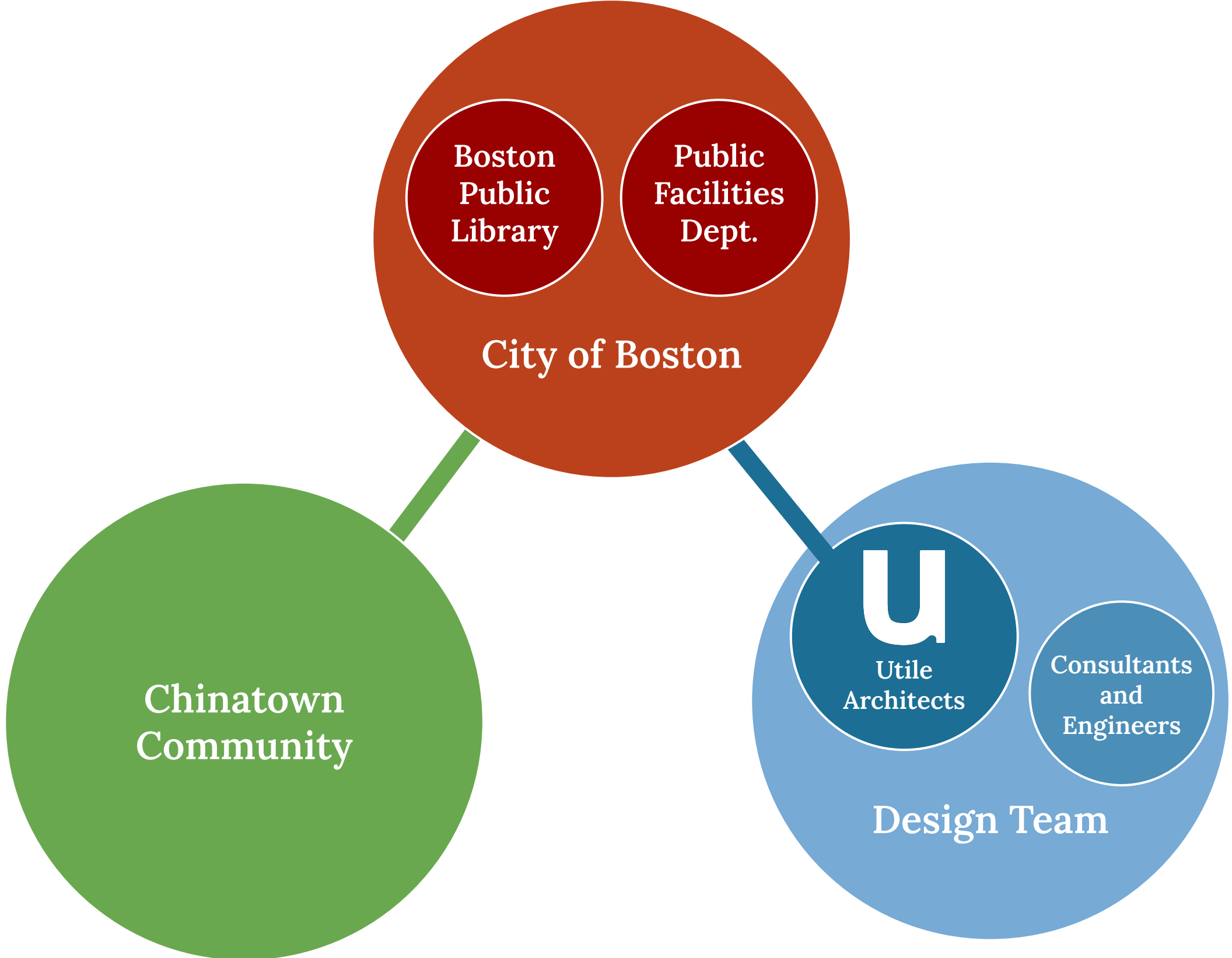
---

Community Meeting #1  
December 2, 2024

1. Introductions
2. Schedule and Process
3. A Brief History of the Branch & Branch Location
4. Building Program
5. Preliminary Layout
6. Next Steps
7. Q&A Discussion

# PROJECT TEAM

---



---

# SCHEDULE & PROCESS



# PROJECT PROCESS



# CHINATOWN BRANCH LIBRARY SERVICES STUDY

---

*Excerpt from BPL & Miller Dyer Spears 12/29/2017 Final Report*

- **Reflect & reinforce Chinatown culture**
  - Reflect and help preserve Chinese language, culture, and identity.
  - Build a significant Chinese language collection that will be based in this branch and available to the entire city.
  - Accommodate presentation of Chinese culture such as music, reading by Chinese authors, and art exhibits.
- **Provide a multigenerational gathering space**
  - Community members feel that one of the most important functions of a Chinatown branch library is as a community gathering space.
  - Provide informal hang-out space, multi-purpose meeting/conference space for larger gatherings, small conference rooms, small group study rooms, and outdoor space.
- **Provide services to support community needs**
  - Provide space for educational programs, youth and family programs, and technology resources.

# CHINATOWN BRANCH LIBRARY SERVICES STUDY

*Excerpt from BPL & Miller Dyer Spears 12/29/2017 Final Report*

## PROGRAM SUMMARY

PROGRAM SPACE TYPE	NSF	%
ENTRANCE / LOBBY	1,000	7.8%
ADULT SECTION	3,400	26.6%
TEEN SECTION	1,300	10.0%
CHILDREN'S SECTION	2,300	18.0%
SHARED PUBLIC SPACE	2,300	18.0%
STAFF AREAS	1,100	8.6%
BUILDING SERVICES	1,400	11.0%
<b>TOTAL NET SF</b>	<b>12,800</b>	
NET-TO-GROSS FACTOR	1.2	
<b>TOTAL GROSS SF</b>	<b>15,360</b>	

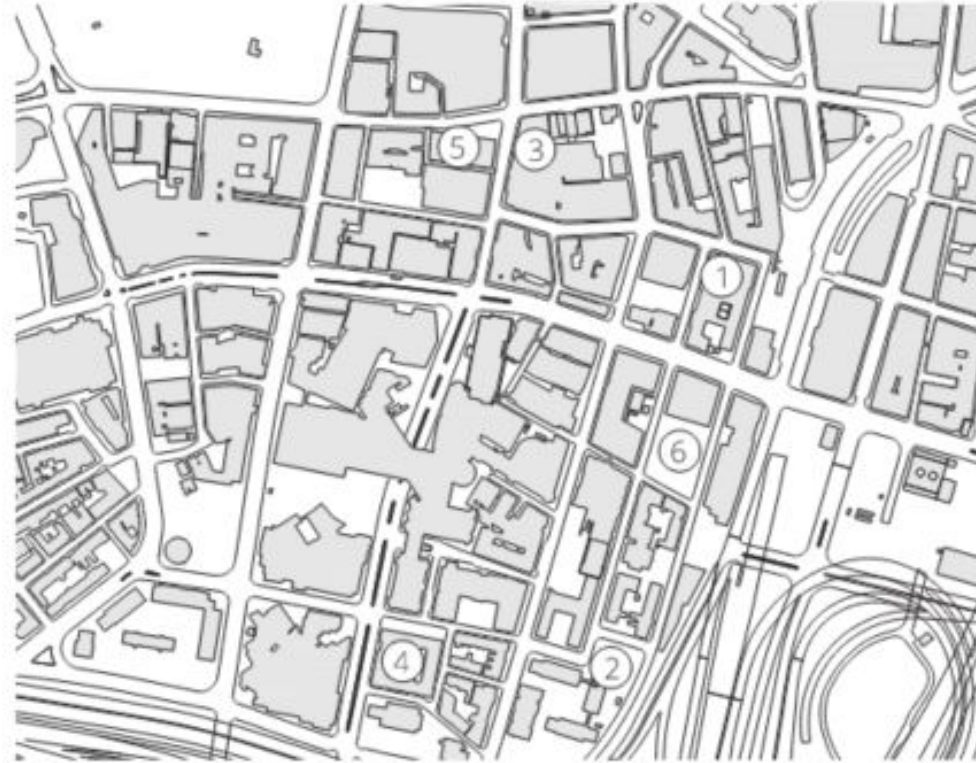


---

# A BRIEF HISTORY OF THE BRANCH & BRANCH LOCATION



# HISTORY OF THE CHINATOWN BRANCH



KEY MAP | CHINATOWN LIBRARY LOCATIONS

**2001**  
The Chinese Youth Initiative (CYI) & the Friends of Chinatown Library (FOCL) form and begin campaigning for a Chinatown Branch Library

**2006**  
City of Boston completes the first feasibility study for a Chinatown Branch library.



**2009**  
**Chinatown Storefront Library**  
A community-led grassroots initiative, the storefront library is open in an empty commercial storefront at 640 Washington St.



**2012-2013**  
**Chinatown Lantern Reading Room**  
A community-run reading room is open for 1 year at the Oak Terrace apartments



**2018-present**  
**Temporary Chinatown Library**  
BPL opens the Temporary Chinatown Branch Library in the China Trade Center Building

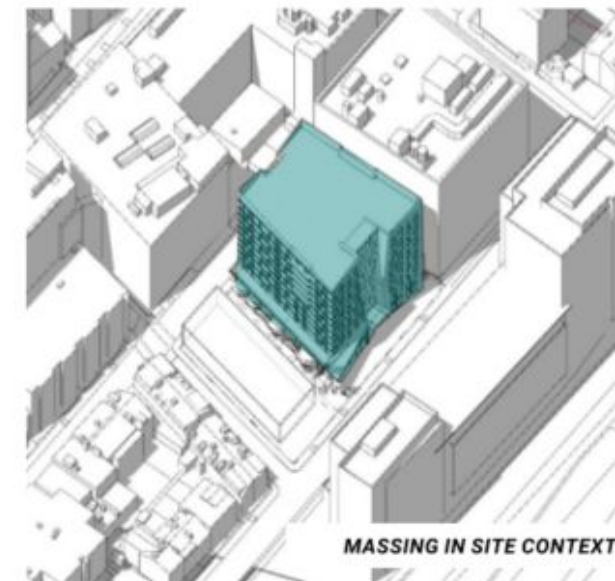
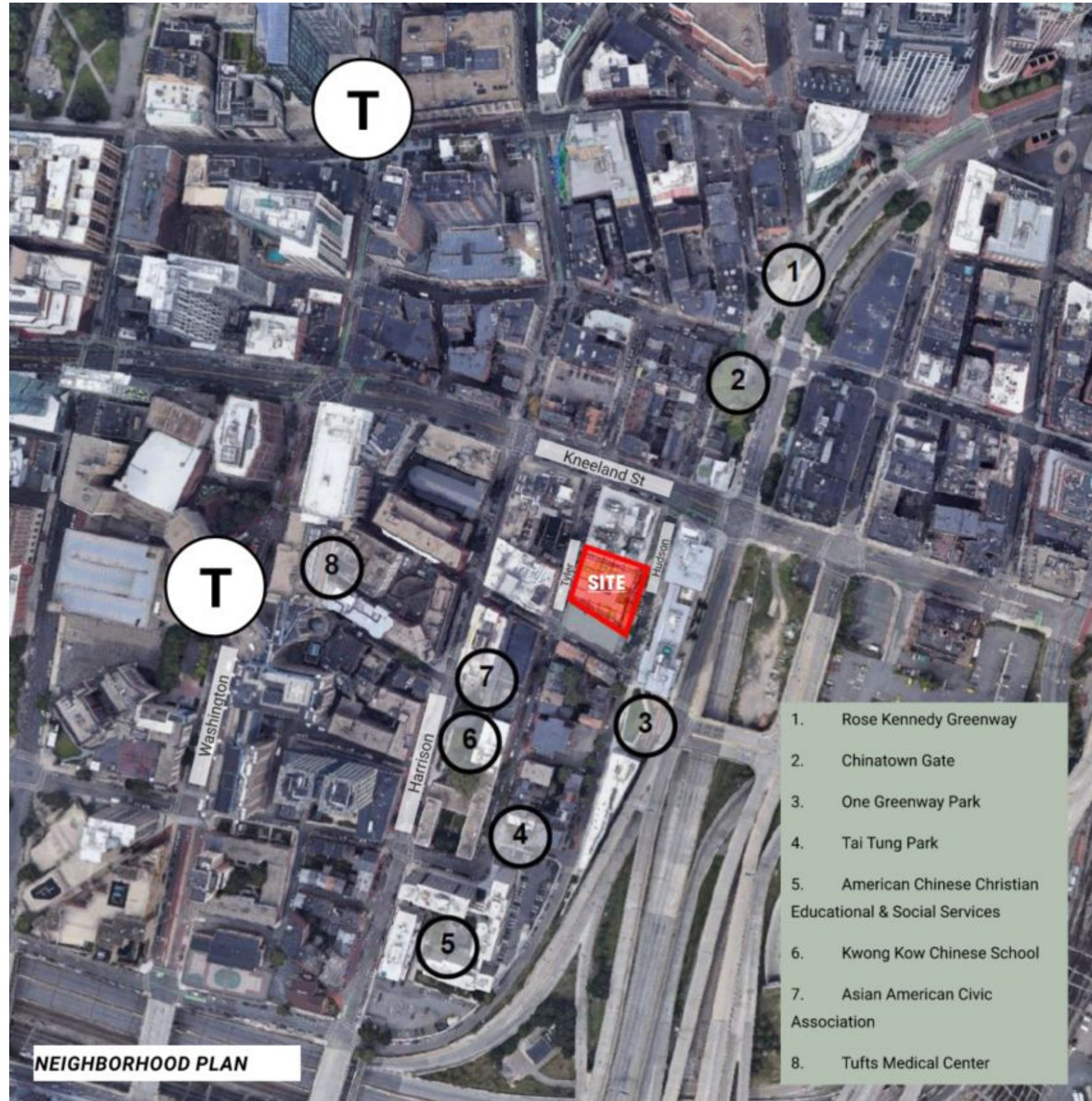
**2016**  
City of Boston completes the second feasibility study for a Chinatown Branch (see Appendix A)

**2019-present**  
BPL works with BPDA to locate a library in a new mixed-use building at Parcel R-1



# BRANCH LOCATION

Asian Community Development Corporation Parcel R-1 Design Submission October 28, 2021

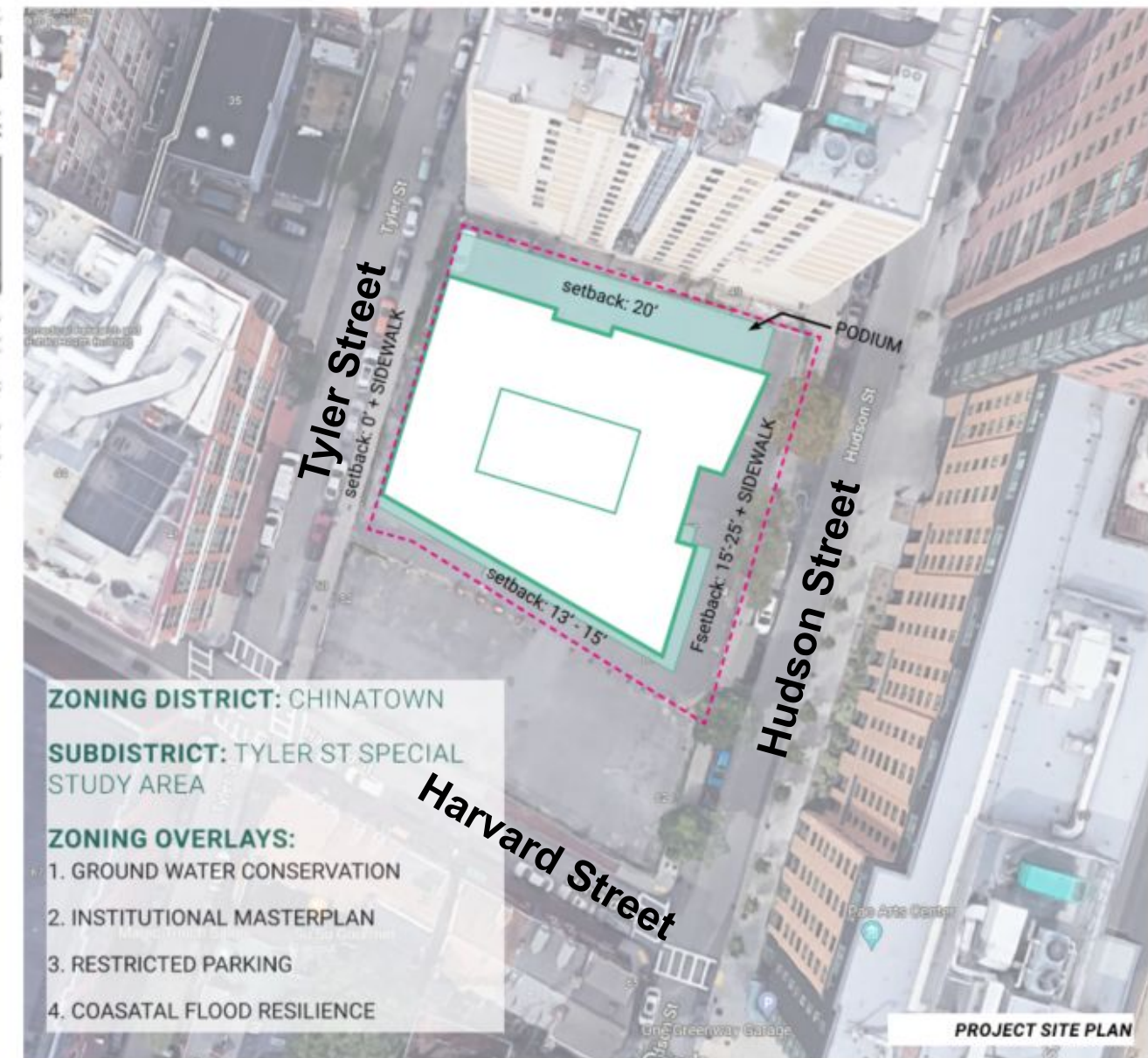


**ZONING REQUIREMENT**

MAX FAR: 8  
MAX BUILDING HEIGHT: 125'

**PROJECT DIMENSIONS**

FAR: 7.8  
BUILDING HEIGHT: 148' + ROOF MEP



**ZONING DISTRICT:** CHINATOWN

**SUBDISTRICT:** TYLER ST SPECIAL STUDY AREA

**ZONING OVERLAYS:**

1. GROUND WATER CONSERVATION
2. INSTITUTIONAL MASTERPLAN
3. RESTRICTED PARKING
4. COASATAL FLOOD RESILIENCE

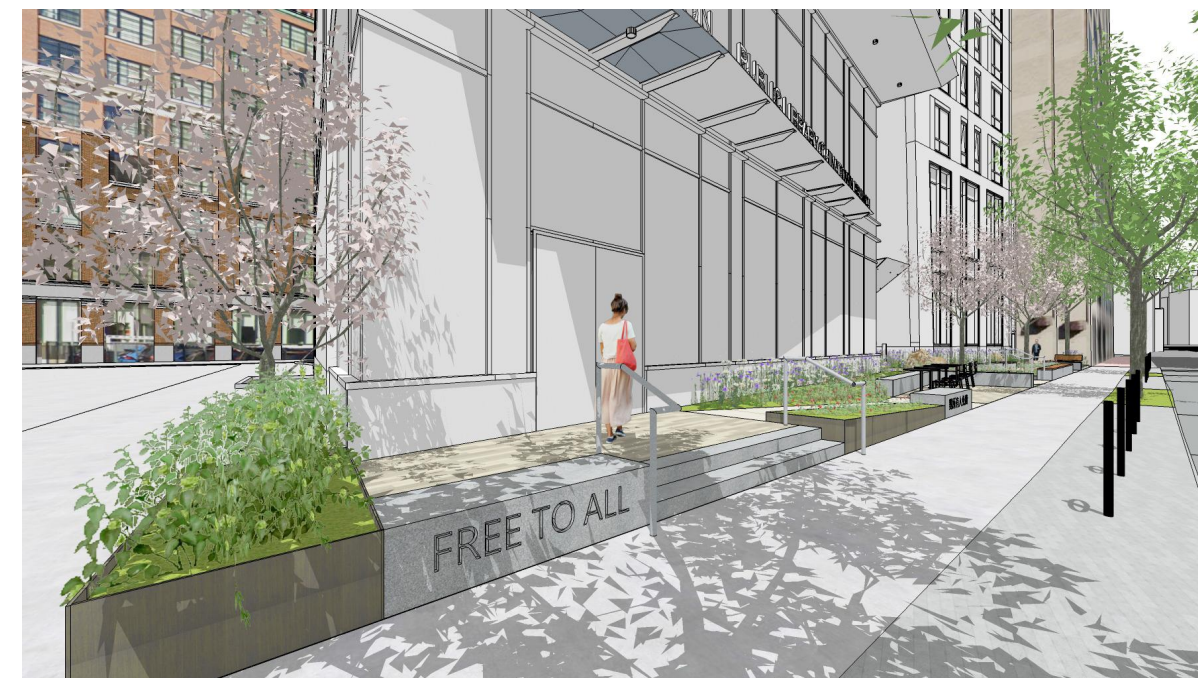
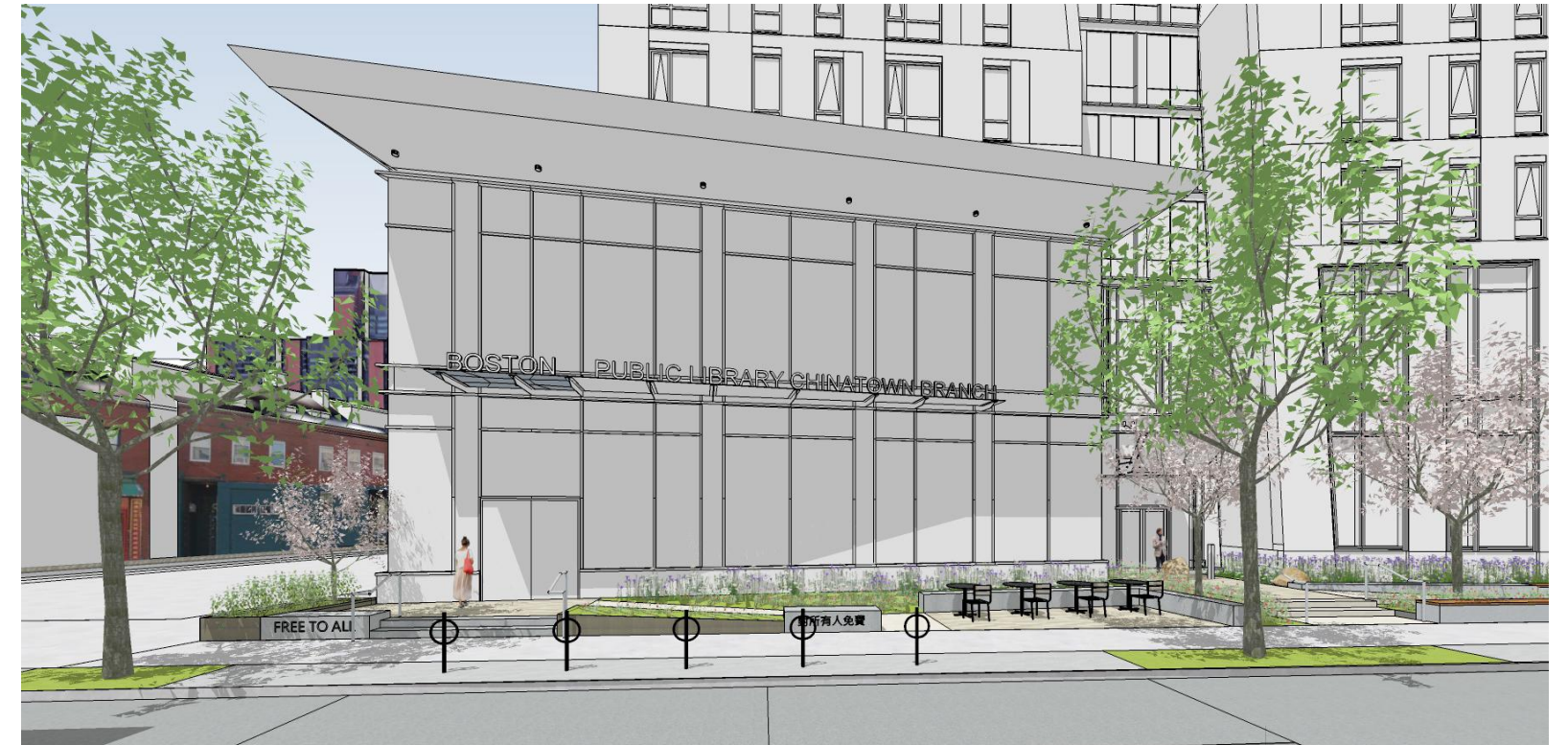
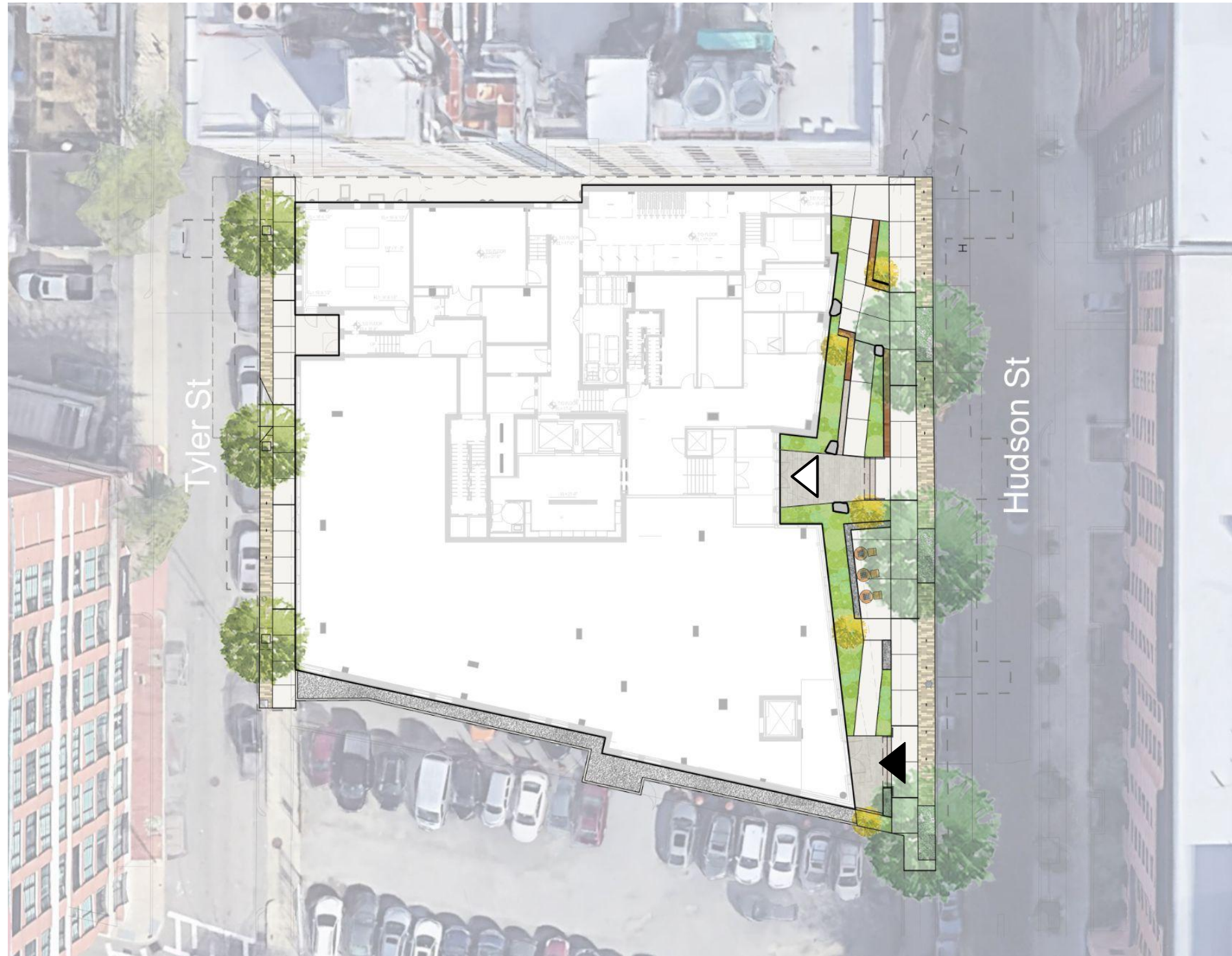
# BRANCH LOCATION

*Asian Community Development Corporation Parcel R-1 Design*



# BRANCH LOCATION

Asian Community Development Corporation Parcel R-1 Design



- ◁ Residential Entrance
- ◀ Library Entrance

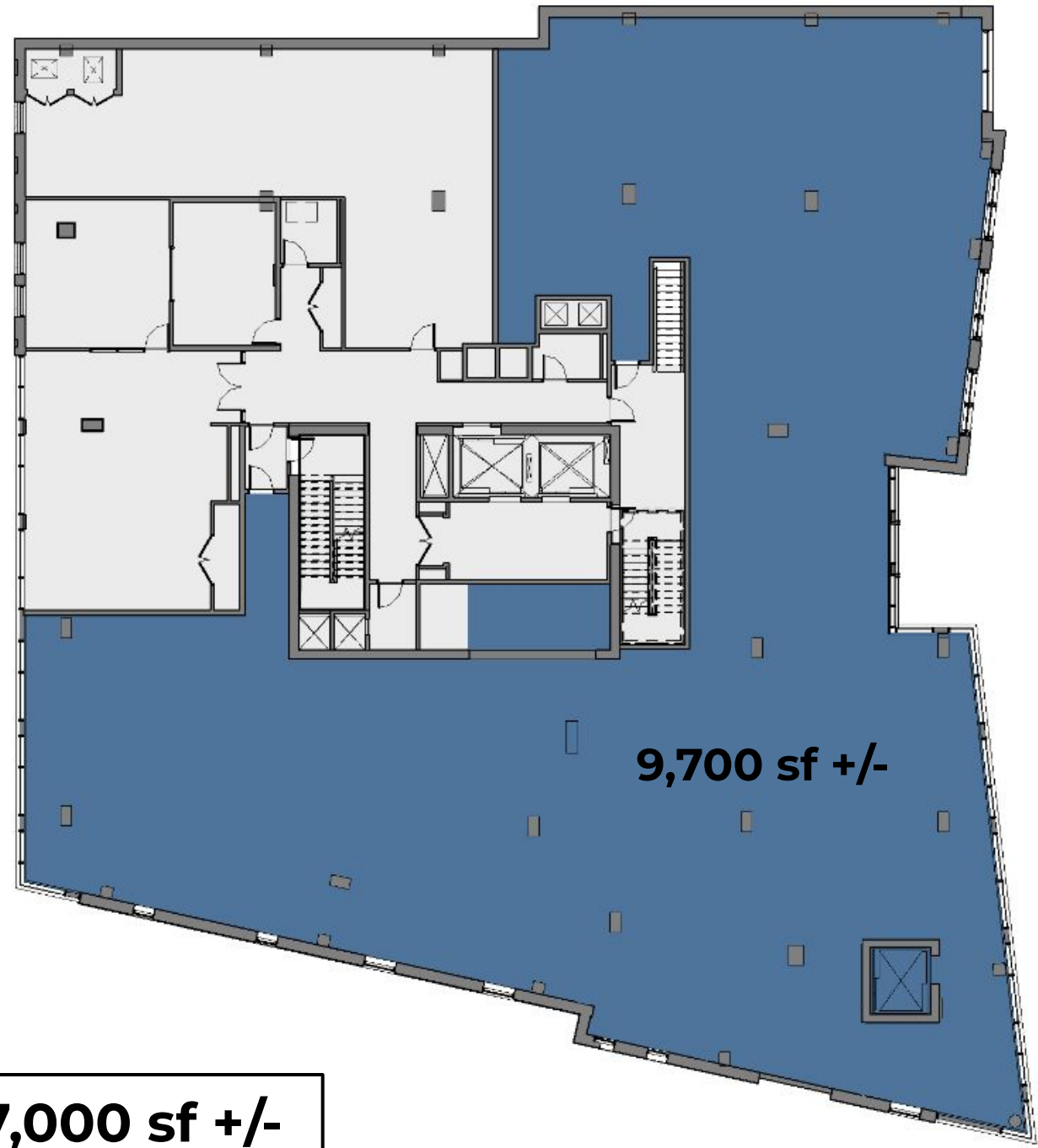
# BRANCH LOCATION

Asian Community Development Corporation Parcel R-1 Design

Ground Floor



Second Floor



**Total: 17,000 sf +/-**



utile



City of Boston  
Public Facilities

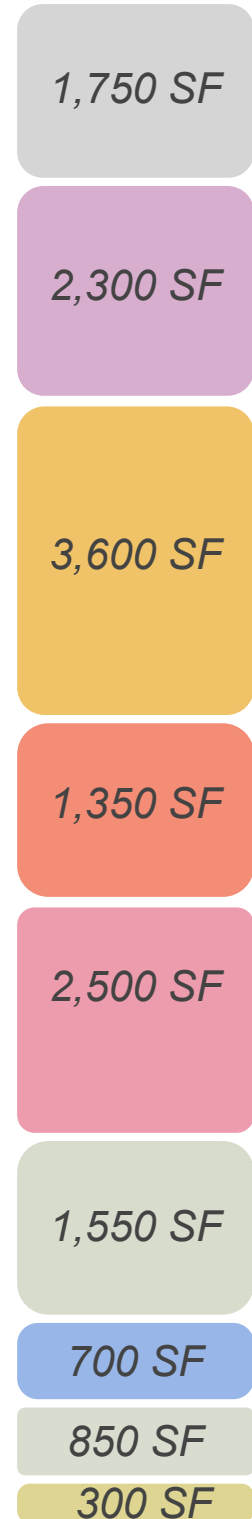
---

# BUILDING PROGRAM



# PROPOSED CHINATOWN BRANCH BUILDING PROGRAM

16,350 SF (+15%)



Proposed

## Community - 2,300 SF

- Community Meeting Room, seating capacity of +/- 100
- Classroom, seating capacity of +/- 18
- Multi-purpose meeting room, 8-10 seats
- Study room, 4-6 seats

## Adult Area - 3,600 SF

- 12,500 - 13,000 volumes
- 44 seats (66% increase)
- 8 computer stations
- Includes Local History

## Teen Area - 1,350 SF

- 3,000 volumes
- 30 seats (400% increase)
- 6 computer stations

## Children Area - 2,500 SF

- 13,250 - 13,750 volumes
- 32 seats
- 8 AWE computer stations
- Includes tweens area, story time area and crafts

## Multi-Generational Space - 1,550 SF

- Library Commons

## Staff - 700 SF

- Work room, break room, staff restroom and storage
- Branch librarian's office

## Central Services - 850 SF

- Borrower's desk
- Holds shelving, Friend's book sale, community bulletin board and display areas
- Restrooms

## Entry - 300 SF

- Vestibule, lobby and book drop

## Support - 1,750 SF

- Friend's storage
- Facilities storage
- Mechanical and electrical rooms

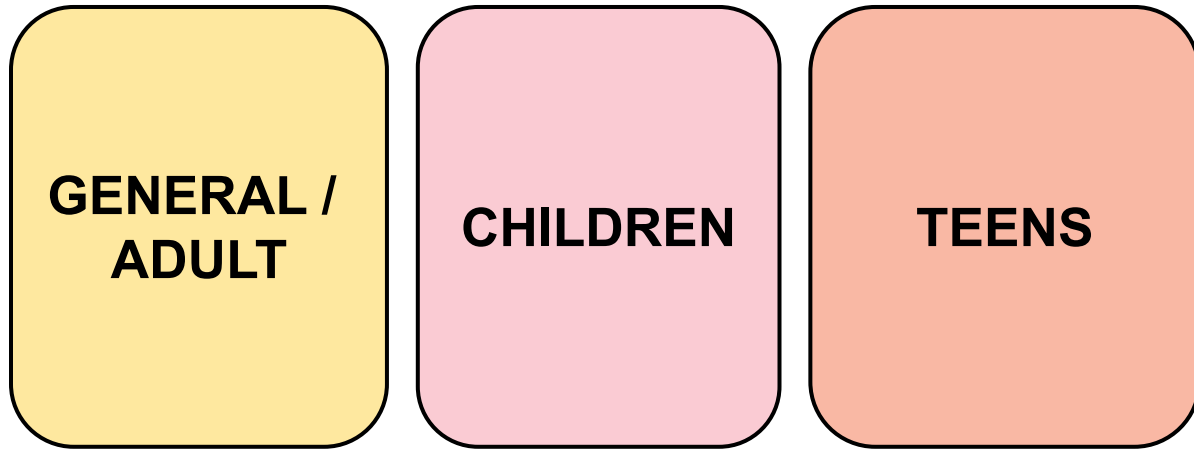
## Other - 2,100 SF

- Corridors between program areas and HVAC shaft spaces

**TOTAL - 17,000 SF**



# CORE BRANCH LIBRARY BUILDING PROGRAM



## Collections & Seating



# CORE BRANCH LIBRARY BUILDING PROGRAM

**COMMUNITY ROOM**

100 SEATS

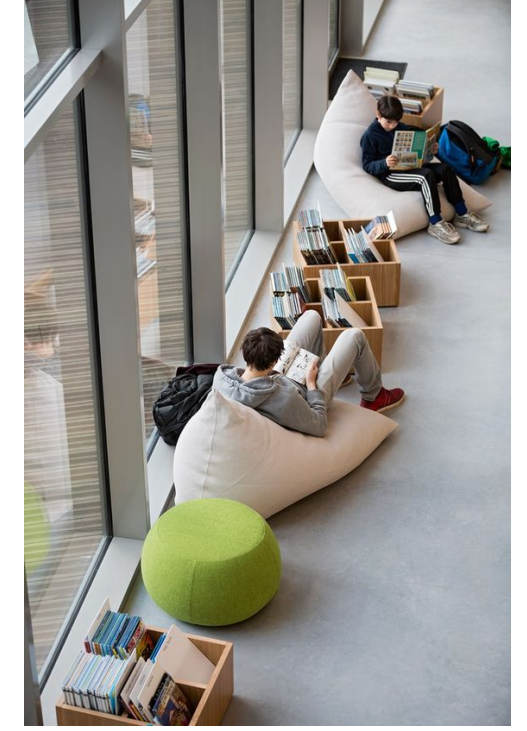
**CLASSROOM**

18 SEATS

**STUDY ROOMS**

(1) FOUR PERSON ROOM

## Meeting and Study Spaces



# CORE BRANCH LIBRARY BUILDING PROGRAM

MULTI-GENERATIONAL  
GATHERING SPACE

Space Unique to the Branch



WE WANT TO  
HEAR YOUR  
THOUGHTS!



Mary Soo Hoo Park - Play Games

Photo Credit: Jonathan Levitt, Ngoc Doan, STIMSON



Learning Commons - American School of Madrid



Pao Art Center - Display

Photo Credit: Mel Taing

# CORE BRANCH LIBRARY BUILDING PROGRAM

Outdoor Spaces



Locations for Art



# PROPOSED CHINATOWN BRANCH COLLECTIONS

---

Adult Chinese and World Language Collection	8,250 volumes, 14% increase
Adult English Collection	4,678 volumes, 33% increase
Children’s Chinese and World Language Collection	8,480 volumes, 7% increase
Children’s English Collection	7,870 volumes, 27% increase
Teen Chinese and World language Collection	320 volumes
Teen English Collection	1,280 volumes, 27% increase
AV	825 items, 71% increase
New and Display	640 volumes
<b>Total Collection</b>	<b>32,000 volumes, 23% increase</b>



utile



City of Boston  
Public Facilities

---

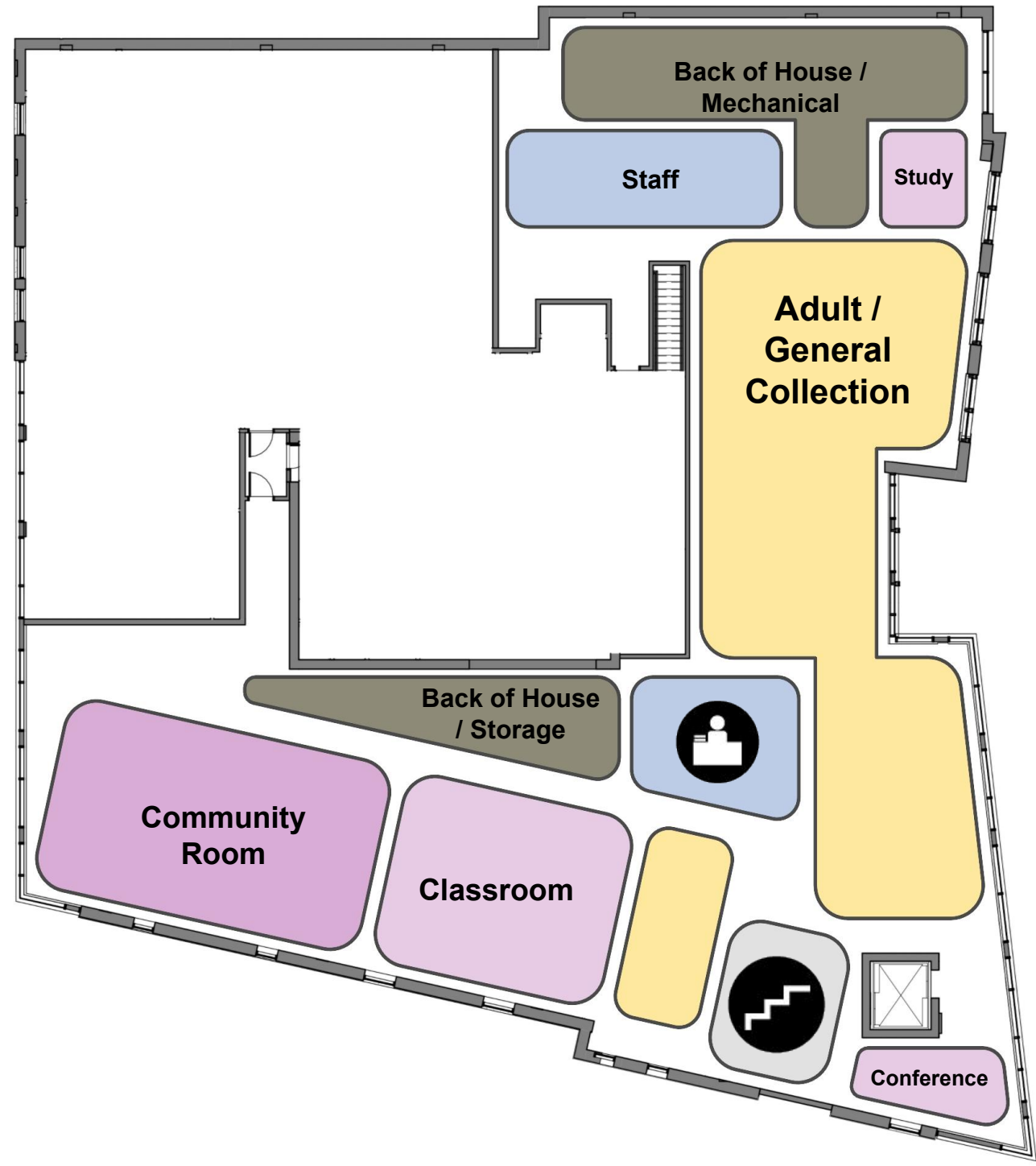
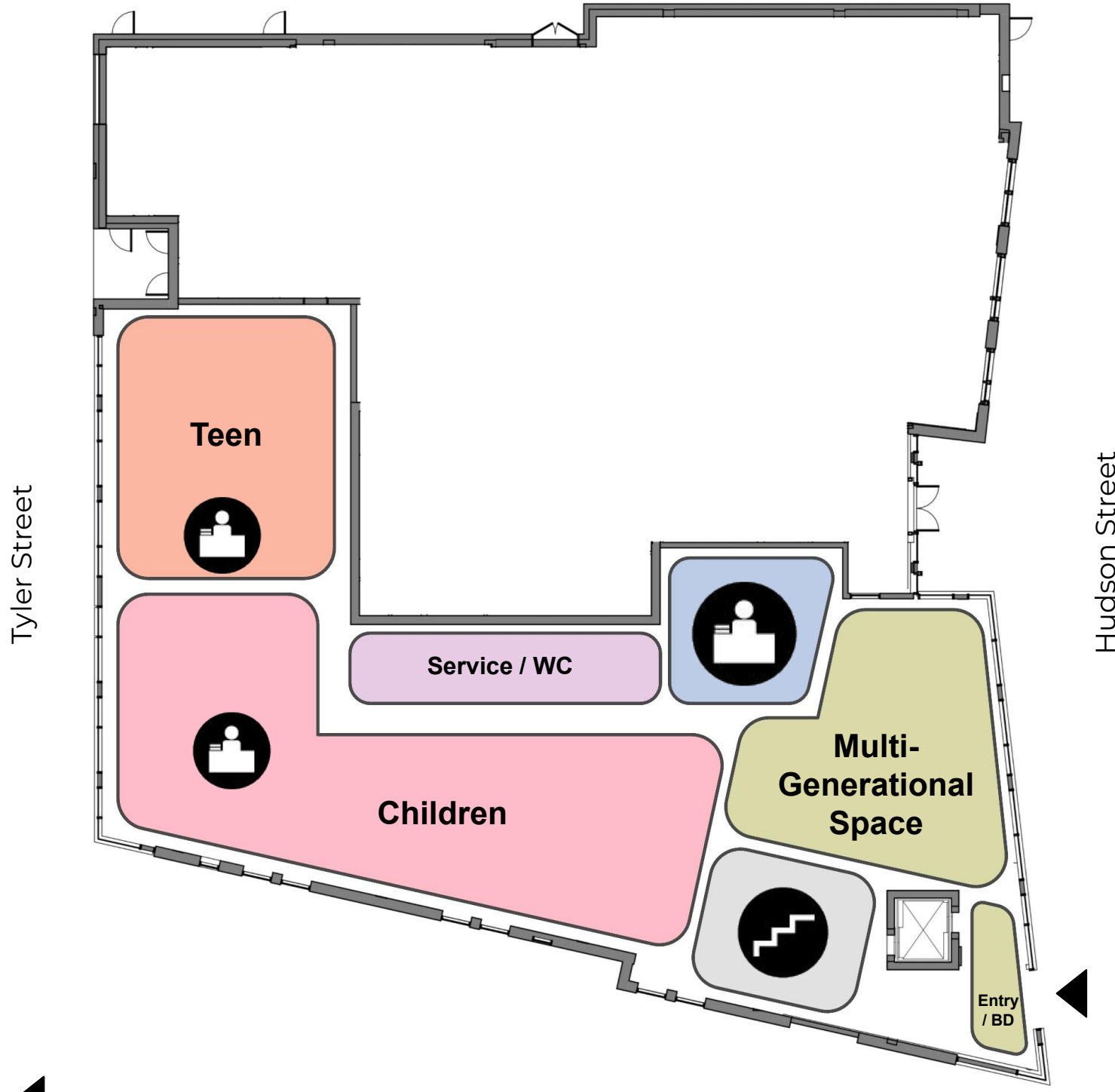
# PRELIMINARY LAYOUT



# PRELIMINARY LAYOUT OF LIBRARY PROGRAM

Ground Floor

Second Floor



---

# NEXT STEPS





# COMMUNITY INPUT

We are here



Community Meeting #1  
Dec 2, 2024  
Branch location and space allocation  
  
Present BPL Branch Library building program  
  
Understand community needs for Chinatown Branch

Future Community Meeting  
  
TBD in 2025

---

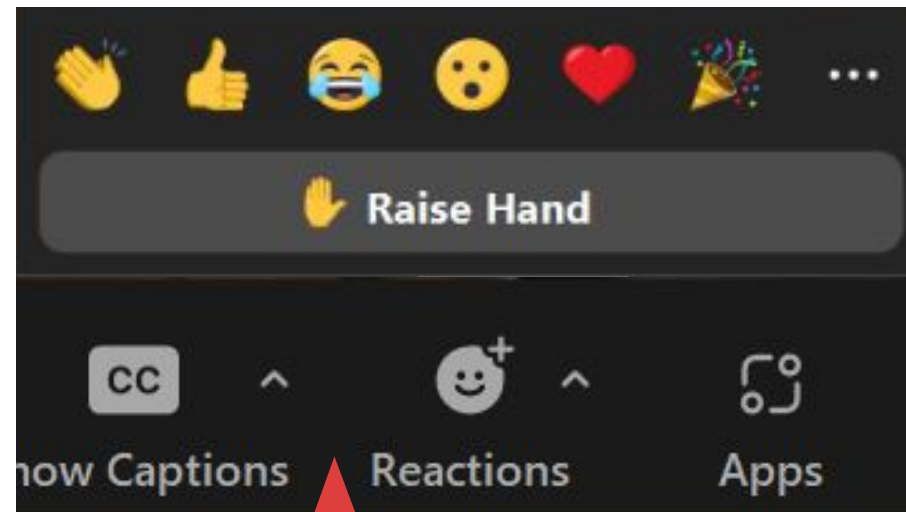
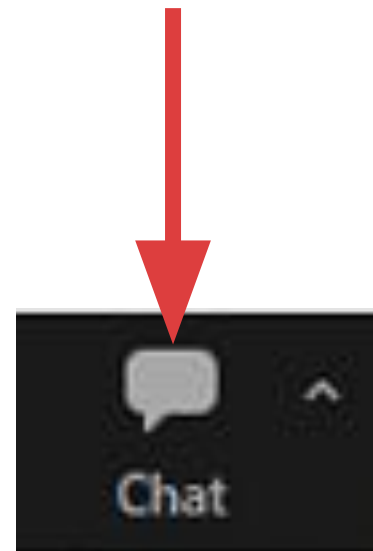
# QUESTIONS & COMMENTS?



# QUESTIONS & COMMENTS

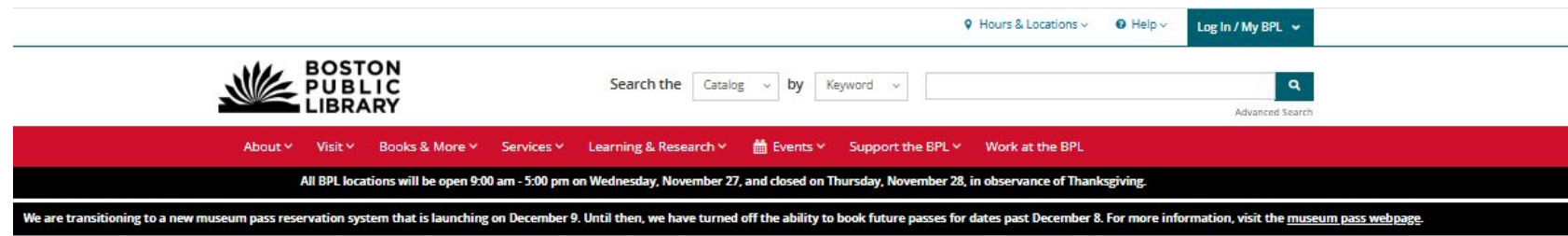
---

For written comments or questions:  
Use the chat dialog box



To ask a question:  
Raise hand and wait to be called on

# QUESTIONS & COMMENTS



## Chinatown Branch Project

[Hours & Location](#) [About the Chinatown Branch](#)

In FY20 review of viable sites will continue for a permanent location for library services in Chinatown. This site review will utilize information from the 2017 Chinatown Library Services Planning Study and feedback from the temporary library space.

The temporary Chinatown Branch opened in February 2018, fulfilling a long-term community goal to restore library services to the neighborhood. The branch provides a community gathering space, a place to study and learn, and access to computers and the internet.

### Project History

- [Chinatown Library Services Final Report 12-29-17 \(PDF\)](#)
- [2017-10-24 Final Community Meeting \(PDF\)](#)
- [2017-07-18 Final \(PDF\)](#)
- [2017-04-25 1st Community Meeting Presentation \(PDF\)](#)

### Chinatown Branch Improvement Feedback.

We look forward to your feedback on our projects and will be glad to answer any questions you may have.


\* indicates required fields

Name

First  Last

Email

Feedback \*



Feedback can be issued through the project page:

<https://www.bpl.org/chinatown-project/>

Written comments or questions can also be directed to:

**Priscilla Foley**

Director of Neighborhood Services

617-859-2233

[pfoley@bpl.org](mailto:pfoley@bpl.org)



---

# THANK YOU!

